

Brigade Northridge - Yelahanka, Bangalore



Offer all the comforts and facilities.

Brigade Northridge by Brigade Group in Yelahanka, Bangalore is a residential project that offers spacious 2 bhk and 3bhk apartments with the size ranges from 1230 sq. Ft to 1880 sq. Ft.

- Project ID: J119019181
- Builder: Brigade Group
- Location: Brigade Northridge, Yelahanka, Bangalore - 560064 (Karnataka)
- Completion Date: Sep, 2020
- Status: Started

Description

Brigade Northridge in Yelahanka, Bangalore North by Brigade Group is a residential project. The project offers 2 bhk and 3 bhk apartment with the size ranges from 1230 sq. Ft to 1880 sq. Ft. perfect combination of contemporary architecture and features to provide comfortable living. The project has all the amenities like swimming pool, club house, gymnasium etc. The project enjoys close proximity to various key areas. Many schools and hospitals can be accessed with in the range of 4km to 12km.

Amenities :

- Landscaped gardens
- Table tennis
- Billiards
- Swimming pool
- Gymnasium
- Jogging track
- Meditation hall
- Yoga room
- Play area
- Tennis court
- Badminton court
- Skating rink
- Club house
- Senior citizen park
- Security

Established in 1986 by Mr. M.R. Jaishankar, **Brigade Group** is a leading real estate developer in South India. It boasts of a distinctive portfolio that includes property development, property management services, hospitality, and education. Headquartered in Bangalore, it has established a strong foothold in several cities in South India with its exemplary apartments and villas. It is one such realty brand that also enjoys a reputation for developing Grade A commercial properties. Known to be a professionally managed organization, it is committed to delivering excellent customer service.

Features

Luxury Features

- Power Back-up ■ Lifts ■ High Speed Internet

Lot Features

- Balcony ■ Park Facing

Interior Features

- Woodwork

Recreation

- Swimming Pool ■ Park ■ Fitness Centre / GYM
- Club / Community Center

General

- Power Back-up ■ Lifts

Security Features

- Security Guards ■ Intercom Facility ■ Fire Alarm

Lot

- Basement

Exterior Features

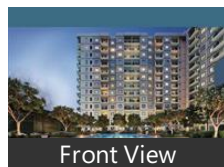
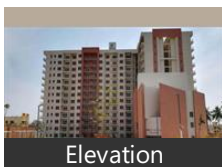
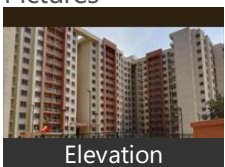
- Reserved Parking

Maintenance

- Maintenance Staff ■ Water Supply / Storage
- Boring / Tube-well ■ Rain Water Harvesting
- Waste Disposal ■ Water Softner

Gallery

Pictures



Floor Plans



Master Plan



Location Map



Floor Plan A



Floor Plan B



Floor Plan C

Location

Landmarks

Public Transport

Yelahanka Railway Station (<6km), Hebbal (<11km), Jakkur Aerodrome (<7km), Hebbal Railway Station (<12km), Nagavara (<10km), Bmtc Kalyannagar Bus Station (<12k... Nagashettyhalli B M T C Bus Station ... Vishwanath Nagenahalli-EB (<11km), Kodigehalli Railway Station (<11km), Yelahanka B M T C Bus Station (<6km. B M T C Bus Station-Yelahanka N E S...

Hotel

Royal Orchid Resort & Convention C... Chairman, The Royale Senate-Hebbal (<12km), Ramanashree California Resort-Dodd.. Godrej Woodsman Estate (<10km), Roseline Suites (<13km), Liwa Hotel (<7km), Howard Johnson-Nagavara (<9km), Maple Inn-Kempapura (<9km), Arra Suites (<9km), Country Inn & Suites By Radisson Be... Howard Johnson by Wyndham Beng...

Recreation

Manyata Embassy Business Park (<7k.. Lumbini Gardens (<10km), Decathlon Sports India (<10km), PVR Cinemas-MSR Elements Mall (<... Hennur Banaswadi Cosmopolitan Cl... Pushpanjali-Sultanpalya (<13km), Naatyakalakshetra Academy for Fine...

Building

Orchid Woods (<6km), Sobha Chrysanthemum (<6km), Krishna Northwoods (<4km), Karle Town Centre (<9km), SLS Symphony (<8km), Kemp Fort (<12km), Sobha City ■■■■■ (<4km), Vivek Marvel (<4km), Adithya Celestial (<5km), R & S Riviera (<7km), R and S Riviera Bangalore (<7km), Supertech Micasa (<2km), Railway Wheel Factory West Colony ... Crystal Enclave (<11km), Nagarjuna Meadows Phase-1 (<8km), Vamshi Residency (<9km), Eco Narasimha (<12km), Kalathoor House (<4km), Oceanus Greendale (<14km), Kendriya Vihar (<5km), Sobha Petunia (<10km), VDB Celadon (<5km), DS Max Spring Dale (<10km), Manito Shelters (<13km), Sobha Emerald-2 (<5km), Hoppers Stop (<6km), SLS Spencer (<12km), Bornmann Enclave (<7km)

Shopping Centre

MSR Regaliaa Elements Mall (<9km), Esteem Mall (<10km)

Business & Services

Kirloskar Business Park (<10km), Rail Wheel Factory-Main Gate (<8km.. Bharat Electronics-Main Gate ■■■|...

ATM/Bank/Exchange

City Union Bank-Yelahanka New Tow. State Bank of India (<8km), Canara Bank (<9km), Bank of Baroda-Defence Colony (<9k.. Uco Bank (<10km), South Indian Bank (<12km), State Bank of India-R A C P C Banasa... Karnataka Bank-Banaswadi (<13km), State Bank of India-Yelahanka-Gandh.

Restaurant & Shops

Reliance Fresh (<8km), Five Star Chicken (<4km), Lulu Value Mart (<7km), Patels Inn (<14km), Basaveshwar Bharat Gas Agency-Bha.. Pawan Textiles (<11km), Korea (<11km)

Hospitals & Clinics

Columbia Asia Hospital-ER (<10km), Yelhanka Govt Hospital (<5km), Dr Ambedkar Medical College Hosp ...

DR. Agarwal, Specialist Hospital (<13km), Orthopaedic Clinic (<14km), Sham, cloudnine clinic (<9km), Dr B R Ambedkar Medical & Hospita... Dr Lal PathLabs (<9km), Banaswadi Hospital (<13km), Manipal Ankur (<10km), Shushrusha Nursing Home (<5km), I Aim Healthcare Center (<13km), Chaitanya Hospital (<13km), Government Public Hospital (<5km), Sankalpa E N T Care Centre (<6km)

Accommodation

Club Cabana (<10km)

Educational Facility

Vidyashilp Academy (<6km)

Hostel

Bmsit Boys Hostel (<11km)

* All distances are approximate

Properties

Brigade Northridge News

Expert Reviews on Brigade Northridge

Explore

[Projects in Bangalore](#)

[Brokers in Bangalore](#)

More Information

Report a problem with this listing

Is any information on this page outdated or incorrect?

[Report it!](#)

Disclaimer: All information is provided by advertisers, including builders/agents/owners, or collected from publicly available sources and may not be verified under RERA. Any information provided on this website, including facts and figures, should be verified independently, including via the relevant RERA website, before entering into any transaction. PropertyWala.com is only an advertising platform to help connect buyers and sellers and is not a party to any transaction, nor shall be responsible or liable to resolve any disputes between them.

[Home](#) » [Bangalore Real Estate](#) » [Projects in Bangalore](#) » [Brigade Northridge - Yelahanka, Bangalore](#)