

1 Bedroom Apartment / Flat for sale in Naupada, Thane

60 lakhs



1Rk For Sale @ Naupada, Thane

M G Road, Bhaskar Colony, Naupada, Naupada, Thane - ...

- Area: 325 SqFeet ▾
- Bedrooms: One
- Bathrooms: One
- Floor: First
- Total Floors: Seven
- Facing: West
- Furnished: Unfurnished
- Transaction: Resale Property
- Price: 6,000,000
- Rate: 18,462 per SqFeet
- Age Of Construction: 2 Years
- Possession: Immediate/Ready to move

Advertiser Details



Rajesh Gadgil
Property Management
Kasarvadavali, Thane

Mob: 9821120390

tel:

mail: manishapropertiee@gmail.com



www.propertywala.com/manisha-properties-pune

Scan QR code to get the contact info on your mobile

[View all properties by Manisha Properties](#)

Description

Introducing a stunning 1 RK apartment in the heart of Naupada, Thane.

This unfurnished apartment is located in the desirable Ekdant Anmol Oasis project, presenting an ideal opportunity for homebuyers on a lookout for a cozy yet affordable living space. Sprawling across 325 square feet, this apartment offers ample space to craft a comfortable and convenient lifestyle.

The well-designed layout includes one spacious bedroom and two modern bathrooms.

Whether you're a single professional or a small family, this apartment accommodates your needs with ease. The first-floor unit is strategically positioned to treat you to a picturesque view of the road.

As you soak in the scenery, you can enjoy the invigorating natural light and refreshing breeze every day.

The apartment features a balcony, providing the perfect spot to unwind after a long day or enjoy a cup of tea while admiring the surroundings. For absolute peace of mind, the property is equipped with amenities such as 24x7 security and CCTV surveillance, ensuring the safety and well-being of residents.

The compound also features security staff, creating an added layer of security and convenience. Situated on the road, this apartment enjoys excellent connectivity to all parts of Thane.

With easy access to various transportation options and major landmarks, commuting becomes a breeze.

Additionally, the locality is well-served by essential amenities such as schools, hospitals, supermarkets, and entertainment centers, catering to your every need. To complete the package, this apartment includes one parking space for hassle-free parking of your vehicle. All of this can be yours for the attractive price of 60 Lac.

Don't miss the chance to own this fantastic 1 RK apartment in the coveted Naupada area of Thane.

Embrace comfortable and seamless living in this modern abode.

Please mention that you saw this ad on PropertyWala.com when you call.

Location

* Location may be approximate

Landmarks

Nearby Localities

[Gokhale Road](#), [Teen Haath Naka](#), [Panchpakhadi](#), [Waghle Estate](#), [Wagle Industrial Estate](#), [JK Gram](#), [Thane Belapur Road](#), [Mulund \(West\)](#), [Vartak Nagar](#)

* All distances are approximate

Locality Reviews

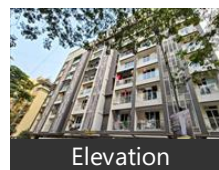
Naupada, Thane

Naupada is located close to Thane station and is the commercial heart of Thane. It is comparable to VT(CST), Fort, Opera House, Girgaum, Ballard Pier to South Bombay. It is to Thane District, Good civic services, shopping & healthcare facility. Public transport is also easily available.

Pros:

- Close to THANE (W) station

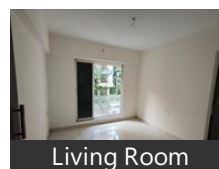
Pictures



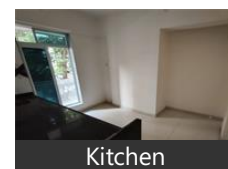
Elevation



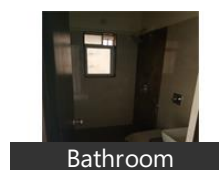
Living Room



Living Room



Kitchen



Bathroom

- TMT & ST buses available
- Plenty of 2 wheeler parking

Cons:

- Limited 4 wheeler Parking

Posted: May 20, 2017 by Jayant Maheshwari

Naupada is the prime locality & heart of Thane and is located near to Thane station, 7mts walking distance from station. All facilities like schools, shops, hospital, market, malls, theater, temple, play ground, police station, transport near to it,

Pros:

- All facilities near to society.
- Near Thane station.
- Located in the heart of Thane.

Cons:

- Waiting for metro.

Posted: Mar 29, 2014 by Sanjay Manganonkar

Naupada is a Commercial business center and it is in the heart of the city.

Pros:

- It is near to the Station.
- Easy rickshaw and bus facility
- Cleanness is well maintained in Naupada.

Cons:

- No permanent parking for vehicles

Posted: Feb 22, 2014 by Hilda Dsouza

Naupada, Thane is rated 7 out of 10 based on 3 user reviews.

Disclaimer: The reviews are opinions of PropertyWala.com members, and not of PropertyWala.com.

Explore

[Similar Properties](#)

[Properties in Naupada, Thane](#)

[Projects in Thane](#)

[Brokers in Thane](#)

More Information

Report a problem with this listing

Is this property no longer available or has incorrect information?

[Report it!](#)

Disclaimer: All information is provided by advertisers and should be verified independently before entering into any transaction. You may visit the relevant RERA website of your state to verify the details of this property. PropertyWala.com is only an advertising platform to help connect buyers and sellers and is not a party to any transactions, nor shall be responsible or liable to resolve any disputes between them.