

## 2 Bedroom Apartment / Flat for sale in VTP Pegasus, Kharadi, Pune

66.05 lakhs



### 2 BHK Flat For Sale In Kharadi, Pune

VTP Pegasus, Kharadi, Pune - 412207 (Maharashtra)

- Project/Society: [VTP Pegasus](#)
- Area: 749 SqFeet ▾
- Bedrooms: Two
- Bathrooms: Two
- Floor: Fifteenth
- Total Floors: More than 20
- Facing: East
- Furnished: Unfurnished
- Transaction: New Property
- Price: 6,605,000
- Rate: 8,818 per SqFeet **-20%**
- Age Of Construction: Under Construction
- Possession: Within 3 Months

### Advertiser Details

**TRESPECT**  
**TRESPECT INDIA**  
Director

Bandra Kurla Complex, Mumbai  
mob: 9999788104  
tel:  
mail:  
[propertywala.com/trespect-india-private-limited](http://propertywala.com/trespect-india-private-limited)



Scan QR code to get the contact info on your mobile  
[View all properties by TRESPECT INDIA PRIVATE LIMITED](#)

### Description

**VTP Pegasus** is a new residential project by VTP Realty located at Kharadi, Pune. This project fulfill the need of comfort and happiness by offering 2 Bhk apartments ranging between 749 sq.ft. which is spread the total area of 100 acres of land. Well equipped with modern amenities and hi-end facilities which provide luxury homes to its residents.

**RERA ID:** P52100007401

### Amenities

- Lifts
- CCTV
- Car Parking
- Power Backup
- Water Storage
- Security Personnel
- Multipurpose Hall
- 24\*7 Security
- Swimming Pool
- Gymnasium

When you contact, don't forget to mention that you found this ad on PropertyWala.com.

### Features

#### General

- Power Back-up
- Lifts
- High Speed Internet

#### Lot

- Balcony
- Park Facing

#### Exterior

- Reserved Parking
- Visitor Parking

#### Maintenance

- Maintenance Staff
- Water Supply / Storage
- RO System
- Rain Water Harvesting
- Waste Disposal

### Location

#### Security

- Security Guards
- Electronic Security
- Intercom Facility
- Fire Alarm

#### Interior

- Woodwork
- Modular Kitchen
- Granite Flooring
- Wooden Flooring
- Fly Proofing
- Feng Shui / Vaastu Compliant

#### Recreation

- Swimming Pool
- Park
- Fitness Centre / GYM
- Club / Community Center

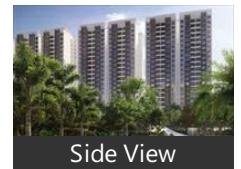
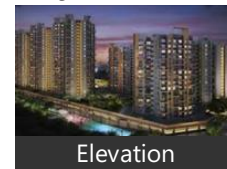
### Pictures



### Floor Plans



### Project Pictures



\* These pictures are of the project and might not represent the property

### Project Floor Plans



\* These floor plans are of the project and might not represent the property

\* Location may be approximate

## Landmarks

### Restaurant & Shops

Nalini Creation (<0.5km), The Tequila House Lounge (<0.5km), Cheers-the Space Pub (<0.5km), Sky High-the Club (<0.5km), Stellar Haat (<0.5km), Envy Designer Boutique (<0.5km), Jockey Exclusive Store (<0.5km), Firstcry (<0.5km), Food Music Love-FML (<0.5km), Medicure Drug House (<0.5km), Hreet (<0.5km), Paaji Da Dhaba (<0.5km), The Tequila House (<1km), Raj Retails (<1km), Krushnakunj (<1km), Santosh Varieties (<1km), Ratlam (<1km), Sadguru Provision Store (<1km), Bedunt Collections (<1km), Oxygen Point Nursery (<1km), Stapro Books & Stationery (<1km), Rai Retails (<1km), Bubsterrs Bar & Kitchen (<1km), Phulkari (<1km)

### Hotel

T E Comfortstays (<0.5km), Hotel Gargi Inn (<0.5km), Capital O 23720 Yogiraj Inn (<0.5km), Classic Hospitality Services (<1km), Advantage 2 U Hospitality Corporate... Pacific Corporate Solutions (<1km), The Pawar, Treebo Trend Hotel (<1km), Fabhotel Crystal Homes (<1km), The Radisson Hotel (<1km), Tab Hotel (<1km)

### Hospitals & Clinics

Sirius Clinic and Wellness Center (<0... Dr Rahul Zanjes Children, Saisha Clinic (<0.5km), Pathkind Labs (<0.5km), Nutritionist Prachis Diet Clinic (<0.5k... Dr. Ruth Fernandes Psychiatrist Clinic., Lenskart. Com (<0.5km), Apollo Diagnostics (<0.5km), Smile Avenue Dental & Multispeciali... Fitwell Physiotherapy Home Care Ser... DR.Sunita Sharmas Homoeopathy Fa.. Dr Aamleen Clinic (<1km), Best Endodontist -Root Canal Specia... Dr. Ratnika Agarwal (<1km), Cosmetic & Aesthetic Dentist Pune (... Dr. Pawars Dental Clinic (<1km), Arya Clinic (<1km), Root Canal Specialist & Family Denta.. Ayush Ayurved (<1km), Kids & Teens Primary Healthcare (<1... Suburban Diagnostics (<1km), Dr. Anjendra Targe Clinic (<1km), New Rakshak Medical Ritelar&Woles... Arihant Clinic (<1km), Arkaesthetic Skin Clinic (<1km), Thyrocare (<1km), Smile Up (<1km), Dr. Lalpath Labs-Pathology Lab Servi... Life Active Physiotherapy Clinic (<1k... [more...](#)

## Locality Reviews

Kharadi, Pune

One of the promising place to live in. With all the services, malls within 6km radius.

#### Pros:

- *Easy connectivity*

#### Cons:

- *Prices high*

Posted: Sep 2, 2020 by Topsy J

Everything is nearby.

Sophisticated atmosphere.

Hygienic.

All shopping malls,schools, hospitals, gymnasium,etc everything is nearby.

#### Pros:

- *1) Everything is Nearby.*
- *2) Sophisticated atmosphere*
- *3) Hygienic*

#### Cons:

- *NO CONS*

Posted: Aug 9, 2020 by Shubham Kaswa

Kharadi is the latest, rapidly developing IT Hub of Pune. It is centrally located in the heart of the city.

With EON IT Park, many world renowned businesses are setting up their offices in this location.

Property rates in this location are shooting up fast. It is a sought-after locality for IT brands and residential projects are selling at a rapid pace. Kharadi is the hot location for investments and growing businesses.

#### Pros:

- *Good connectivity, widest roads*
- *Malls,hospitals, multiplexes, schools in vicinity*

Posted: May 15, 2019 by Sneha Bijlani

One of the fastest growing locality of Pune. Great connectivity to airport, railway station and access to Solapur and Ahmednagar highways. Close to shopping malls and movie theaters

#### Pros:

- *Good transport connectivity*
- *Proximity to offices*
- *Close to the airport*

#### Cons:

- *Prices increasing rapidly*

Posted: Feb 11, 2019 by Prabal Deb

Kharadih is one of the fastest growing residential and commercial hubs in Pune. With IT hubs and Commercial Malls, every thing from work to fun is within minutes of reach. Several gated communities and vicinity to airport and areas like Koregaon Park, Kalyani nagar and Viman Nagar are an added advantage.

#### Pros:

- *Nearer to work places like MIDC, WTC*
- *Several Malls like Seasons Mall, Amonara Mall, Several Hospitals with emergency care units*
- *Cultural Diversity*

#### Cons:

- *The traffic at peak hours is sometimes bad*

Posted: Jun 7, 2017 by Abhijit Majumdar

World Trade Center in Kharadi - hub of business in Pune. DP road connecting EON to Wagholi and

Surrounding areas.

**Pros:**

- *IT Hub*
- *International Company Presence*
- *Well developed Infrastructure*

Posted: Jul 17, 2014 by [Jennifer A \(Gulmohar Development\)](#)

Good connectivity to EON IT park, distance is just 3.5 kms, and from Nagar road just a 200 m. Also well connected to Kharadi bypass and Magarpatta city.

**Pros:**

- *Good connectivity to Eon IT park, Kharadi bypass and also Magarpatta city*

Posted: May 4, 2013 by [Sagar sudame \(Pristine Group\)](#)

Kharadi, Pune is rated 8 out of 10 based on 7 user reviews.

Disclaimer: The reviews are opinions of PropertyWala.com members, and not of PropertyWala.com.

Explore

[Similar Properties](#)

[Properties in Kharadi, Pune](#)

[Projects in Pune](#)

[Brokers in Pune](#)

More Information

Report a problem with this listing

Is this property no longer available or has incorrect information?

[Report it!](#)

**Disclaimer:** All information is provided by advertisers and should be verified independently before entering into any transaction. You may visit the relevant RERA website of your state to verify the details of this property. PropertyWala.com is only an advertising platform to help connect buyers and sellers and is not a party to any transactions, nor shall be responsible or liable to resolve any disputes between them.