

Office Space for rent in Ramanathapuram, Coimbatore

1.3 lakh



Commercial Office Space For Rent

59 Indira Nagar, Sungam, Ramanathapuram, Coimbatore..

- Area: 2300 SqFeet ▾
- Floor: First
- Facing: East
- Lease Period: 24 Months
- Rate: 57 per SqFeet **+100%**
- Age Of Construction: 1 Years
- Available: Immediate/Ready to move
- Bathrooms: Two
- Total Floors: Two
- Furnished: Unfurnished
- Monthly Rent: 130,000

Advertiser Details

J Sankarganesh
Sales Professional

Ramanathapuram, Coimbatore
mob: 9150877424
tel:
mail:
www.propertywala.com/U43779586



Scan QR code to get the contact info on your mobile

Description

The property is located in prime location of the city which is easily accessible to Sungam Ramanathapuram and Race course.

Please mention that you saw this ad on PropertyWala.com when you call.

Features

General

- Power Back-up

Lot

- Private Terrace
- Private Garden
- Park Facing

Maintenance

- Maintenance Staff
- Water Supply / Storage
- RO System
- Water Softner
- Rain Water Harvesting
- Waste Disposal

Security

- Security Guards
- Electronic Security
- Intercom Facility
- Fire Alarm

Exterior

- Reserved Parking
- Visitor Parking

Location

* Location may be approximate

Landmarks

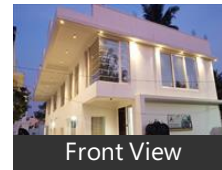
Restaurant & Shops

Bata (<0.5km), Parvathi Store (<1km), Vcoats (<1km), Teee Square (<1km), I. S. Rice Mill (<1km), Friends Decor, Yours Ladies Tailors (<1km), Emmy Fashion (<1km), Tamilnadu Ration Shop (<1km), Inbha News Paper & Book Stall (<1km C. R. Jothi (<1km), Rishika Textile Indenting Agent (<1km), Oviium Fashion Palace (<1km), J. J Collections (<1km), Elite Footwear (<1km), Aradhana (<1km), Jenny Ladies Tailors (<1km), Liberty Exclusive Showroom (<1km), Garden Fresh (<1km), Farnat Tailors (<1km), A To Z Footwear (<1km), Tasmac (<1km)

Hospitals & Clinics

Balaji Neuro Diagnostic Centre (<0.5... Vallalar Events (<1km), Manu Hospital-ER (<1km), First Physio (<1km), DR. M. Bellram (<1km), Dr. Balaji Venkateshwaran - General P.. Life Care Homeo Clinic (<1km), Karthick Polyclinic-ER (<1km), Karthick Polyclinic (<1km), The Ultimate Rehab Clinic (<1km), Primary Health Centre Ramanathapu.. Nathan Acupunchar (<1km), The Eye Foundation-ER (<1km), The Eye Foundation (<1km), Shri Krishna Child Care Center (<1km.. Spacemaker Ramanathapuram (<1km), Coimbatore Cancer Foundation-ER (... Coimbatore Cancer Foundation (<1k.. Specs Makers (<1km), Prabas Vcare Health Clinic (<1km), Indian Ayush Medical Centre (<1km), Ortho & Trauma Clinic (<1km), Sree Swamy Homeo Agencies (<1km.. Immuno Lab (<1km), Vcare Trichology Clinic (<1km), Vcare Medspa (<1km), smart Life (<1km), Asha Homoeopathic Clinic (<1km), Women, Monish Dental Clinic (<1km),

Pictures



Front View



Aerial View

Gem Physiotherapy Clinic (<1km), Premier Scans (<1km), Dentalutions (<1km), Rajkumar, Vasuma Clinic (<1km), Vamsam Fertility Centre (<1km), Sriram Scan Center (<1km), Aishwarya Clinic (<1km), DR. V. Prabhakar (<1km), Apple Dental Care (<1km), Suba Ent Clinic (<1km), Parrinam Ayurveda (<1km)

ATM/Bank/Exchange

ICICI Bank (<1km), SVC Co-Operative Bank (<1km), Karnataka Bank (<1km), WESTERN UNION Money Trans[more...](#)

Locality Reviews

Ramanathapuram, Coimbatore

Ramanathapuram is a prime place and city center of Coimbatore city. It is a mix of high commercial and high residential area. It lies on Trichy Road and it has straight connecting road to Avinashi Road. It is near by various famous temples, churches etc. A property in Ramanathapuram is always valued high and it is a best buy. Not only for investment but it is very ideal for starting immediate business. The road is always busy and every one approaching east of Coimbatore (Singanallur, Sulur, Palladam) should pass through Ramanathapuram. So all shop here have high visibility. Local bus service is more than enough. People from Nanjundapuram Road, Puliakulam, Sungam, Byepass, Defence Area in Race Course, Sowripalayam etc all come to Ramanathapuram for shopping, hotel, hospitals etc. It has many hospitals like Bala Hospital, NM Hospital, Deepam Hospital, Vennila Homeo Hospital, GEM Hospital, Sathyan Eye Care Hospital, Ayurveda Hospital etc

Pros:

- Main Road (Trichy Main Road)
- Hi-Fi Residential Area
- Hi-Fi Commercial Area

Cons:

- Distance to Airport (11 Km)
- Distance to Railway Station (4 Km)
- Distance to Central Bus Stand (6 Km)

Posted: Jul 5, 2019 by Prince Antony

Ramanathapuram is a well developed area, ready to construction gated community plots, street light water connection for every plots.

Pros:

- Residential plots
- Any time bus facility
- Very close to city

Posted: Apr 3, 2015 by Anand chinna

Ramanathapuram is a part of Coimbatore city. It lies on the Trichy Road. It is mainly a residential area. It is one of the fast growing neighbourhoods in the city.

Pros:

- Highly residential area
- Right place to invest

Posted: Aug 27, 2013 by [Anand R \(Thuriya Properties\)](#)

Ramanathapuram, Coimbatore is rated 7 out of 10 based on 3 user reviews.

Disclaimer: The reviews are opinions of PropertyWala.com members, and not of PropertyWala.com.

Explore

[Similar Properties](#)

[Properties in Ramanathapuram, Coimbatore](#)

[Projects in Coimbatore](#)

[Brokers in Coimbatore](#)

More Information

Report a problem with this listing

Is this property no longer available or has incorrect information?

[Report it!](#)

Disclaimer: All information is provided by advertisers and should be verified independently before entering into any transaction. You may visit the relevant RERA website of your state to verify the details of this property. PropertyWala.com is only an advertising platform to help connect buyers and sellers and is not a party to any transactions, nor shall be responsible or liable to resolve any disputes between them.