

Griha Unnathi - Kyalasanahalli, Bangalore



Ample of fresh air circulation along with natural lighting

Griha Unnathi is presented by Griha Promoters Pvt Ltd at Hennur Road, Bangalore offers residential project that hosts 2/3/3.5 BHK apartments and meets the basics of Vaastu layouts

- Project ID: J918965891
- Builder: Griha Promoters Pvt Ltd
- Location: Griha Unnathi, Kyalasanahalli, Bangalore - 560077 (Karnataka)
- Completion Date: Sep, 2019
- Status: Completed

Description

GRIHA UNNATHI apartments have been designed on a one acre virgin piece of land, has been conceptualised and conceived around a central lush landscape courtyard, which provides ample of fresh air circulation along with natural lighting into all apartments and meets the basics of Vaastu layouts. The project host spacious 2,3 and 3.5 bhk apartments in the size ranges in between 1046 to 2234 sqft. The daily necessities like a railway stations, petrol pumps, parks and a bus stations are all available nearby this project.

Amenities:

- Club House
- Swimming Pool
- Gymnasium
- Jogging Track
- Tennis Court
- Multipurpose Hall
- Children's Play Area
- Lift
- Indoor Games
- Landscape Garden

Griha Promoters Pvt Ltd real estate entity that focuses on creating well designed spaces that are high on design and quality. They offer homes that are functional, aesthetic, offer value for money and have been delivering homes on time. They are a young team who have completed 8 projects from the time of inception in 2006 most being project in North Bangalore.

Features

Luxury Features

- Power Back-up ■ Lifts

Maintenance

- Rain Water Harvesting

Recreation

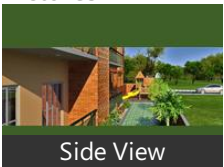
- Swimming Pool ■ Park ■ Fitness Centre / GYM
- Club / Community Center

Land Features

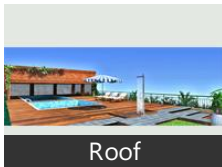
- Club / Community Center ■ Water Connection

Gallery

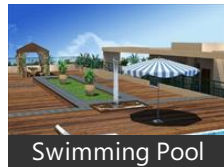
Pictures



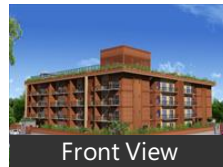
Side View



Roof



Swimming Pool



Front View

Floor Plans



Master Plan



Floor Plan A



Floor Plan B



Floor Plan C



Floor Plan D



Floor Plan E

Location

Landmarks

Building

Orchid Woods (<2km), Kemp Fort (<5km), Sobha Chrysanthemum (<4km), Karle Town Centre (<7km), Crystal Enclave (<4km), Oceanus Greendale (<6km), Krishna Northwoods (<6km), DS Max Spring Dale (<3km), SLS Spencer (<4km), SLS Symphony (<8km), Sobha City (■■■■■■■■■■) (<4km), R & S Riviera (<5km), R and S Riviera Bangalore (<5km), Gitanjali Apartments (<13km), Rajashree Manor (<12km)

Shopping Centre

MSR Regaliaa Elements Mall (<5km), Esteem Mall (<10km), Orion East Mall (<10km), GOPALAN GRAND MALL (<10km), SOUL SPACE ARENA (<14km), VR BENGALURU (<11km)

Hotel

Evoma (<10km), Roseline Suites (<7km), Chairman, Lemon Tree Premier-Ulsoor Lake (<1.. Hotel Nandhana Vista (<8km), The Royale Senate-Hebbal (<11km), Royal Orchid Resort & Convention C... Howard Johnson-Nagavara (<5km), Savoury Restaurant (<11km), The Sanctum Suites Bangalore (<14k... Howard Johnson by Wyndham Beng... Godrej Woodsman Estate (<10km), Country Inn & Suites By Radisson Be... Komfort Terraces Business Boutique ... Maple Inn-Kempapura (<9km)

Recreation

Manyata Embassy Business Park (<6k.. Lumbini Gardens (<8km), Hennur Banaswadi Cosmopolitan Cl... PVR Cinemas-MSR Elements Mall (<... Palace Ground (<13km), Mukunda Theatre (<9km), Snow City (<13km), Bangalore Palace (<14km), PVR Cinema (<11km), Orion East Mall (<10km), DECATHLON (<12km), Shri Lakshmi Theatre (<8km), Everest Digital-Frazer Town (<11km), Pushpanjali-Sultanpalya (<10km), Shri Amruth Chithra Mandira (<9km), BBMP Park (<6km), Fraser Town Park (<11km)

Public Transport

KR Puram Railway (<10km), Banaswadi Railway Station (<10km), KR Puram (<9km), Bmtc Kalyannagar Bus Station (<6km.. Hebbal (<11km), Nagavara (<6km), Yelahanka Railway Station (<12km), Krishnarajapuram Railway Station (<... Cantonment Railway Station (<14km.. Hebbal Railway Station (<11km), CV Raman Nagar (<11km), Swami Vivekananda Road (<12km), Bangalore East Railway Station (<11k... Bangalore Cantonment South Weste... Mekhri Circle-NB (<13km)

Business & Services

Kirloskar Business Park (<10km), RMZ Infinity (<10km), Bagmane Tech Park (<12km), Emc2 (<13km)

Restaurant & Shops

Lulu Value Mart (<1km), Sapna Book House (<13km), More Mega Store (<12km), Reliance Fresh (<9km), Kaveri Indane Gas (<9km), Pawan Textiles (<5km), Patels Inn (<11km), Korea (<6km), Empire Restaurant (<11km)

Hospitals & Clinics

Specialist Hospital (<7km), Orthopaedic Clinic (<8km), Dr Ambedkar Medical College Hosp ... Chaya Hospital (<8km), Banaswadi Hospital (<6km), Columbia Asia Hospital-ER (<10km), Chaya Super Speciality Hospital (<8k... Dr B R Ambedkar Medical & Hospita... Manipal Ankur (<6km), Contura Clinic (<7km)

ATM/Bank/Exchange

State Bank of India (<6km), Karnataka Bank-Banaswadi (<6km), State Bank of India-R A C P C Banasa... Karnataka Bank-Kasturinagar (<8km), City Union Bank-Yelahanka New Tow..

Petrol Station

Bharat Petroleum (<8km)

* All distances are approximate

Properties

Griha Unnathi News

Expert Reviews on Griha Unnathi

Explore

[Projects in Bangalore](#)

[Brokers in Bangalore](#)

More Information

Report a problem with this listing

Is any information on this page outdated or incorrect?

[Report it!](#)

Disclaimer: All information is provided by advertisers, including builders/agents/owners, or collected from publicly available sources and may not be verified under RERA. Any information provided on this website, including facts and figures, should be verified independently, including via the relevant RERA website, before entering into any transaction. PropertyWala.com is only an advertising platform to help connect buyers and sellers and is not a party to any transaction, nor shall be responsible or liable to resolve any disputes between them.

[Home](#) » [Bangalore Real Estate](#) » [Projects in Bangalore](#) » [Griha Unnathi - Kyalasanahalli, Bangalore](#)