

Emgee Anantam - Dona Paula, North Goa



new luxurious beach front project.

Emgee Anantam, luxurious sea facing 2,3,4 Bhk apartments & Villas in Dona Paula, North Goa 'anantam'.

- Project ID : J306267119
- Builder: Emgee
- Properties: Apartments / Flats
- Location: Emgee Anantam, Dona Paula, North Goa (Goa)
- Completion Date: Apr, 2013
- Status: Started

Description

EMGEE Group believes in essaying the exemplary, with unparalleled finesse.

We aim to shape the most coveted addresses for you in every part of the world. Charged by this philosophy, we expand our horizons to the vivacious region of south-eastern Spain, as well as other exotic locales in Eastern Europe, fringed by the seas, home to enviable contemporary comforts and wreathed in the spectacular beauty of nature.

As a leading real estate entity, we have been spearheading pathbreaking initiatives in all our ventures. Taking forth our passion to script your perfect dream home, we have arrived in the global arena to offer you a matchless configuration of locations worldwide.

EMGEE Anantam is one of the popular Residential Developments in Dona Paula neighborhood of Goa. It is among the Ongoing Projects of EMGEE GROUP. The landscape is beautiful with spacious Houses. Anantam whispers sheer bliss, filling your heart with joy and your ears with the elusive birdsong as it unravels across endless acres in the lap of nature. Located in the heart of Goa. Fringed by sleepy palms, woken up by the golden sunshine and lulled by the sea breeze moving across the unending shingle.

Features:

- Swimming Pool
- Wifi connectivity
- Library
- Tennis Court
- Gymnasium
- Community Hall

Club house:

- Gym and Sauna, steam room
- Indoor game rooms for tennis, table tennis
- Acantam pool with swim up bar and jacuzzi
- Meditation and yoga centre
- Business centre for meetings and conferences
- Café
- Entertainment area with 108" LCD area
- Gaming arcade for kids
- Air conditioned restaurant and bar

Living areas:

- Grohe- single living fitting in all bathrooms
- Shower cubicle with high pressure shower in master bathroom
- Split air conditioning in all rooms

Greenscapes:

- Landscape gardens and well-lit pathways for entire complex

Utilities:

- Intercom facility for each flat with video phone
- R.C.C. underground and overhead tanks with pump
- Dryscapes and External Areas:
- STP plant for waste management
- Acrylic finish paint on the elevation of building

Activity Areas:

- Deck beds around the pool area
- BBQ area for parties
- Volleyball and Tennis court
- Access to water sports
- WI-FI connectivity
- Open view amphitheatre

Specification

Structure: RCC framed structure on deep pile foundation, designed to compensate for earthquakes as per standards. Solid concrete block for internal walls and external walls. Cement plastered walls with putty finish interiors.

Flooring: Vitrified tiles for the entire apartments. Granite /vitrified tile decorative lobby.

Kitchen /work area: Granite countertop, stainless steel sink in kitchen & work area. Ceramic tiles up to 60 cm height above the kitchen and work area counter slabs. Provision for Aquaguard point in kitchen and washing machine point in work area.

Doorframes: All doorframes are either in polished moulded of Jacson / equivalent make or wooden frames of best quality hard wood.

Doors: All main doors are in Jacson exterior grade or of best quality hard wood. Polished moulded doors of Jacson / equivalent make for all rooms except toilet. Jacson / equivalent Flush doors for all toilets.

Windows: Powder coated Aluminium frame of Hindalco /equivalent make Sliding windows and Openable windows. All windows are provided with MS grills.

Painting: Weather coat emulsion of Ultima /equivalent for external walls, acrylic emulsion over putty finish for internal walls, ceiling with Oil Bound Distemper.

Toilets: Ceramic floor tiles and glazed wall tiles up to 210cm height, toilet accessories of Crabtree/equivalent make, ceramic fittings of Parryware / Cera or equivalent, wash basins, concealed plumbing with PVC, provision for geyser and hot/cold water shower. Sanitary fixtures matching with tiles.

Electricity: 3 phase power supply with concealed copper wiring of Finolex / equivalent, PVC conduits, elegant modular switches of Crabtree /equivalent, ample fan points/light points & power points, ELCB, MCB with independent KSEB meter. Split A/C provision for all bedrooms.

Telephone: Point for connection in living and master bed room.

Cable TV: TV and internet provisions in living and master bed room.

Water: Water through Sump and Over Head Tank.

Car parking: Covered car parking at extra cost. Allotment on priority basis of booking.

Fire fighting: Modern fire fighting system as per statute.

Lifts: Two fully automatic lifts stopping on all floors.

Features

Luxury Features

- Power Back-up ■ Centrally Air Conditioned
- Room AC ■ Water Softner

Lot Features

- Private Terrace ■ Balcony ■ Private Garden
- Corner Location ■ Park Facing

Interior

- Wooden Flooring

Recreation

- Swimming Pool ■ Park ■ Fitness Centre / GYM
- Club / Community Center

Land Features

- Freehold Land ■ Plot Boundary Wall ■ Corner Plot
- Feng Shui / Vaastu Compliant
- Park/Green Belt Facing ■ Water Connection
- Electric Connection ■ Close to Hospital
- Close to School ■ Close to Shopping Center/Mall

Security Features

- Security Guards ■ Electronic Security
- Intercom Facility ■ Fire Alarm

Interior Features

- Woodwork ■ Modular Kitchen
- Feng Shui / Vaastu Compliant

Exterior Features

- Reserved Parking ■ Visitor Parking
- Independent Garage ■ Servant Quarter ■ Basement

Maintenance

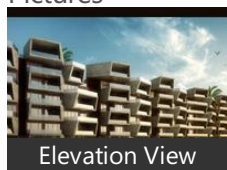
- Maintenance Staff ■ Water Supply / Storage
- Boring / Tube-well ■ Rain Water Harvesting
- Waste Disposal ■ RO System ■ Water Softner

General

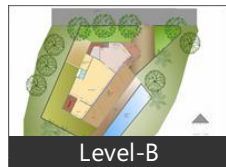
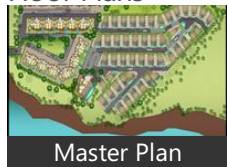
- Power Back-up ■ Room AC ■ Lifts ■ Wi-Fi

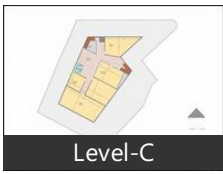
Gallery

Pictures



Floor Plans





Location

Landmarks

Transportation

Dabolim Airport (<12km), DELICIA TRAVELS (<2km), Paulo Travels (<7km), Kadamba Bus Terminus (<6km), Siridao Bus Stop (<6km), Trade Wings Institute (<7km), Car Hire in Goa (<7km), Interstate Private Bus Stand (<7km), Vasco Railway Station (<10km), Cidade De Goa Hotel (<2km), Vasco Da Gama Railway Station (<10... Sandalwood Hotel & Retreat (<2km), Karmali Railway Station (<15km), Dabolim Railway Station (<11km), Fidalgo Hotel (<7km), madgao station (<14km), Taxi Stand (<14km), Bus & Taxi Stand (<14km), Taxi stand (<21km)

Markets & Shopping Malls

Caculo Mall (<5km), Loja Grande Delhi (<7km), Pedro Fernandes & Co. (<7km), Saturday Night Market: The WUG (<1.. Antiques N Ethinix (<12km), Singbal Book House (<7km), Gauri Shopping Centre (<9km), sacha, Sha.la.la. Handicrafts (P) Ltd. (<15km.. GOA AUTO MALL (<11km), Calangute Beach Road Mall (<17km), Shetye Sales Syndicate Private Limite... Big G (<35km)

Banks & ATMs

State Bank of India (SBI) atm (<2km), Oriental Bank of Commerce Atm (<4.. United Bank of India (<6km), Ing Vysya Bank ATM (<6km), State Bank of India (SBI) atm (<7km), HDFC Bank ATM (<6km), State Bank of India (SBI) atm (<6km), State Bank of India (<1km), Bank Of Maharastra Branch (<3km), Indian Overseas Bank (<2km), Axis Bank (<6km), HDFC Bank (<4km), Punjab National Bank (<7km), Bank Of India (<3km)

Hotels & Guest Houses

International Center (<1km), Vainguinim Valley Resort (<2km), Goa University Guest House (<1km), panjim inn (<6km), Zuari View (<4km), Hotel Dona Paula Beach Resort (<4km Vainguinim Valley Resort (<4km), Mariton Guest House (<4km), Cidade De Goa Hotel (<2km), Sandalwood Hotel & Retreat (<2km), Prainha Resort By The Sea (<3km), Grand Hyatt Goa (<3km), Bambolim Beach Resort (<4km), Villa de Sol Hotel (<2km)

Restaurants & Clubs

panjim inn (<6km), Chances Club (<2km), Heritage Jazz (<6km), Casino Carnival Goa (<7km), Becsuk Bezar (<4km), Henry, Club Chowpatty (<5km), Club Tennis (<4km), Prainha Resort By The Sea (<3km), Villa de Sol Hotel (<2km), COROS VELVET RESTAURANT (<4km.. Vainguinim Valley Resort (<4km), Cafe Ritz Restaurant & Bar (<6km), spicy bella (<5km), Sher E Punjab (<7km)

Movie Halls

Inox Leisure Limited (<7km), Samrat Ashok Theatre (<6km), National Theatre (<7km), Hira Film Distributors (<6km), Cine National (<7km), El Dorado Theatre (<7km), The Hira Film Exhibitors (<9km), Rajhauns Theatre (<11km)

Parks

Vardhan (<2km), Park Plaza Hotel (<7km), Nirvana (<3km), Caranzelm Park (<4km), Ocean Park Colony (<3km), N I O Childrens Park (<4km), Children, Caranzalem Park (Old) (<4km)

Hospitals & Clinics

Pretty Smile Dental Clinic (<5km), Smilematic Dental Center (<4km), Dr. Karande Interdisciplinary Dental C.. NIO Dispensary and Clinic (<4km), Campal Clinic (<6km), Dr. Batras, Dental Rendezvous™ (<5km), Dr Nagarsekar, Manipal Hospital (<3km), Goa Dental College and Hospital (<4.. Bhandare Hospital (<6km), Goa Medical College & Hospital Bam.. Dr. Rajadhyaksha Hospital (<7km), Vintage Hospital (<5km), Dr Anil S Sardesai (<6km), Goa Medical College and Hospital (<...

Offices

Controller of Examinations Office (<1.. Caculo Mall (<5km), British Tourists Assistance Office (<6...

Armour Office Automation (<5km), Panchayat Office (<3km), Dona Paula Post Office (<4km)

Schools & Colleges

blackjagusa (<1km), Our Lady of The Rosary High School... Mustifund High School (<6km), Goa College of Fine Arts (<4km), People, Regina Mundi High School (<9km), Mary Imaculate High School (<6km), Goa Medical College Quarters (<6km.. Dhempe College (<5km), Goa College of Pharmacy (<6km), Academic Block GEC (<23km), Goa Dental College and Hospital (<4...

* All distances are approximate

Properties

Type	Area	Possession	Price *
2BHK Apartment / Flat		-	-
3BHK Apartment / Flat		-	-

* Data has been collected from publicly available sources and may not be up to date.

Emgee Anantam News

Expert Reviews on Emgee Anantam

Explore

[Projects in North Goa](#)

[Brokers in North Goa](#)

More Information

Report a problem with this listing

Is any information on this page outdated or incorrect?

[Report it!](#)

Disclaimer: All information is provided by builders, advertisers, or collected from publicly available sources and may not be verified as per RERA guidelines. Any information provided on this website, including facts and figures, should be verified independently before entering into any transaction. PropertyWala.com is only an advertising platform to help connect buyers and sellers and is not a party to any transaction, nor shall be responsible or liable to resolve any disputes between them.

[PropertyWala.com](#) » [North Goa Real Estate](#) » [Projects in North Goa](#) » [Emgee Anantam - Dona Paula, North Goa](#)