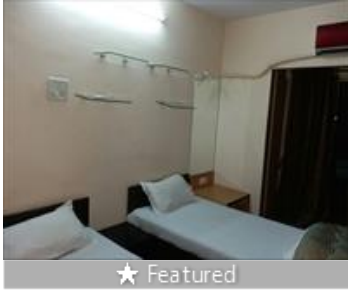


3 Bedroom Paying Guest for rent in Andheri East, Mumbai

6001-10,000



★ Featured

Furnished Paying Guest At Sher E Punjab Andheri East

Sher E Punjab Colony, Andheri East, Mumbai (Maharashtr...

- Area: 954 SqFeet ▾
- Bathrooms: Three
- Total Floors: Five
- Furnished: Furnished
- Rate: 9 per SqFeet
- Bedrooms: Three
- Floor: Second
- Facing: East
- Monthly Rent: 8,600

Advertiser Details

Smart Link Consultancy
Mr Gupta
Owner/Proprietor
Andheri East, Mumbai
mob: 9820580430
tel: 9820580403
mail:
www.propertywala.com/smart-link-consultancy

Scan QR code to get the contact info on your mobile
[View all properties by Smart Link Consultancy](#)

Description

Fully Furnished paying guest on rent is available on rent at Sher e punjab near Gurdwara, Andheri east. Asking rent: 8600/- negotiable.

We have more than 40 accommodations available this time in Sher e punjab and more than 80 accommodations in all locations of Andheri east.

Starting range for PG in Andheri east is 6000/- and above

Deposit: 1 month rent

Brokerage is applicable, amount of brokerage depends upon the term you are taking PG.

When you contact, don't forget to mention that you found this ad on PropertyWala.com.

Features

General

- Power Back-up ■ Room AC ■ Lifts
- High Speed Internet ■ Wi-Fi

Lot

- Private Terrace

Security

- Security Guards ■ Electronic Security ■ Fire Alarm

Maintenance

- Maintenance Staff ■ RO System
- Rain Water Harvesting

Location

* Location may be approximate

Landmarks

Offices

Mukteshwar Ashram Powai (<8km), Sant Nirankari Satsang bhawan (<9km www.Chembur.NET (<12km), Joshi Jagir Hall (<3km), Navinbhai Thakker Auditorium (<5km Nanda Kripa Hall (<6km), Najma Haptulla Hall (<7km), Swatantryaveer Vinayak Damodar Sa... Sambhaji Mitra Mandal (<8km), Ahimsa Hall. (<9km), Laxmi Nagar Hall (<9km), PANJI WADI (<10km), Jai Bhavani RTO Advisor (<10km), Sankalp sevasang Hall (<10km), sanskruti Hall (<12km), Samaj Kalyan Mandir By Anand Bagu..

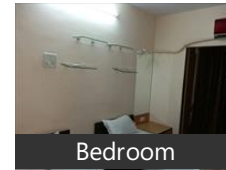
Education

Amchi Shala (<10km), Ryan International School (<7km), Kohinoor International School (<9km.. Indian Education Society New Englis... Municipal Primary And Secondary Sc.. Petrochem Middle East India Private ... The Montessori School International... Kangaroo Kids (<8km), Subhash Nagar MNP School (<12km), Drishti (<5km), American School of Bombay (<9km), Oberoi International School (<7km), VIBGYOR High School Goregaon (<7... St. Anthony, Uttkarsh Vidya Mandir (<10km), Holy Cross High School (<9km), Pawar Public School (<12km), Digital Academy - The Film School (<. Bal Shikshan Mandir (<7km), Stringbirds Playschool & Nursery (<6..

Shopping

Janta Stores Electric (<6km), Coffee & Tea Instant Premix - Soul F... Soul Foods (<11km), Coffee & Tea Instant Premix (<11km), Tsangpo, Apna Bazaar (<14km), Jay Bharat General Store (<3km), MAMAJI'S MEDICAL & GENERAL STO. Powai Pan Beedi Shop (<4km), Nagrik Suvidha (<5km), Sekhon General Stores (<6km), Free Drinking Water - Sheetal Jal Ken... Shiva stores (<8km),

Pictures



Bedroom

Janta Enterprises (<8km), Light General Store (<9km), Kum Kum Collection (<9km), Vinayak Coconut And Grain Stores (<.. Navina General Store (<9km), The Loot Mart (<9km)

Transportation

[more...](#)

Locality Reviews

Andheri East, Mumbai

Very Prime Location. Close to Metro, Railways, Bus Depot etc. Very good place for carrying out business.

Pros:

- *Very good location*
- *Mixture of Commercial & Residential*
- *Many Star Hotels Around*

Posted: Oct 25, 2017 by Bhanu Naik

andheri is well developed locality. it has all facilities such as : good network, well connected roads ,better lifestyle and 24 hours emergency facility.

Pros:

- *mumbai metro facility*
- *international airport*

Posted: Jun 11, 2017 by Gurwinder Singh

Ideal location for business, all kinds of businesses, good food.This very good demarcation between residential and commercial places. Even many Govt. offices present here

Pros:

- *Good Connectivity*
- *Variety of properties for all types of Orgs.*
- *Centrally located*

Cons:

- *Traffic Jam*

Posted: Feb 10, 2017 by Yash Mehta

Andheri East is prime location in western suburban as compare to other locality in Mumbai. This locality is suitable for both commercial and residential seekers, this has also prime public place such as international airport, metro railway etc.

Pros:

- *This area is well connect to Eastern and western Mumbai through metro railway.*

Cons:

- *This is the very traffic jam area of Mumbai*

Posted: Jun 19, 2016 by [Umesh Padhan \(Support Realty\)](#)

Andheri east is commercial hub in Mumbai easy connect to South Mumbai to North Mumbai & Thane also connectivity is easy by metro and train in Andheri

Pros:

- *Good Connectivity*

Cons:

- *Traffic Congesation*

Posted: Apr 16, 2016 by Kamlesh chouhan

Andheri East is a very good market in terms of connectivity, safety, and locality. As commercial business are growing day by day, Real Estate Market has a very good scope of growing in Andheri east.

Pros:

- *Familiar Location*
- *Excellent Connectivity throughout the city*
- *Market has increased*

Cons:

- *Powai, a High Traffic Zone*
- *Rates are high as demands increases*

Posted: Apr 12, 2016 by [Vikas Gupta \(Smartlink Consultancy\)](#)

Andheri East has huge commercial hub approx 36% of Commercial and corporate are based in Andheri East.

Pros:

- *Potential Area For Growth of Business*
- *Great Connectivity to Any part of Mumbai*
- *Metro Service available*

Cons:

- *Traffics noticed in peak hours*

Posted: Mar 21, 2016 by [Aashish Panday \(Monks Realty Property Consultant\)](#)

Andheri East is a hub of all commercial, MNC Banks and other offices with added benefit of International Airport and maximum no of Hotels and other such necessities requirements for a good office space such as connecting with all direction via Metro, Railways and buses.

Pros:

- *Good Connectivity*

Posted: Feb 25, 2016 by [monk jp \(Jp Monk Realty\)](#)

Andheri East is a serene and peacefully locality which is connected to all the major and important nodes of Mumbai. All the major business hubs are located in Andheri.

Pros:

- *International Airport*

- Proximity to SEEPZ, MIDC and Mumbai Metro
- Proximity to Goregaon through Aarey-JVLR connecting east-west suburbs

Posted: Feb 9, 2016 by [Lyn Dsouza \(Lyns Real Estate\)](#)

Andheri East is a very peaceful location. Easy to commute mid seeps airport Chakala, close to major MNC company easy access to western and eastern express highway.

Pros:

- It is very peaceful location.

Posted: Apr 25, 2014 by [Pravina Ghia \(Dayaraj Property\)](#)

Explore

[Similar Properties](#)

[Properties in Andheri East, Mumbai](#)

[Projects in Mumbai](#)

[Brokers in Mumbai](#)

More Information

Report a problem with this listing

Is this property no longer available or has incorrect information?

[Report it!](#)

Disclaimer: All information is provided by advertisers and should be verified independently before entering into any transaction. PropertyWala.com is only an advertising platform to help connect buyers and sellers and is not a party to any transactions, nor shall be responsible or liable to resolve any disputes between them.