

Alis Chamber - Andheri East, Mumbai



Commercial Office/Spaces

Alis Chamber is a Commercial Complex which comprises office spaces area 710 sft on the 2nd floor facing road exactly opposite Sahara Cargo Complex.

- Project ID: J119042311
- Builder: Sabir Ali
- Properties: Office Spaces, Apartments / Flats
- Location: Alis Chamber, Andheri East, Mumbai (Maharashtra)
- Completion Date: Jun, 2007
- Status: Completed

Description

Alis Chamber is a Commercial Complex which comprises office spaces area 710 sft on the 2nd floor facing road exactly opposite Sahara Cargo Complex. (Can see the gate of the cargo complex from office window). Self contained with lift. Completely renovated with new flooring and colors. Alis Chamber Area is one of the popular Commercial Developments in Andheri East Mumbai. It is among the Completed Projects of its Group.

Amenities:

- Paved area around building with lights
- 100% Generator Power back-up for Common Areas, Water Pump, Lift
- Ample Mechanized and conventional Car Parking & Two wheeler parking with Auto Lift.
- Security & Intercom
- Individual Toilet for each Unit
- Rolling shutter with inbuild locks
- 24 Hours Security

Features

Luxury Features

- Power Back-up ■ Lifts ■ RO System
- Water Softner

Land Features

- Club / Community Center ■ Park/Green Belt Facing
- Water Connection ■ Electric Connection
- Close to Hospital ■ Close to School
- Close to Shopping Center/Mall

Maintenance

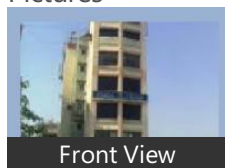
- Water Supply / Storage

Other features

- Society Name: ALIS CHAMBER
- Possession: Immediate ■ Ownership: Leasehold
- Age of Property: Less than 5 Years

Gallery

Pictures



Front View



Closer View

Location

Landmarks

Transportation

Vikhroli Railway Station (<1km), Andheri Railway Station (<4km), Sewri Railway Station (<4km), Tilak Nagar Railway Station (<4km), Jogeshwari Railway Station (<5km), Vile Parle Railway Station (<5km), Akbar Travels Airport Branch (<2km), Airport International Hotel (<2km), Airport Corner At Lions Club (<2km), 5 Star Hotels Next To The Airport (<2.. Airport (<2km), Airport Authority Of India (<3km), Airport R S [Reliance Electrical Ltd] (<.. A-13 New Airport Colony (<3km), Airport Colony (<3km)

* All distances are approximate

Properties

Type	Area	Possession	Price *
3BHK Apartment / Flat	1700 SqFeet	Immediate/Ready to move	₹ 3.9 crores

* Data has been collected from publicly available sources and may not be up to date.

Alis Chamber News

Expert Reviews on Alis Chamber

Explore

[Projects in Mumbai](#)

[Brokers in Mumbai](#)

More Information

Report a problem with this listing

Is any information on this page outdated or incorrect?

[Report it!](#)

Disclaimer: All information is provided by advertisers, including builders/agents/owners, or collected from publicly available sources and may not be verified under RERA. Any information provided on this website, including facts and figures, should be verified independently, including via the relevant RERA website, before entering into any transaction. PropertyWala.com is only an advertising platform to help connect buyers and sellers and is not a party to any transaction, nor shall be responsible or liable to resolve any disputes between them.

[PropertyWala.com](#) » [Mumbai Real Estate](#) » [Projects in Mumbai](#) » [Alis Chamber - Andheri East, Mumbai](#)