

## Nimbus The Palm Village - Sector 22A Yamuna..



thoughtful design prioritizes open-plan living spaces

Nimbus The Palm Village is located in the heart of Sector-22A Yamuna Expressway, Greater Noida offers 1&3 BHK apartments with various facilities.

- Project ID: J679119062
- Builder: Nimbus Group
- Properties: Apartments / Flats
- Location: Nimbus The Palm Village, Sector 22A Yamuna Expressway, Greater Noida - 201301 (Uttar Pradesh)
- Completion Date: Mar, 2028
- Status: Started

### Description

**Nimbus The Palm Village** is located in the heart of Sector-22A Yamuna Expressway, Greater Noida offers 1&3 BHK apartments ranging from 247-1128 sqft. The project is spread over 11.81 acres of land. It consists of 6 towers with 13 floors and 1374 units on offer. There are 2 blocks of 1 Bhk studio apartments having 702 Units, ?G+13 Floor, ?Furnished studio area of 525 sqft These Futuristic homes are loaded with premium specifications and grand amenities.

**RERA ID:** UPRERAPRJ558356/04/2024

### Amenities

- Club House
- GYM
- Jogging Track
- Kid play
- Open Space
- Parking
- Party Hall
- Power Backup
- Skating
- Sports
- Swimming Pool
- Water Supply

**Nimbus Group** is involved in the development of several commercial & residential projects in Noida, Greater Noida, and Expressway. The Hyde Park, The Golden Palms The Golden Palm Village, Express Park View, and Express Park View 2 are its multi-storied residential projects. The Group has embarked on a residential housing complex in Noida, Greater Noida, and Yamuna Expressway.

### Features

#### Luxury Features

- Power Back-up ■ Centrally Air Conditioned
- Room AC ■ Lifts ■ RO System ■ Water Softner
- Wi-Fi

#### Lot Features

- Balcony

#### Interior Features

- Woodwork ■ Modular Kitchen
- Feng Shui / Vaastu Compliant

#### Exterior Features

- Visitor Parking

#### Maintenance

- Maintenance Staff ■ Water Supply / Storage
- Boring / Tube-well ■ Rain Water Harvesting
- Waste Disposal ■ RO System ■ Water Softner

#### Security Features

- Security Guards ■ Electronic Security
- Intercom Facility ■ Fire Alarm

#### Lot

- Basement

#### Interior

- Marble Flooring ■ Granite Flooring
- Wooden Flooring

#### Recreation

- Swimming Pool ■ Park ■ Fitness Centre / GYM
- Club / Community Center

#### General

- Power Back-up ■ Centrally Air Conditioned
- Room AC ■ Lifts ■ High Speed Internet ■ Wi-Fi

### Gallery

#### Pictures



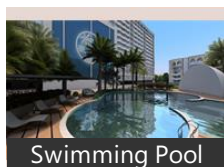
Night View



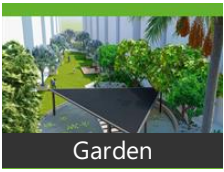
Main Entrance



Amenities



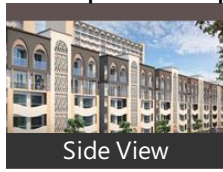
Swimming Pool



Garden



Children Park



Side View

## Floor Plans



Floor Plan-A



Floor Plan-B



Floor Plan-C



Floor Plan-D



Floor Plan-E



Site Plan



Location Map

## Location

## Landmarks

### Education

Music Aficionada (<0.5km), Spark It Solution (<0.5km), Dhruv Tuition Classes (<0.5km), ARMY INSTITUTE OF MANAGEMENT.. Army Institute of Management Tech... Saurabh Seshan Music (<1km), French Tuition French Classes French.. Preceptor N K Sharma (<1km), CCL Online Tutorials-Colonels Caree... Epic Fitness & Dance Academy (<1km) Green Noida Health and Research Ins.. Little Angels Greater Noida (<1km), RPS International School-Alternate G... Rps International School Greater Noi... American International School (<1km). The Tutor Solution (<1km), French Language Classes (<1km), Vidyarthi Class (<1km), Cuemath Center-Best Math Tuition C. Brite Innovative Cricket Academy (<1. Wisdomtree Solutions (<1km), Eurokids Preschool Gurjinder Vihar (<. Little Illusions Preschool (<1km), Pratham Dance Academy (<2km), Father Agnel School (<2km), Barry John Acting Studio (<2km), Tuition Classes-Class V-X (<2km), Msa Tuition Classes (<2km), Hogwarts Mystery University (<2km)

### Religious Places

Shri Panchamukhi Hanuman Ji Dham. Sharveshwar Temple (<1km), Shiv Mandir (<1km), St Josephs Church Gate 1 (<1km)

### Transportation

Hindustan Petroleum (<0.5km)

### Hospitals & Healthcare

DR.Preeti Laroia Clinic (<0.5km), Dental Clinic (<0.5km), Smile Care Greater Noida (<0.5km), Thyrocare (<1km), Dr Lal Pathlabs (<1km), Wellness Physiotherapy Dr. Shilpi Ag... VK Optic Point Sunglasses (<1km), Colonel, Smyle Kraft Multi Speciality Dental C... Veteran Watch (<1km), Mohinee Medicos & Path Lab (<1km.. Pathkind Labs (<1km), Dr. Sonu Panwar Clinic (<2km), Dr Rahul Punj Clinic (<2km), Dental Clinic Dr Harshita (<2km), Dr Pankaj Ranjan Clinic (<2km), Greano Opticals (<2km), Promhex Amrapali Hospital (<2km), Promhex Amrapali Hospital-ER (<2km) Yatharth Super Speciality Hospital (<... Ortho Spine Clinic (<2km), Yatharth Super Speciality Hospital-ER.. Jain Eye Care Centre (<2km), Dr. Sharma, Dr Devashish Sharma Clinic (<2km), DR.Teeth Dental Care (<2km)

### Offices

NTPC Sas (<1km), Auditorium (<1km), 7 Vows Weddings Inc (<2km), Yamuna Expressway Authority Office..

### Hotels & Guest Houses

Proposed 3 Star Hotel (<1km), Ace Iconic Hotel (<2km), Tapovan (<2km)

### Restaurants & Cafes

Mama Mia Truck (<1km), Urban Kitchen (<1km), Swagath Restaurant & Bar (<1km), HOM, Masala Restaurant (<1km), The Fluffy Oven (<1km), Shri Gokulam Multi Cuisine Restaura... The Foodysthan (<2km), Nirmala Aunty Momos (<2km), Momo Hut (<2km), Raja Restaurant (<2km), Red chill (<2km), Barista (<2km), King, Jeeman Rajasthani Food (<2km)

### Leisure and Outdoor

Football Ground (<1km), Volleyball Court (<1km), SS Tennis Academy (<1km), Fittech Sports Arena (<1km), Sportage Arena Greater Noida (<1km.. Vedaadventures (<1km), Swimming Pool (<1km), Greater Noida Shooting Club (<1km)

### Shopping

Awaho Gurjinder Vihar Old Market (<1..

### Banks & ATMs

Canara Bank-Awaho (<1km), Canara Bank (<1km), Canara Bank-Greater Noida Yamuna... Indusind Bank (<2km), HDFC Bank (<2km), ICICI Bank (<2km), Bank of Baroda (<2km)

\* All distances are approximate

## Properties

## Nimbus The Palm Village News

## Expert Reviews on Nimbus The Palm Village

### Explore

[Projects in Greater Noida](#)

[Brokers in Greater Noida](#)

### More Information

### Report a problem with this listing

Is any information on this page outdated or incorrect?

[Report it!](#)

**Disclaimer:** All information is provided by advertisers, including builders/agents/owners, or collected from publicly available sources and may not be verified under RERA. Any information provided on this website, including facts and figures, should be verified independently, including via the relevant RERA website, before entering into any transaction. PropertyWala.com is only an advertising platform to help connect buyers and sellers and is not a party to any transaction, nor shall be responsible or liable to resolve any disputes between them.

[Home](#) » [Greater Noida Real Estate](#) » [Projects in Greater Noida](#) » [Nimbus The Palm Village - Sector 22A Yamuna Expressway, Greater Noida](#)