

## Residential Plot / Land for sale in Tiruvallur, Chennai

2.5 lakhs



### Approved Plots At Thiruvallur Chitra Nagar

Chitra Nagar, Tiruvallur, Chennai (Tamil Nadu)

- Area: 1000 SqFeet ▾
- Facing: North
- Transaction: Resale Property
- Price: 250,000
- Rate: 250 per SqFeet **-65%**
- Possession: Within 6 Months

### Advertiser Details

**Saritha krishna**

Property Agent / Broker / Consultant

mob:

tel:

mail:

[www.propertywala.com/anbu-realtors](http://www.propertywala.com/anbu-realtors)

Scan QR code to get the contact info on your mobile

[View all properties by Anbu Realtors Pvt. Ltd.](#)

### Description

Approved Plots at Thiruvallur Chitra Nagar

Thirupachur Siva Temple

Thirumurugan Arts and Science College

Venkateshwara Engineering College

Sri Venkateshwara Arts & Science technology

Sri Nikethan CBSE School

Tiruvallur Proposed Bus stand

Police Retired Employees Association

Sai Baba Temple

District SP Head Office

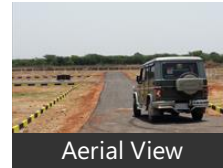
Big Bazaar

Aavin milk Booth

NH-205 200 feet 4 lane highway Under Construction

When you call, please mention that you saw this ad on PropertyWala.com.

### Pictures



Aerial View



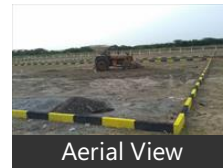
Aerial View



Aerial View



Aerial View



Aerial View

### Features

#### Land Features

- Clear Title
- Freehold Land
- Plot Boundary Wall
- Society Boundary Wall
- Feng Shui / Vaastu Compliant
- Adjacent to Main Road
- Park/Green Belt Facing
- Water Connection
- Electric Connection
- Close to Hospital
- Close to School

### Location

\* Location may be approximate

### Landmarks

ATM/Bank/Exchange

Indian Overseas Bank (<4km), Indian Overseas Bank-Thamaraipakk... Central Bank Of India-Pattaraiperum...

State Bank of India (<6km), Axis Bank (<6km), Indian Bank (<7km), Uco Bank (<8km), HDFC Bank-Palliyarai Kuppam (<8km. Tirupachur Cooperative Bank-Thirup.. Staet Papaengk Of Inththiyaa (<8km), DBS Bank-Thiruvallur (<8km), Tamil Nadu Grama Bank-Sangipatti (...)

Restaurant & Shops

Manoj Kirana and General Stores (<4... Kamal Groceries (<5km), Msr General Store (<5km), Paramesham Kirana And General Sto... Mahesh Kirana and General Stores (<.. Chennai Textiles (<5km), Kaamakshi Vegetables (<5km), Nayan Kirana and General Stores (<6... Badlu General Stores (<6km), Durga Kirana Shop (<7km), Lattif Provision Store (<7km), Kalyan Cloth House (<7km), Durga Kirana and General Stores (<7k.. Murali Kirana and General Stores (<7... Hanuman General Stores (<7km), Sree Rang General Stores (<7km), Fashion House (<7km), Bhavathi Dresses (<7km), Mamatha General Stores (<7km), Lkshmi Rice Depot (<7km), Murugan Kirana and General Stores (... Naveen Kirana and General Stores (<... Raja Ram Footwear (<8km), Muzafar Salim Garments (<8km), Meenakshi General Store (<8km), Gurudas Collection Garments (<8km), Sriyasha Cloth Stores (<8km), Ganesh Kirana and General Stores (<... Kesari Kirana and General Stores (<8k.. Sangameshwar Kirana And General S... Divya General Stores (<8km), Arun General Stores (<8km), Saniya Fancy and General Stores (<8k.. J. R. Garments (<9km), Backiyam General Store (<9km), Janaki General Stores (<9km), Govind Kirana Store (<9km), Jai Kumar Sing Hai Jain Readymade ... Madhesh Kirana and General Stores (... Muskhan Footwears (<9km)

Public Transport

Senji Panambakkam Railway Station ... Manavur Railway Station (<5km), Kadambathur Railway Station (<7km)

Hostel

[more..](#)

Locality Reviews

Tiruvallur, Chennai

It is a good city and facilities are there in the city and also train,bus,and school,college are there

Pros:

- Good city

Cons:

- No negative aspects

Posted: Feb 8, 2018 by [C. Murugaiyan \(Ammal Agency\)](#)

Well Developed very famous Town, Older than Chennai City. New highway is getting laid from Sriperambudur to Kattupalli port and ennor port, through Tiruvallur. mainly for Container trasportation.Well connected to Industrial estates like Sriperambudur, Kakkalur and Ambattur.

Pros:

- Older than Chennai city
- Town Panchayat

Cons:

- Still got lot of avenues of infrastructure growth

Posted: Apr 25, 2017 by Venkatesh Kumar

Tiruvallur is having an ancient temple town which is located strategically. It has access both by rail & road. The famous Sri. Veeraraghava temple is sacrosanct. Lots of industries are mushrooming. It plays a pivotal point in Chennai economy & commerce.It is a fast growing educational hub as well.

Pros:

- Excellent connectivity
- Away from hussle & bussle of city
- Cheap living

Cons:

- Water logging
- Distance to Chennai city
- Lack of drainage good roads infrastructure

Posted: Dec 27, 2015 by Ramachandran Viswanathan

Tiruvallur, Chennai is rated 5 out of 10 based on 3 user reviews.

Disclaimer: The reviews are opinions of PropertyWala.com members, and not of PropertyWala.com.

Explore

- [Similar Properties](#)
- [Properties in Tiruvallur, Chennai](#)
- [Projects in Chennai](#)
- [Brokers in Chennai](#)

More Information

Report a problem with this listing

Is this property no longer available or has incorrect information?

[Report it!](#)

**Disclaimer:** All information is provided by advertisers and should be verified independently before entering into any transaction. You may visit the relevant RERA website of your state to verify the details of this property. PropertyWala.com is only an advertising platform to help connect buyers and sellers and is not a party to any transactions, nor shall be responsible or liable to resolve any disputes between them.