

3 Bedroom Apartment / Flat for sale in Unique Youtopia, Kharadi, Pune

1.02 crore



3 Bedroom Apartment For Sale In Kharadi, Pune

Unique Youtopia, Kharadi, Pune - 411014 (Maharashtra)

- Project/Society: [Unique Youtopia](#)
- Area: 92 SqMeters ▾
- Bedrooms: Three
- Bathrooms: Three
- Transaction: New Property
- Price: 10,200,000
- Rate: 1.11 lakh per SqMeter ^{-5%}
- Age Of Construction: Under Construction
- Possession: Within 1 Year

Advertiser Details

TRESPECT
Kajal Sharma
Director

Bandra Kurla Complex, Mumbai
mob: 9999788104
tel: 9910164723
mail: propertywala.com/trespect-india-private-limited

Scan QR code to get the contact info on your mobile
[View all properties by TRESPECT INDIA PRIVATE LIMITED](#)

Description

Unique Youtopia is located in the heart of Kharadi, Pune offers 3 BHK apartments with different sizes ranging from 92 sq meters. The project offers 45+ amenities spread across 40000 sqft. It is spread over an area of 5 acres of land. There are 3 buildings with 300 units. The project is in the hub of activity and if we look for shopping options, which are just a few kilometers away.

RERA ID: P52100032483

Amenities

- Gazebo
- Infinity Pool
- Jogging Track
- Badminton Court
- Multipurpose Court
- Outdoor Gymnasium
- Wall Climbing for Kids
- Party Hall with Pantry
- Senior Citizens Sit Outs
- Creche / Daycare
- Spa / Massage Room
- School Bus Waiting Area
- Projector / Theatre Area
- WiFi Enabled Workstations
- Indoor Gymnasium with AC
- Visiting / Meeting Area in Lobbies

Please mention that you saw this ad on PropertyWala.com when you contact.

Location

* Location may be approximate

Landmarks

Nearby Localities

[Mundhwa](#), [Keshav Nagar](#), [Wadgaon Sheri](#), [Magarpatta](#)

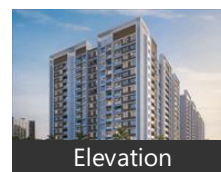
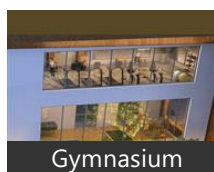
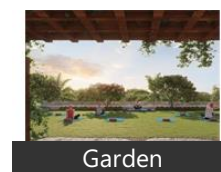
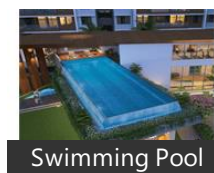
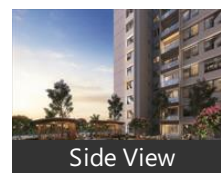
* All distances are approximate

Locality Reviews

Kharadi is considered a good investment destination for several reasons. Firstly, it is one of the fastest-growing areas in Pune, with excellent connectivity to major IT hubs like Magarpatta and

Kharadi, Pune

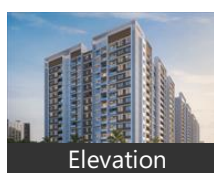
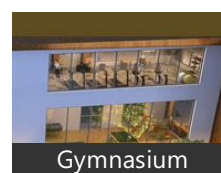
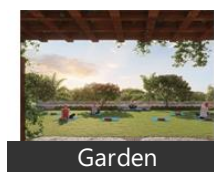
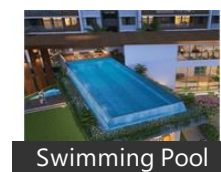
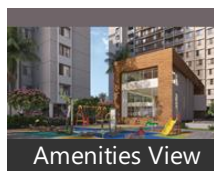
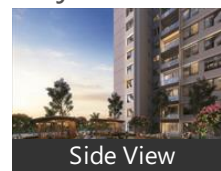
Pictures



Floor Plans



Project Pictures



* These pictures are of the project and might not represent the property

Project Floor Plans

Kalyani Nagar. Kharadi has seen a steady increase in property prices, driven by the high demand for residential and commercial properties in the area.

Pros:

- Infrastructure
- Connectivity
- Price trend

Posted: May 23 by Amit Kumar



Location Map

* These floor plans are of the project and might not represent the property

One of the promising place to live in. With all the services, malls within 6km radius.

Pros:

- Easy connectivity

Cons:

- Prices high

Posted: Sep 2, 2020 by Tipsy J

Everything is nearby.
Sophisticated atmosphere.
Hygienic.
All shopping malls,schools, hospitals, gymnasium,etc everything is nearby.

Pros:

- 1) Everything is Nearby.
- 2) Sophisticated atmosphere
- 3) Hygienic

Cons:

- NO CONS

Posted: Aug 9, 2020 by Shubham Kaswa

Kharadi is the latest, rapidly developing IT Hub of Pune. It is centrally located in the heart of the city. With EON IT Park, many world renowned businesses are setting up their offices in this location. Property rates in this location are shooting up fast. It is a sought-after locality for IT brands and residential projects are selling at a rapid pace. Kharadi is the hot location for investments and growing businesses.

Pros:

- Good connectivity, widest roads
- Malls,hospitals, multiplexes, schools in vicinity

Posted: May 15, 2019 by Sneha Bijlani

One of the fastest growing locality of Pune. Great connectivity to airport, railway station and access to Solapur and Ahmednagar highways. Close to shopping malls and movie theaters

Pros:

- Good transport connectivity
- Proximity to offices
- Close to the airport

Cons:

- Prices increasing rapidly

Posted: Feb 11, 2019 by Prabal Deb

Kharadih is one of the fastest growing residential and commercial hubs in Pune. With IT hubs and Commercial Malls, every thing from work to fun is within minutes of reach. Several gated communities and vicinity to airport and areas like Koregaon Park, Kalyani nagar and Viman Nagar are an added advantage.

Pros:

- Nearer to work places like MIDC, WTC
- Several Malls like Seasons Mall, Amonara Mall, Several Hospitals with emergency care units
- Cultural Diversity

Cons:

- The traffic at peak hours is sometimes bad

Posted: Jun 7, 2017 by Abhijit Majumdar

World Trade Center in Kharadi - hub of business in Pune. DP road connecting EON to Wagholi and Surrounding areas.

Pros:

- IT Hub
- International Company Presence
- Well developed Infrastructure

Posted: Jul 17, 2014 by [Jennifer A \(Gulmohar Development\)](#)

Good connectivity to EON IT park, distance is just 3.5 kms, and from Nagar road just a 200 m. Also well connected to Kharadi bypass and Magarpatta city.

Pros:

- Good connectivity to Eon IT park, Kharadi bypass and also Magarpatta city

Posted: May 4, 2013 by [Sagar sudame \(Pristine Group\)](#)

Kharadi, Pune is rated 8 out of 10 based on 8 user reviews.

Disclaimer: The reviews are opinions of PropertyWala.com members, and not of PropertyWala.com.

Explore

[Similar Properties](#)

[Properties in Kharadi, Pune](#)

More Information

Report a problem with this listing

Is this property no longer available or has incorrect information?

[Report it!](#)

[Projects in Pune](#)

[Brokers in Pune](#)

Disclaimer: All information is provided by advertisers and should be verified independently before entering into any transaction. You may visit the relevant RERA website of your state to verify the details of this property. PropertyWala.com is only an advertising platform to help connect buyers and sellers and is not a party to any transactions, nor shall be responsible or liable to resolve any disputes between them.