

2 Bedroom Apartment / Flat for sale in Electronic City, Bangalore

68 lakhs



2 Bedroom Apartment For Sale In Bangalore

Abhee Pride, Chandapura, Electronic City, Bangalore - 56..

- Area: 1105 SqFeet ▾
- Bathrooms: Two
- Total Floors: One
- Furnished: Unfurnished
- Price: 6,800,000
- Age Of Construction: 1 Years
- Possession: Within 6 Months
- Bedrooms: Two
- Floor: Ground
- Facing: East
- Transaction: New Property
- Rate: 6,154 per SqFeet **+5%**

Advertiser Details

Harsha g

HSR Layout, Bangalore

mob: 9164893194

tel:

mail:

www.propertywala.com/U53495934



Scan QR code to get the contact info on your mobile

Description

Near Electronic city, South Bangalore. price is starts from 68 lakh onwards. 25+ amenities are available. BMRDA and RERA approved project. Nearly completion project. posted by owner.

When you contact, don't forget to mention that you found this ad on PropertyWala.com.

Features

General

- Power Back-up ■ Lifts

Lot

- Park Facing

Exterior

- Visitor Parking

Maintenance

- Maintenance Staff ■ Water Supply / Storage
- Boring / Tube-well ■ Rain Water Harvesting
- Waste Disposal

Security

- Intercom Facility

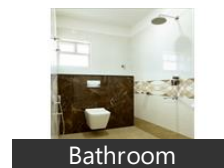
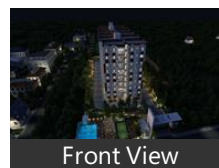
Interior

- Feng Shui / Vaastu Compliant

Recreation

- Swimming Pool ■ Park ■ Fitness Centre / GYM
- Club / Community Center

Pictures



Location

* Location may be approximate

Landmarks

Hospitals & Clinics

Active Physiotherapy Clinic (<1km), Surya Health Centre (<1km), Thyrocare (<1km), Dr Lal Pathlabs (<1km), Akshay Dental Care (<2km), Vivekananda Health Centre (<2km), Avc Multispeciality Dental Care (<2k... Narayana Opticians Chandapura (<2... Happy Lyfe Women S Health Clinic (... Athreya Dental (<2km), Apollo Diagnostics (<2km), Gomatesha Dental Clinic (<2km), Jaya Clinic (<2km), Neo Dental Care (<2km), Optical Express (<2km), Ayurveda Auishadhalay (<2km), Sigma Diagnostic Centre (<2km), Piles & Fistula Clinic (<2km), Athreya Women & Children, Rachana Polyclinic (<2km), Shri Lakshmi Clinic (<3km)

Restaurant & Shops

S V Designer Boutique (<1km), The Big Market Marsur (<1km), Habit Lounge Bar (<1km), Nyra (<1km), Salvation Ji Fashions (<2km), Family Hyper Market (<2km), Shri Chowdeshwari Silk Sarees & Tex...

Shri Vinayaka Fancy Store (<2km), Kalakruthi Art & Crafts (<2km), TS Plaza (<2km), Navi Fashion (<2km), Shri Sai Clothes (<2km), Kalabyerashwara General Store (<2km), Fashions Bazar (<2km), Crafted Clothing (<2km), Shri Chowdeshwari Traders (<2km), Sakshi Creations (<2km), NS Enterprises (<2km), Sai Suraksha Fashion (<2km), PSK Super Rich Collections (<2km), S L V Photo Frame Works (<2km), Denim Hut (<2km), Khadi Bhandar (<2km), Ohh Baby Exclusive Kids Clothing (<2km), J M Fashions (<2km), Liberty (<2km), Yashaswini Enterprises (<2km), KP Enterprises (<2km), Heera Textiles (<2km), Bhavana Provision Store (<2km), Wax Wings (<2km), Shri Sai Provision Store (<2km), The Big Market (<2km), N K Uniforms (<2km), Shri Ragavendra Rice Home (<2km), Shri Lakshmi Narasimha Fashions (<2km), Brand Mart (<2km), Jayashree Step In Style (<2km), M R Ladies Collection (<2km), S. S. R. Gifts & Fancy Centre (<2km), Aunty Uncle Family Wear (<2km), Heritage Parlour (<2km), Shri Lakshmi Venkateswara Fancy Dr... Pawan Traders (<2km), Varsha Fashion (<2km), Feet Max (<2km), Varunika Wedding Silks (<2km), Pooja Fashion (<2km), Trends (<3km), Krishna Collection (<3km), Devata Selection (<3km), Balaji Textiles (<3km), Guru Rice Traders (<3km), K S R Silks (<3km)

[more...](#)

Locality Reviews

Electronic City, Bangalore

Electronic City, located in Bangalore, is a bustling hub that epitomizes the city's evolution into India's Silicon Valley. Spread across acres of land, this technology park is a vibrant ecosystem that houses numerous IT companies, startups, and multinational corporations. It stands as a testament to Bangalore's meteoric rise as a global IT destination.

Pros:

- *less traffic*

Cons:

- *metro line establishment takes 3 more months*

Posted: Dec 28 by Sanju R

the best place of residence area for live available bank auction property in prakruthi solitair lower than market price

Posted: Aug 11, 2022 by Nehal Gourkar

Electronic city is prime locality with many IT hubs.

we will get very good connectivity to Hosur Main road, upcoming metro phase2, expressed highway, peripheral 4 lane road.

Pros:

- *After metro construction it will be a very great place to live*

Cons:

- *Present traffic due to metro construction*

Posted: Aug 4, 2019 by Deepika H

Prime location with peaceful environment. Nearby railway station with expressway just 9 km away. IT hub with schools, hospitals within reach. Posh locality with all food provisions are available. Good locality with peaceful environment.

Pros:

- *Prime location*
- *Posh locality*
- *IT hub*
- *Good connectivity*

Cons:

- *Traffic congestion*
- *Far away from airport*

Posted: Apr 21, 2019 by Samhita B

Prime location with peaceful environment. Nearby railway station with expressway just 9 km away. IT hub with schools, hospitals within reach. Posh locality with all food provisions are available.

Pros:

- *Prime location*
- *Good connectivity*
- *Posh locality*
- *IT hub*

Cons:

- *Traffic congestion*
- *Far from airport*

Posted: Apr 5, 2019 by Kavya B

Prime location. Nearby railway station with expressway just 9 km away. IT hub with all food provisions are available here. Good locality with peaceful environment.

Pros:

- *Prime location*
- *Peaceful environment.*
- *Posh locality*
- *Good connectivity*

Cons:

- *Traffic congestion*

Posted: Mar 28, 2019 by Vinusha B

Prime location. Nearby railway station. Schools, hospitals within reach. Posh locality

Pros:

- *IT hub*
- *Posh locality*
- *Good connectivity*

Cons:

- *Traffic congestion*

Posted: Mar 15, 2019 by Vidya B

One of the prime location. IT hub. Good locality with expressway being 9 km away. All food provisions are available.

Pros:

- Prime location
- Posh locality
- Peaceful environment.

Cons:

- Far from airport
- Traffic congestion

Posted: Mar 14, 2019 by Vinitha B

One of the prime location. IT hub. Peaceful environment with schools, hospitals and all food provisions are nearby.

Pros:

- IT hub
- Good locality
- Peaceful environment.

Cons:

- Traffic congestion
- No shopping complexes
- Far away from airport

Posted: Mar 7, 2019 by Sriram B

Electronic City is an information technology hub in Bangalore, India, located in Anekal taluk. It is one of India's largest electronic industrial parks, spread over 800 acres in Konappana Agrahara and Doddathogur villages in Bangalore. It consists of three zones called phases – Phase I, Phase II and Phase III.

Pros:

- IT Hubs

Posted: Jan 18, 2018 by [Sajid Ali \(Mj Infrastructure\)](#)

Electronic City, Bangalore is rated 6 out of 10 based on 10 user reviews.

Disclaimer: The reviews are opinions of PropertyWala.com members, and not of PropertyWala.com.

Explore

[Similar Properties](#)

[Properties in Electronic City, Bangalore](#)

[Projects in Bangalore](#)

[Brokers in Bangalore](#)

More Information

Report a problem with this listing

Is this property no longer available or has incorrect information?

[Report it!](#)

Disclaimer: All information is provided by advertisers and should be verified independently before entering into any transaction. You may visit the relevant RERA website of your state to verify the details of this property. PropertyWala.com is only an advertising platform to help connect buyers and sellers and is not a party to any transactions, nor shall be responsible or liable to resolve any disputes between them.