

Sreemali Ankshu Platina - Krishnaraja Puram(K ..



popular Residential Developments in satyasaibaba layout.

Ankshu Platina is one of the popular residential developments in satyasaibaba layout neighborhood of Bangalore. It's among well known projects of Ankshu Builders. The landscape is beautiful with spacious and over 32 Houses.

- Project ID : J919065431
- Builder: Ankshu Builders
- Properties: Apartments / Flats
- Location: Sreemali Ankshu Platina, Krishnaraja Puram(K R Puram), Bangalore (Karnataka)
- Completion Date: Sep, 2012
- Status: Started

Description

Ankshu Builders is one of the frontline builders that emphasize on the aspirations of its customers. The company has established a trustworthy relationship with its customers by unfalteringly incorporating their requirements in all its ventures. The company, in its pursuit for prominence, adheres to erecting top notch living spaces that are highly innovative, qualitative, and modern. The company has carved a niche for itself in the realtor segment by invariably achieving timely completion, landscaped locations, comfortable environment, and recent day facilities.

Ankshu Platina is one of the popular Residential Developments in satyasaibaba layout neighborhood of Bangalore. It is among the well known Projects of Ankshu Builders. The landscape is beautiful with spacious and over 32 Houses. It is BBMP approved 32 units luxurious apartment is near Bethel Nagar, Sai Baba Layout near SEA Engineering College - Hodi Junction, Whitefield-ITPL. All IT's Companies in and around Whitefield are just 2 to 3 kms from Bethel Nagar where our apartment is located. Layout is under BBMP limit and having all approval related legal papers for construction.

Amenities:

- Gymnasium
- Joggers track
- Children play area
- Multipurpose hall
- Landscape area
- Intercom
- Covered car parking
- DG backu
- Round the clock security
- Rain water harvesting system

Location : Near Bethel Nagar, Sai Baba Layout, Bangalore.

Features

Luxury Features

- Power Back-up

Interior Features

- Feng Shui / Vaastu Compliant

Recreation

- Fitness Centre / GYM

Land Features

- Feng Shui / Vaastu Compliant

Security Features

- Intercom Facility

Exterior Features

- Reserved Parking ■ Visitor Parking

Maintenance

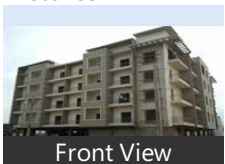
- Maintenance Staff ■ Rain Water Harvesting
- Waste Disposal

Other features

- Lift(s) ■ Security Personnel ■ Water Storage
- Club house / Community Center ■ 2 Balconies
- New Property ■ Feb ■ 2012 Possession
- Freehold Ownership ■ Under Construction Property
- Total Floors: 4 ■ Property on 3rd Floor
- Vitrified Flooring ■ Unfurnished

Gallery

Pictures



Front View



Side View

Location

Properties

Type	Area	Possession	Price *
3BHK Apartment / Flat	1620 SqFeet	-	₹ 68.85 lakhs

* Data has been collected from publicly available sources and may not be up to date.

Sreemali Ankshu Platina News

Expert Reviews on Sreemali Ankshu Platina

Explore

[Projects in Bangalore](#)

[Brokers in Bangalore](#)

More Information

Report a problem with this listing

Is any information on this page outdated or incorrect?

[Report it!](#)

Disclaimer: All information is provided by builders, advertisers, or collected from publicly available sources and may not be verified as per RERA guidelines. Any information provided on this website, including facts and figures, should be verified independently before entering into any transaction. PropertyWala.com is only an advertising platform to help connect buyers and sellers and is not a party to any transaction, nor shall be responsible or liable to resolve any disputes between them.

[PropertyWala.com](#) » [Bangalore Real Estate](#) » [Projects in Bangalore](#) » [Sreemali Ankshu Platina - Krishnaraja Puram\(K R Puram\), Bangalore](#)