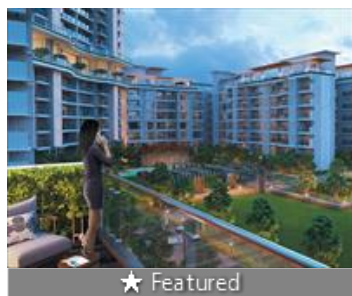


# 4 Bedroom Apartment / Flat for sale in Godrej Palm Retreat, Sector 150, N 2.65 crores



★ Featured

Godrej Palm Retreat Aims At Offering A Resort-Styled Lifestyle In The Heart Of The City

Godrej Palm Retreat, Sec 150, Noida, Sector 150, Noida ...

- Project/Society: [Godrej Palm Retreat](#)
- Area: 1957 SqFeet ▾
- Bathrooms: Four
- Total Floors: Twenty
- Furnished: Furnished
- Price: 26,525,000
- Rate: 13,554 per SqFeet **+15%**
- Age Of Construction: 1 Years
- Possession: Immediate/Ready to move
- Bedrooms: Four
- Floor: Second
- Facing: North East
- Transaction: New Property

## Description

Noida is one of the most promising localities coming up in Delhi NCR. Sector 150 is a residential hub located on the southern edge of Noida Expressway. It enjoys excellent connectivity to Noida, Greater Noida and Delhi via Noida-Expressway and Yamuna-Expressway and is just 8 km from Pari Chowk. Close to prestigious residential projects, this locality is gaining popularity and attracting investors as well as buyers. Developers like TATA and Godrej are developing premium projects in this locality. Noida Sector 148 metro station on Noida - Greater Noida Aqua line, is just 5 mins drive from the locality. Residents will not have to worry about daily commutation as many buses and other public transport facilities like cabs and autos are available.

Please mention that you saw this ad on PropertyWala.com when you contact.

## Location

\* Location may be approximate

## Locality Reviews

It is a fine piece of property with potential in near future as per the Noida sector 150 plan.

### Pros:

- Connectivity with Delhi NCR

### Cons:

- NONE

Posted: Nov 14, 2020 by Deepu Bamzai

Sector-150, Noida Expressway is an upcoming prime location as a residential cum corporate hub. Sector-150 Noida Expressway has been declared as a smart sector & is also a special economic zone, this sector is quite close to Pari Chowk, Night safari, Gautam Budh university, formula 1 & Yamuna Expressway. Sector-150 at Noida Expressway enjoys an added advantage as the proposed metro station at sector-149 is quite close, quick,easy connectivity via Noida Expressway adds to the advantage of this upcoming prime location.

### Pros:

- Quick and easy connectivity
- Smart sector
- Corporate cum residential sector

Posted: Apr 24, 2015 by [Plots Sale \(Balaji Properties Mayur Vihar\)](#)

Sector 150, Noida is rated 8 out of 10 based on 2 user reviews.

## Advertiser Details

**FAV Consulting Services**  
Shweta Mishra  
Agent

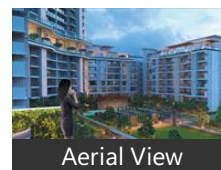
Sector 1, Noida  
mob: 7053593369

tel:  
mail: maira.vatika2014@gmail.com  
[propertywala.com/fav-consulting-services](http://propertywala.com/fav-consulting-services)



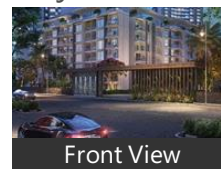
Scan QR code to get the contact info on your mobile  
[View all properties by FAV Consulting Services](#)

## Pictures

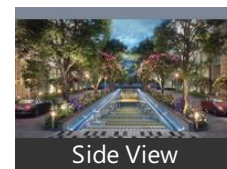


Aerial View

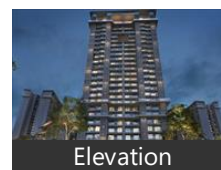
## Project Pictures



Front View



Side View



Elevation

\* These pictures are of the project and might not represent the property

## Project Floor Plans



Location Map



Master Plan



Floor Plan A



Floor Plan B

\* These floor plans are of the project and might not represent the property

Explore

[Similar Properties](#)

[Properties in Sector 150, Noida](#)

[Projects in Noida](#)

[Brokers in Noida](#)

More Information

Report a problem with this listing

Is this property no longer available or has incorrect information?

[Report it!](#)

**Disclaimer:** All information is provided by advertisers and should be verified independently before entering into any transaction. You may visit the relevant RERA website of your state to verify the details of this property. PropertyWala.com is only an advertising platform to help connect buyers and sellers and is not a party to any transactions, nor shall be responsible or liable to resolve any disputes between them.