

## RMZ Galleria - Yelahanka, Bangalore



Integrated township project at Yelahanka, Bangalore.

RMZ Galleria is an integrated township project in Yelahanka Bangalore. The RMZ Corp- project offers service- residences under the title 'RMZ Galleria Residences.'

- Project ID : J653119070
- Builder: RMZ
- Properties: Apartments / Flats
- Location: RMZ Galleria, Yelahanka, Bangalore (Karnataka)
- Completion Date: Dec, 2016
- Status: Started

### Description

**RMZ Galleria** is an upcoming multi-functional project in Yelahanka which offers premium condominiums, office space, a shopping mall and entertainment complex, Service- Residences and "RMZ Galleria Residences." The integrated township project spreads over 12 acres of flourishing land.

While the shopping mall at RMZ Galleria will have lifestyle stores, fast food and fine dining restaurants, cinema theaters, super markets etc., a good portion of land is separated for residential development. 322 aesthetically designed homes are developed in four towers. The project provides ample conveniences to the residents. The signature club - "Club Verve" is one of the outstanding features of the project.

### Apartment Types and Sizes

2 BHK + 2T - 1464 sq. ft.

3 BHK + 3T - 1910 sq. ft.

**Location:** Near To Jakkur Flying Club, Yelahanka, Bangalore

### Amenities

#### Indoors

- Concierge
- Multipurpose entertainment & party space
- Lounge
- Spa with Steam & Fitness room
- Pool table
- Table Tennis table
- Squash Court
- Virtual Golf
- Library
- Junior Club
- Cards Room
- Café Studio

#### Outdoors

- Swimming Pool
- Children's Swimming Pool
- Tennis/multipurpose court
- Basketball Court (half)
- Jogging Track
- Cycling track area for Kids
- Children's Play Area
- Pets Corner
- School Bus Bay at entrance
- Open-air Amphitheater
- Senior Citizens' Corner
- Sky Lounge on the 18th Floor
- Deck & Party Space
- V-Fit - The Gymnasium
- Aerobics/Yoga Room
- Infinity Pool

**RMZ Corp** is one of the leading real estate developers in India. The Bangalore Headquartered developer group has projects in 9 cities across India. They have projects in Chennai, Hyderabad, Kolkata, Mysore, Mangalore, Coimbatore, Kochi, Nagpur and Pune, other than Bangalore. The group commenced in the year 2002, has achieved the confidence of the people through developing quality oriented projects. The group is one of the pioneer and founding members of the Indian Green Building Council.

### Features

Luxury Features

Security Features

- Power Back-up ■ Lifts ■ RO System
- High Speed Internet ■ Wi-Fi

- Security Guards ■ Electronic Security
- Intercom Facility

#### Lot Features

- Balcony

#### Lot

- Basement

#### Interior Features

- Woodwork ■ Modular Kitchen
- Feng Shui / Vaastu Compliant

#### Interior

- Marble Flooring ■ Granite Flooring
- Wooden Flooring ■ Fly Proofing

#### Exterior Features

- Visitor Parking

#### Recreation

- Swimming Pool ■ Park ■ Fitness Centre / GYM
- Club / Community Center

#### Maintenance

- Maintenance Staff ■ Water Supply / Storage
- Boring / Tube-well ■ Rain Water Harvesting
- Waste Disposal ■ RO System ■ Water Softner

#### Commercial Features

- Cafeteria / Food Court ■ Conference room ■ ATM
- Service / Goods Lift ■ High Speed Internet / Wi-Fi

#### Land Features

- Society Boundary Wall ■ Club / Community Center
- Adjacent to Main Road ■ Park/Green Belt Facing
- Water Connection ■ Electric Connection
- Close to Hospital ■ Close to School
- Close to Shopping Center/Mall

#### General

- Power Back-up ■ Centrally Air Conditioned
- Room AC ■ Lifts ■ High Speed Internet ■ Wi-Fi

## Gallery

### Pictures



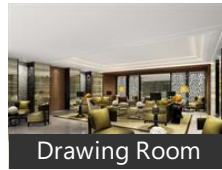
Front View



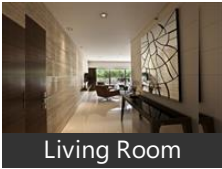
Night View



Elevation



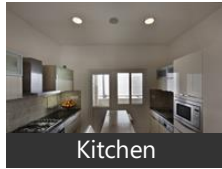
Drawing Room



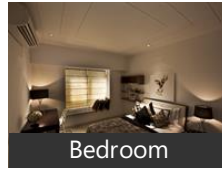
Living Room



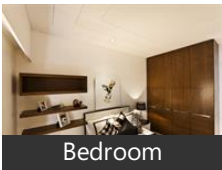
Dinning Room



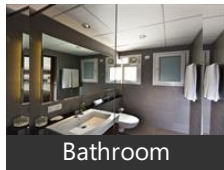
Kitchen



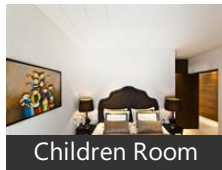
Bedroom



Bedroom



Bathroom



Children Room

### Floor Plans



Site Plan



Layout Plan



Floor Plan-A



Floor Plan-B



Floor Plan-C



3D Layout-A



3D Layout-B



Location Map

### Location

## Landmarks

### Transportation

Taxi Stand (<1km), Bengaluru International Airport Limit.. Hindustan Airport (<25km), Yelahanka Railway Junction (<1km), Kodigehalli Railway Station (<6km), Bangalore City Junction Railway Stat... Cantonment Railway Station (<16km... Yeshwanthpur Junction Railway Stati... Yeshwantpur Railway Station Parking.. Hebbal Railway Station (<8km), Bangalore East Railway Station (<15k... Yelahanka Police Station Bus Stop (<... NES Bus Station (<1km), Bus Stop (<1km), Allalassandra Bus Stop (<1km), Yelahanka Satellite Town Bus Station... Judicial Layout Last Bus stop (<2km), Kogilu Cross Bus Stop (<2km), Sharavathi (<2km)

### Markets & Shopping Malls

More (<1km), BDK Shopping Complex (<1km), G N Silks (<2km), Yelahanka New Town Shopping Com. Kurlappa Shopping Complex (<2km), Mantri Square (<16km), Garuda Mall (<19km), Big Bazaar (<8km), CAFE COFFEE DAY (<0.5km), Fabindia (<10km)

### Banks & ATMs

Oriental Bank Of Commerce (<0.5km.. Oriental Bank Of Commerce ATM (<... State Bank of India ATM (<2km), Icici Bank ATM (<1km), Corporation bank Atm (<1km), SBI ATM (<1km), Indian Bank (<1km), Bd & Brdcc Bank Limited (<0.5km), Canara Bank Yelahanka Branch (<2km Kotak Mahindra Bank - ATM (<1km), Bank (<1km)

### Hotels & Guest Houses

Captains Home Stay (<3km), Boys PG in Yelahanka (<4km), Paying Guest Accomodation in Yelah.. Molark Service Apartments (<10km), PG in Yelahnaka (<3km), Sterling Gardens (<7km), ITC Windsor (<16km), Akshara Regency (<11km), Royal Orchid Resort (<0.5km), Shreyas Residency (<2km), The Dominion Club & Resorts (<0.5k... Ramanashree California Resort (<4km. CHAIRMAN, Hopper, Reddy Home Mess (<2km), Pranav Upahar (<2km)

### Restaurants & Clubs

9th Mile Dhaba (<1km), Domino, Royal Orchid Resort (<0.5km), Coringa Restaurant (<0.5km), Chandra Cafe (<2km), Sagar Delux (<2km), Pragati Bar & Restaurant (<1km), Gokul Vegetarian (<2km), The Dominion Club & Resorts (<0.5k... Sobha Ultima Club House (<2km), Agni Aviation (<2km), Canara Bank Yelahanka Branch (<2km CHAIRMAN, Railway Wheel Factory Officers Club ... Newtown Club (<2km), Women

### Movie Halls

Prakash Theatre (<1km), Ganesh Theatre (<2km), K V Bhyregowda Kala Mandira (<3km.. Bayalu Ranga Mandira (<3km), Vaibhav Theatre (<10km), Cauvery Theatre (<14km), HMT Theatre (<10km), Pushpanjali Theatre (<11km)

### Parks

Rajiv Gandhi Park (<1km), Ganesha Park (<1km), Park (<2km), Nisarga Park (<2km), Botanical Garden (<4km), BBMP Park (<2km), Shankar Nag Park (<2km), 4th Phase Park (<4km)

### Hospitals & Clinics

Neha Prakash Hospital (<2km), Shushrusha Nursing Home (<1km), Deeksha Hospital (<1km), Yelahanka Government Hospital (<1... Jayalakshmi Hospital (<1km), Columbia Asia Hospital (<7km), Kamal maternity and Surgical nursin... Dr Agarwal Eye Hospital (<2km), Balaji Multispeciality Dental Clinic (<... HOME CARE CLINIC (<0.5km), Patel Child And Dental Care (<1km), Sowmya Dental Clinic (<1km), Dental Health Centre (<1km), Lakshmi Dental Clinic (<1km), Roopa Dental Care (<2km), Partha Dental Hospitals & Clinic (<2k..

### Offices

Post Office (<1km), Bescom (<0.5km), Yelahanka Telephone Exchange (<0.5.. Yelahanka (<1km), BEO Office (<1km), Integra Micro Systems (<3km), NES Office (<1km), RTO - Regional Transport Office (<2k..

### Schools & Colleges

Vidyashilp Academy (<1km), Srishti School of Art Design and Tech.. Seshadripuram First Grade College (<... Mallya Aditi International School (<2... Vidyashilpa Academy (<1km), Gandhi Krishi Vignan Kendra (<3km), Mec English Primary School (<1km), Canadian International School (<4km. NITTE Meenakshi Institute Of Techno. BMS Institute of Technology (<7km), Presidency College (<7km), Ramakrishna Ayurvedic Medical Coll... M S Ramiah Institute Of Technology...

\* All distances are approximate

## Properties

| Type                  | Area        | Possession | Price *      |
|-----------------------|-------------|------------|--------------|
| 3BHK Apartment / Flat | 1910 SqFeet | -          | ₹ 1.95 crore |
| 3BHK Apartment / Flat | 1917 SqFeet | -          | ₹ 1.55 crore |

\* Data has been collected from publicly available sources and may not be up to date.

### Properties available in 'RMZ Galleria'

**2 Bedroom Flat for sale in RMZ Galleria, Ambedkar Colony, ..** 1 - 1.5 crores



### 1478 SqFeet Apartment

ID: P71522551 — Posted: 29 days ago by Digvijay Desai

Ready to move 2BHK Apartment in RMZ Galleria Residences (RMZ Galleria)

Designed to fit modern living, this residential apartment is part of one of the prime localities of the city away from the chaos and hustle-Bustle. Available with the owner is a property spread across a super built-Up area of 1464sq.Ft. This east facing apartment is a vastu compliant unit... [more details](#)

## RMZ Galleria News

## Expert Reviews on RMZ Galleria

### Explore

[Projects in Bangalore](#)

[Brokers in Bangalore](#)

### More Information

### Report a problem with this listing

Is any information on this page outdated or incorrect?

[Report it!](#)

**Disclaimer:** All information is provided by builders, advertisers, or collected from publicly available sources and may not be verified as per RERA guidelines. Any information provided on this website, including facts and figures, should be verified independently before entering into any transaction. PropertyWala.com is only an advertising platform to help connect buyers and sellers and is not a party to any transaction, nor shall be responsible or liable to resolve any disputes between them.

[PropertyWala.com](#) » [Bangalore Real Estate](#) » [Projects in Bangalore](#) » [RMZ Galleria - Yelahanka, Bangalore](#)