

Aradhana Palace - Patia, Bhubaneswar



Modern Lifestyle Apartments

Aradhana Palace in Patia, Bhubaneswar is one of the most popular residential development of Aradhana Group.No matter who we are and what we do, home is where our true happiness lies.

- Project ID : J761190298
- Builder: Aradhana Property Development Pvt Ltd
- Properties: Apartments / Flats, Residential Plots / Lands
- Location: Aradhana Palace, Patia, Bhubaneswar - 751031 (Odisha)
- Completion Date: Dec, 2012
- Status: Started

Description

Aradhana Property Development Pvt Ltd, is a registered company under the companies Act, 1956 bearing Regd. No.15-05483, Dt: 07.10.98 is one of the builders of Bhubaneswar being distinct in itself, it being one of the leading builders of Bhubaneswar is continuously making profits since its inception. The main theme of this company is to satisfy the people's urge by adopting new innovations for construction. It mainly deals with the business of real estate developers, builders, contractors, architects, interior decorators, town planners and farm house owners. It can purchase or take in lease any area, buildings, from houses etc. and develop. sub plot or partition the same and can dispose or maintain the same.

Aradhana Palace in Patia, Bhubaneswar is one of the most popular residential development of Aradhana Group.No matter who we are and what we do, home is where our true happiness lies. It's where life's bonds are fostered and enduring relationships are nurtured. With the modern world's pace outrunning our lives, our residential setting assumes even more importance in contributing to our family's well-being. Today's home must also cater to the needs of the family like recreation, security and fitness along with the presence of a great community. Giving our family a home like that to live in, is the least we can do. After all, isn't the happiness of our loved ones what life is all about?All that you need is right here. The comfort of a modern home in harmony with nature and everything else your family deserves. Free from the clutches of the everyday world. Come, awake to a better life..

Amenities:

- Designed to cope up with cities climate condition with abundance of light, air and healthy feelings
- Community Center
- Air- conditional Fitness center
- Land spaced terrace Garden, a confluence of color and fragrance
- Jogging Track with green look over
- Water fountains for a cool ambiance
- Children's Play Area
- Party Space at terrace with Kitchen
- Elegant Entrance Lobby for each block
- Common toilet at stilt level
- Won Car Park (at extra cost)
- Three Lifts
- Well planned underground network of electricity, drainage, water supply
- Rainwater harvesting
- R.C.C. Roads with adequate lighting
- Split Air- conditioner of 1.5 Tonne in master bedroom.

Specifications:

Structure:

Ensures total protection and safety. Earthquake resistant, R.C.C. framed Structure with Footing, Columns, Beams and Slabs in R.C.C.

Flooring:

Living, Drawing, Dinning, Bedrooms & Kitchen area: Vitrified tiles from reputed make

Toilet & Balcony:

Anti skid ceramic tiles

Common Areas:

Marble or Equivalent

Doors & Windows:

Main Door & Inner Door-Flush doors with designer veneers

Inner Doors-Flush doors with designer laminates

Toilet:

Flush doors with designer laminate

Door Frames:

Sal wood

Windows:

Color anodized aluminum with glass and MS grill for protection

Painting of Walls:

Internal-Putty finish with acrylic emulsion paint

External-Putty finish with Weather resistant paint

Kitchen:

Granite cooking platform with glazed ceramic tiles cladding up to 2ft. height above the Kitchen **Platform**
Stainless steel sinks of approved make

Toilets:

CP Fittings of Jaguar Equivalent
Designer ceramic tiles on walls up to 7 ft. height
Exhaust Fan & provision for Geyser

Electrical Work:

1.5 Tonne Split AC with wiring in Master Bedroom
Conducting for AC in other Bedroom & Living Room

Communications Systems:

Telephone points Master Bed Room and Living
TV points in Master Bed Room and Living room

Plumbing & Water:

Concealed piping for External & Internal Lines with high quality PVC or equivalent pipes & fittings
24hrs. water supply with overhead tank & underground sump for storage of water.

Features

Luxury Features

- Power Back-up ■ Centrally Air Conditioned ■ Lifts
- RO System ■ Water Softner

Interior Features

- Woodwork ■ Modular Kitchen
- Feng Shui / Vaastu Compliant

Recreation

- Swimming Pool ■ Park ■ Fitness Centre / GYM

Land Features

- Feng Shui / Vaastu Compliant
- Adjacent to Main Road ■ Water Connection
- Electric Connection ■ Close to Hospital
- Close to School ■ Close to Shopping Center/Mall

Security Features

- Security Guards ■ Electronic Security
- Intercom Facility ■ Fire Alarm

Exterior Features

- Reserved Parking ■ Visitor Parking

Maintenance

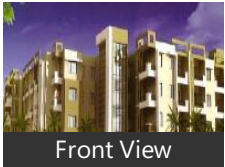
- Maintenance Staff ■ Water Supply / Storage
- Rain Water Harvesting ■ Waste Disposal

Other features

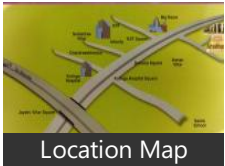
- Security / Fire Alarm ■ Private Garden / Terrace
- Corner Flat / House / Plot ■ Lift(s)
- Security Personnel ■ Water Storage
- Club house / Community Center
- Booking Amount: Rs. 500000
- Society Name: ARADHANA PALACE
- Furnish: Furnished ■ Additional Rooms: Others
- Transaction: New Property ■ Possession: Dec ■ 2012
- Ownership: Freehold
- Age of Property: Under Construction
- Total Floors in Complex: 4
- Property on Floor: 1st Floor

Gallery

Pictures



Floor Plans



Location

Landmarks

Transportation

Biju Pattanaik Airport Road (<14km), Fire Section (<14km), Biju Pattanaik Airport (<15km), Amita Jena House (<15km), Airport Cricket Club (<15km), Bhubneshwar Airport (<15km), Airport Road (Halfway Thru) (<15km), Bbi Bhubaneswar Airport (<15km), Bbsr Airport Old Terminal (<15km), Bhubaneswar Airport (<16km), Patia Railway Station (<3km), Mancheswar Railway Station (<5km), Vanivihar Railway Station (<5km), Kanan Vihar (<1km), Kiit Bus Stand And Parking (<3km), Infocity Bus Stop (<3km), Silicon Bus Stand (<4km)

Banks & ATMs

Allahabad Atm (Ashu Banaya Hai (<2.. Icici Atm (<3km), Sbi Atm (<6km), Icici Bank(Rma) (<2km), Punjab National Bank (<3km), Sbi Bank (<3km), Proposed Icici Bank Regional Hub (<... Union Bank Of India (<5km), Uco Bank (<6km), Indian Overseas Bank (<6km)

Restaurants & Clubs

Sastik Clinic And Cottage Restaurant... Danki Restaurant (<3km), Homely Raj Restaurant (<3km), Lion Cricket Club (<2km), Biswabharati Club Added (<3km), Sahara Club (<3km), Youth Club (<3km), Gitb Press Club (<4km), Riding Club (<4km), Twincity Club (<5km), Nalco Club (<6km), Police Club (<6km)

Hotels & Guest Houses

Guest House Of Orissa Tyres Limited... Oseb Guest House (<8km), New Guest House...Atul Dwivedis Ro... State Guest House (<11km), Ouat Guest House (<12km), Uma Hotel (<4km), Ambika Hotel (<5km), Bhagabata Bhai Hotel (<6km)

Markets & Shopping Malls

Maruti Corner A Complete Shopping... Tirkeys Shopping Complex (<3km), Shopping Complex Padmapani Vihar... Maruti Mall (Big Bazaar) (<2km)

Movie Halls

Keshari Talkies (<11km), Shriya Talkies (<12km), Swati Talkies (<12km)

Hospitals & Clinics

Baidyanath Mishra Memorial Hospita.. Care Hospital (<3km), Kims Hospital (<3km), Site For Asian Hospital And Research... Kalinga Hospital Nurse And Staff Ho... Mamta Hospital (<4km), Ananta Jyot Eye Hospital (<5km), Hemalata Hospital (<5km), Kalinga Hospital (<5km), Kalinga Hospital Chowk Crtd (<5km), Sastik Clinic And Cottage Restaurant... Smile Dental Clinic (<5km)

Offices

Unnayan Office- Hig 143 (<1km), Asian School Of Business Managemen.. Dera(Office) Of God Rajan. (<2km), Administrative Officers Office (<3km... Imgenexindia Office And R And D La... Wipro Temporary Office (<4km), Ic-Orissa(Prayas) Office (<4km), Osil Office (<4km), Adimata Colony. Next To Adimata T... C.W.Ms Office(Administrative Block)...

Schools & Colleges

College Of Engineering (<2km), College Gardens (<2km), College Of Engineering And Koustuv... Subas Science College (<2km), Muna Bhai (B.Tech) Silicon College (... Adyant +2science College-A Division.. Maharishi Womens College (<4km), Rajdhani Engg.College(Rec) (<5km), Budu River Bridge (<5km), Regional College Of Management (<... Asian School Of Business Managemen... Odm Public School (<2km), Kiit School Of Rural Management Ks... Sai International School (<2km), Patia Girls High School (<2km), Patia School (<3km), School Of Technology (<3km), School Of Technology Main Gate (Ca.. Sonu And Romis School (<3km), Vem School (<3km)

Parks

Kanan Vihar Proposed Park (<1km), Idco Park (<2km), Green Park (<3km), Electrical Park (<4km), Infocity (<4km), Cosmo Park (<4km), Imfa Group It Park (<4km), Buddha Park (<4km), Galib Park (<5km)

* All distances are approximate

Properties

Type	Area	Possession	Price *
3BHK Apartment / Flat	1610 SqFeet	-	₹ 65 lakhs
Residential Plot / Land	2000 SqFeet	Immediate/Ready to move	₹ 14 lakhs

* Data has been collected from publicly available sources and may not be up to date.

Properties available in 'Aradhana Palace'

Land for sale in Aradhana Palace, Info Valley, Bhubaneswar 14 lakhs



2000 SqFeet Residential Plot @ Rs.700/SqFeet

ID: P9685925 — Posted: Jan 31 by [OMM SHREE](#)

PLOT FOR SALE IN BHUBANESWAR (Aradhana Palace)

At BHUBANESWAR FIRST POSATION WITH BOUNDARY WALL, THEN SAME DAY REGISTRATION . THEN PAYMENT. GHARABARI BOUNDARY PLOT OMM VIHAR AT-TAMANDO, Kalinga Vihar Mouza- Kashipur Rs-1210 per. Square feet. INFO COLONY Rs- 700 per. Sqft Near Info city-2, Janla, Madanpur, GITA Engineering ... [more details](#)

Aradhana Palace News

Expert Reviews on Aradhana Palace

Explore

[Projects in Bhubaneswar](#)

[Brokers in Bhubaneswar](#)

More Information

Report a problem with this listing

Is any information on this page outdated or incorrect?

[Report it!](#)

Disclaimer: All information is provided by builders, advertisers, or collected from publicly available sources and may not be verified as per RERA guidelines. Any information provided on this website, including facts and figures, should be verified independently before entering into any transaction. PropertyWala.com is only an advertising platform to help connect buyers and sellers and is not a party to any transaction, nor shall be responsible or liable to resolve any disputes between them.

[PropertyWala.com](#) » [Bhubaneswar Real Estate](#) » [Projects in Bhubaneswar](#) » [Aradhana Palace - Patia, Bhubaneswar](#)