

Gera's GreensVille SkyVillas - Kharadi, Pune



prestige of villa living

SkyVillasT are spacious and luxurious duplex that give you the prestige of villa living and the convenience of an apartment.

- Project ID : J606119081
- Builder: Gera Builders
- Properties: Apartments / Flats, Independent Houses
- Location: Survey no. 64/1-6, Off Pune-Nagar Highway, Kharadi, Pune (Maharashtra)
- Completion Date: Apr, 2011
- Status: Starting

Description

Gera's GreensVille SkyVillasT are spacious and luxurious duplex that give you the prestige of villa living and the convenience of an apartment. Each home in Gera's GreensVille SkyVillasT comes with a backyard with picket fences, double height ceiling, a family room and a servant room.

Township spread over 13 acres and 9 towers.

The current phase of development consists of 3 towers – towers 3, 4 and 5. Towers 3 and 4 consist of 60 SkyVillas TM while tower 5 has 65 SkyVillas TM . Each floor in tower 3 and 4 has 12 SkyVillas TM while there are 13 SkyVillas TM per floor in tower 5. Since each SkyVilla TM is a duplex, each tower consists of 5 floors – ground floor, floor 3, floor 5, floor 7 and the Penthouse.

Each tower has a podium with ample basement parking. The podium is fully landscaped with water bubblers. The floors on top have skywalks which are also landscaped adding to the beauty of the project.

Gera's SkyVilla's Features

- All units have two levels.
- Private entrance pathway leading to a patio with sloping roof.
- Entrance lobby with double height ceiling.
- Backyard with picket fences.
- Large sized family room on the upper level.
- One bedroom at the lower level.
- Walk-in wardrobes.
- Kitchen with utility room.
- Attached servant's room with separate entrance.

Flooring

- Living Room - 1M X 1M vitrified tiles
- Master Bedroom - laminated wooden flooring
- Bedroom - 24" x 24" vitrified tiles
- Family Room - 1M X 1M vitrified tiles
- Kitchen - ceramic tiles
- Bathrooms - ceramic tiles
- Backyard - Anti-skid ceramic tiles

Windows

- UPVC windows for living, dining, bedrooms and kitchen
- Powder-coated aluminium windows for bathrooms
- Natural stone sill on all windows
- Safety grills for all windows
- Mosquito netting for all windows

Kitchen

- Open plan kitchen
- Granite platform
- One and a half bowl stainless steel sink
- Water purifier provision
- Provisioning for exhaust fan
- Attached utility room
- Ceramic tiles from the platform to the lintel level

Doors

- Designer panel door for the entrance
- Teak Wood door frames for bedrooms and entrance
- Laminated flush doors for bedrooms and bathrooms
- Granite door frames for bathrooms
- UPVC sliding door for the terrace

Bathrooms

- 3 fixture bathroom
- Kohler fittings
- Washbasin with granite platform and mirrors
- Guest bath with glass bowl
- Glass shower partition in the master bathroom
- Intuitive fixture setting
- Rustic finish tiles till lintel level
- Geyser planning (plumbing and electrical)

Electrical

- Child-proof modular switches
- Concealed copper wiring
- Fire-retardant wires
- Earth leak circuit breaker
- Distribution board with MCB
- Generator back-up of 2KW per apartment

Location :-

- SkyVillasT are located in the upcoming suburb of Kharadi, Pune. Kharadi is the sixth fastest growing IT destination in India (source: NASSCOM). The suburb has two fully active SEZs, numerous large IT parks, 5 star Hotels (active and proposed), multiplexes, hypermarkets, big brand malls and shopping zones. Kharadi is conveniently located :
- 7 kms from Pune's International and Domestic Airport
- 14 kms from Pune's Railway Station
- 6 kms from Kalyaninagar
- Kharadi is poised to become the next Kalyaninagar of Pune.

Features

Luxury Features

- Power Back-up ■ Lifts

Lot Features

- Private Terrace ■ Balcony ■ Private Garden

Exterior Features

- Reserved Parking ■ Visitor Parking ■ Servant Quarter ■ Maintenance Staff ■ Water Supply / Storage

Commercial Features

- Service / Goods Lift

Security Features

- Security Guards ■ Intercom Facility

Interior Features

- Modular Kitchen ■ Wooden Flooring

Maintenance

- Maintenance Staff ■ Water Supply / Storage

Land Features

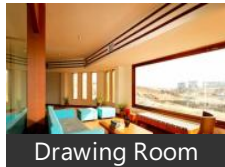
- Clear Title ■ Plot Boundary Wall
- Adjacent to Main Road ■ Water Connection
- Electric Connection

Gallery

Pictures



Front View



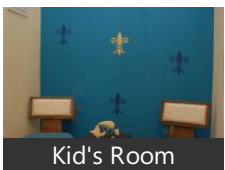
Drawing Room



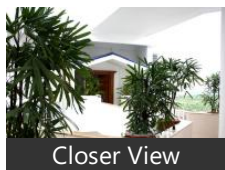
Living Room



Interior View



Kid's Room



Closer View



Billiards Room

Floor Plans



Location Map



Layout Plan

Location

Landmarks

Transportation

Pune Airport (<6km), Lohegaon Airport (<7km), Pnq PuneLohegaon Airport (<7km), Pune Airport (<7km), Pune Airport (<8km), Airport Parking (<8km), Main Airport Terminal (<8km), Pune International Airport And Loha... lbn (<10km), Hadapsar Railway Station (<7km), Manjri Railway Station (<8km), Gorpadi Railway Station (<11km), Ghropuri Railway Station (<11km), Kharadi Bus Stand (<3km), Nei Bus Stop (<4km), Anand Park Bus Stop (<5km), Bus Stop (<6km)

Markets & Shopping Malls

Market Bazar (<2km), Almonte Shopping Mall (<4km), Garje Market (<4km), House Full Shopping Centre (<4km), Chandan Shopping Centre (<4km), Inorbit Mall (<6km)

Banks & ATMs

Pune Merchant Co-Operative Bank (... State Bank Of India (<4km), Pune Jila Madhyawarti Sahakari Bank.. Jijamata Sahakari Bank Ltd (<4km), Rupee Co-Operative Bank Ltd (<4km.. Pune Cantonement Bank (<5km), Suvarnayuga Sahkari Bank (<6km), Maharashtra Bank (<6km), Suwarn Yug Sahakari Bank (<6km)

Restaurants & Clubs

Sagar Int Restaurant (<3km), Nisarg Restaurant (<3km), Le Sarah-I Family Resturant (<3km), Nisarga Restaurant (<3km), Relax Restaurant (<5km), Relax Garden Restaurant (<5km), Dinesh Restaurant (<5km), Sahara Restaurant And Bar (<6km), Ganga Retreat Club (<1km), Anup Mali - The Blacklist Club Mans... Lonkar Talim Club (<6km)

Hotels & Guest Houses

Dandekar House-Bimal Paying Guest... Hotel Cozy Inn Guest House (<10km), Sagar Hotel - Ajay (<3km), Hotel Satkar (<3km), Subhash Hotel (<3km), Hotel Radisson (<3km), Datta Hotel (<4km), Hotel Prachi (<4km), Hotel Munnaj (<4km), Reddys Hotel (<4km), Hotel Sarvodaya (<5km), Hotel Tiranga (<5km)

Movie Halls

Jayesh Mini Theatre (<5km)

Hospitals & Clinics

Shree Balaji Hospital (<3km), Kamath Orthopaedic Hospital (<3km.. K K Hospital (<3km), Narwade Maternity Or General Hosp... Rakshak Hospital (<3km), Betal Hospital (<4km), Ajay Hospital (<4km), Prathamesh Hospital (<4km), Tiwana Hospital (<4km), Shri Samarth Hospital (<4km), Mamata Clinic (<4km), Patole Clinic (<4km), Saraswati Dental Clinic (<4km), Krishna Clinic - Dr Aarti Thakur (<6km Clinics (<6km), Renuka Clinic (<6km), Atharva Clinic (<6km), Dr.Mathesul Dental Clinic...Ph 932502.. Prakash Clinic (<6km)

Parks

Exl Express And Cargo (<2km), Sai Satyam Park (<3km), E-Park (<3km), Simran Park Society (<5km), Laxmi Park (<5km), Goodwill Vrundavan (<5km), Anand Park Bus Stop (<5km), Kolte Patil -It Park (<5km), Mahesh Park (<6km), Karan Park (<6km)

Offices

My Office (<3km), Ajay Office (<4km), Shivsena (<5km), Dwarka Garden Mangal Office (<5km.. Post Office (<5km), Grampanchayat Office (<5km), Lic Office (<5km), E Space Offices (<5km), Cherishs Old Office (<6km)

Schools & Colleges

Nirmala Convent School (<2km), Nirmala Convent School (<3km), City International School (<3km), Salunke Motor Driving School (<3km.. Jijeshs School (<4km), 9brd Kv3 (<4km), Kendriya Vidyalaya - 9brd School Cam Old Kv3 School (<4km), Air Force School (<4km), Sundarabai Marathi School (<5km), Kharadi Law And D Ed College (<3km. V S Satav Jr. College (<4km), G.H.Raisoni College Of Engg And Mg.. Parvatibai Genba Moze College Of En.. G.H Raisoni College Of Engg And Ma.. Lonkar High School And Junior Colle..

* All distances are approximate

Properties

Type	Area	Possession	Price *
3BHK Apartment / Flat	2285 SqFeet	-	₹ 1.29 crore
3BHK Apartment / Flat	2910 SqFeet	-	₹ 1.57 crore
3 Bedroom Independent House	1980 SqFeet	-	₹ 2.22 crores
4 Bedroom Independent House	3500 SqFeet	-	₹ 1.7 crore
4 Bedroom Independent House	3707 SqFeet	-	₹ 4 crores

* Data has been collected from publicly available sources and may not be up to date.

Gera's GreensVille SkyVillas News

Expert Reviews on Gera's GreensVille SkyVillas

Explore

[Projects in Pune](#)

[Brokers in Pune](#)

More Information

Report a problem with this listing

Is any information on this page outdated or incorrect?

[Report it!](#)

Disclaimer: All information is provided by builders, advertisers, or collected from publicly available sources and may not be verified as per RERA guidelines. Any information provided on this website, including facts and figures, should be verified independently before entering into any transaction. PropertyWala.com is only an advertising platform to help connect buyers and sellers and is not a party to any transaction, nor shall be responsible or liable to resolve any disputes between them.

[PropertyWala.com](#) » [Pune Real Estate](#) » [Projects in Pune](#) » [Gera's GreensVille SkyVillas - Kharadi, Pune](#)