

1 Bedroom Apartment / Flat for rent in Jigani, Bangalore

6,000



Spacious Hall Kitchen Is Available In A Modern Row House With Covered Parking And A Garden-Facing

150, S2 Homes Butterfly Garden, Vadermanchanahalli, Bu.

- Area: 400 SqFeet ▼
- Bedrooms: One
- Bathrooms: One
- Floor: First
- Total Floors: Two
- Facing: East
- Furnished: Unfurnished
- Monthly Rent: 6,000
- Rate: 15 per SqFeet +5%
- Age Of Construction: 2 Years
- Available: Immediate/Ready to move

Advertiser Details

Ramesh Kumar
Software Professional

Wakad, Pune
mob: 7022866421
tel: 9922700375
mail:
www.propertywala.com/U946539641



Scan QR code to get the contact info on your mobile

Description

Spacious Hall Kitchen is available in a modern row house with covered parking and a garden-facing house in a gated community with 24-hour water availability.

Please mention that you saw this ad on PropertyWala.com when you call.

Features

General

- High Speed Internet

Interior

- Granite Flooring
- Feng Shui / Vaastu Compliant

Recreation

- Park

Lot

- Park Facing

Exterior

- Reserved Parking
- Visitor Parking

Maintenance

- Water Supply / Storage
- Boring / Tube-well
- Rain Water Harvesting

Location

* Location may be approximate

Landmarks

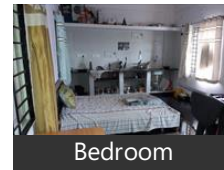
Hospitals & Clinics

Shri Vinayaka Clinic (<1km), Icmr Centre for Advanced Research i... Arogyadhama (<1km), Shri Vinayaka Healthcare (<1km), Guru Clinic (<1km), Anvesana Research Laboratory (<1km, Shri Shanteshwari Clinic (<2km), Surabhi Ayurveda & Naturopathy (<... Techno Vision Industries (<2km), Peenya Industrial Glasses (<2km), Primary Health Center (<2km), Y. K. Hospital-ER (<3km), Y. K. Hospital (<3km), Lenskart (<3km), Kottakkal Arya Vaidya Sala (<3km), Prasad Dental Clinic (<3km), Om Sai Opticals (<3km), Ace Suhas Hospital-ER (<3km), Ace Suhas Hospital (<3km), Spec, Matha Clinic (<3km), Vijayashree Multi Specialty Hospital-... Vijayashree Multi Specialty Hospital (. Primary Health Centre (<3km), Primary Health Centre-ER (<3km)

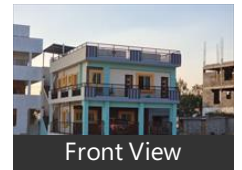
Restaurant & Shops

Salasar Traders (<1km), Sonaxee Fashions (<1km), Orbit Fashion Mens Wear (<1km), Shiv Fashion (<1km), Laguna Clothing (<1km), Durga Fashion (<2km), J H R Enterprises (<3km), Radha Krishna Provision Store (<3km.. Ruchika Provision Store (<3km), Lisha Boutique (<3km), Balaxo (<3km), Shri Ramanjaneya Traders (<3km), A2Z (<3km), SLM Daily Fresh (<3km), Shwetha Boutique (<3km), Shri Suvarnamukhi Enterprises (<3km), Abhinaya Dresses and Fancy Stores (... Haragadde Sarkari Nyayabele Angad... Varsha Enterprises (<3km), Nakshatra Fancy Costume (<3km), Jagadhamba Bandara (<3km), Shri Sai Fashions (<3km), D Ramp for Men (<3km), S. P. S. Traders (<3km), D Ramp (<3km), Shri Sharada Provision Store (<3km),

Pictures



Bedroom



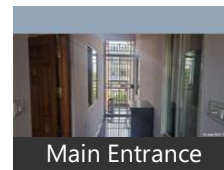
Front View



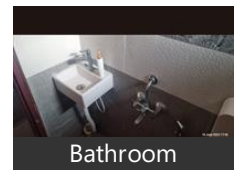
Parking



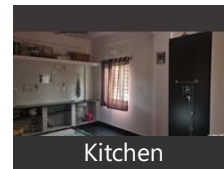
Gallery



Main Entrance



Bathroom



Kitchen

Shri Manjunath Provision Store (<3km), Kolkata Kids Wear Bazaar (<3km), Shri Sharada Enterprises (<3km), Deepu Footwear (<3km), Dhanalaxmi Trades (<3km), Gurudev Collection (<3km), Mathaji Traders (<3km), Naresh Provision Store (<3km), 7 Hills Sarees & Readymades (<3km), Sangita Fashion (<3km), Brand Collection (<3km), Shri Shyam Provision Store (<3km), Sandeep Provision Stores (<3km), Jai Ambeshwar Footwear (<3km)

ATM/Bank/Evchanna

[more...](#)

Locality Reviews

Jigani, Bangalore

Jigani is a industrial town of karnataka. And near to all iits, and hospitals, well known schools, colleges, and bus connecting to all the parts of bangalore,

Pros:

- WATER SOURCE IS GOOD

Cons:

- still developing

Posted: May 22, 2017 by [Nanda kumar \(Aashrithaa Property\)](#)

Jigani is located in South Bangalore and has shown tremendous improvement in recent times. Located along the State Highway 87 and National Highway 7, Jigani is situated near important hubs in Bangalore such as, Bannerghatta, Electronic city and Bommasandra. The growth of infrastructure has also been commendable in this area. Despite the higher growth witnessed in this area, prices are still comparatively lower than other parts of Bangalore, indicating further potential for growth. This can therefore be a good area for land investment for investors, keeping in mind proximity to important locations, good infrastructure and relatively lower current prices & proposed developments around.

Pros:

- Near to Ring Road
- Well Planned Area
- Good connectivity

Posted: Aug 12, 2015 by [Kiran dinnimidi \(Ggr Housing India\)](#)

Jigani is best location to live with Family, lot of company, school near by area. IIM second campus is here.

Pros:

- Well Planned Area
- Well connectivity to all Bangalore and Hosur

Posted: Jan 6, 2015 by Arun Mishra

Jigani is a potential area for property buyers, and growing day by day. There are lot of factories in this area and a lot of people need to travel long distance to reach here. It is well connected with good hospitals and schools, colleges and of course to Electronic City.

Pros:

- Well connected Area
- A lot of property developers

Cons:

- It will take more time to see real developement

Posted: Oct 4, 2014 by Mervyn Fernandes

Good Time to Purchase In This Location.....He is giving you very Good Relaxation of Mind. Nearer to Nature.

Pros:

- Very Good Location

Cons:

- away from city

Posted: Mar 9, 2014 by Donald Menezes

Jigani, Bangalore is rated 7 out of 10 based on 5 user reviews.

Disclaimer: The reviews are opinions of PropertyWala.com members, and not of PropertyWala.com.

Explore

[Similar Properties](#)

[Properties in Jigani, Bangalore](#)

[Projects in Bangalore](#)

[Brokers in Bangalore](#)

More Information

Report a problem with this listing

Is this property no longer available or has incorrect information?

[Report it!](#)

Disclaimer: All information is provided by advertisers and should be verified independently before entering into any transaction. You may visit the relevant RERA website of your state to verify the details of this property. PropertyWala.com is only an advertising platform to help connect buyers and sellers and is not a party to any transactions, nor shall be responsible or liable to resolve any disputes between them.