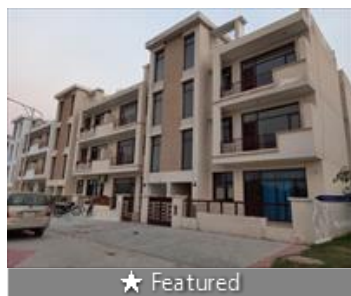


3 Bedroom Apartment / Flat for sale in TDI Sapphire Homes, Sector 110, .. 54.19 lakhs



TDI Sapphire Homes Independent Builder Floor In Mohali

Sector 110 Mohali, Sector 110, Mohali - 140307 (Chandig.

- Project/Society: [TDI Sapphire Homes](#)
- Area: 1270 SqFeet ▾
- Bedrooms: Three
- Bathrooms: Three
- Floor: Ground
- Total Floors: Three
- Facing: East
- Furnished: Semi Furnished
- Transaction: New Property
- Price: 5,419,000
- Rate: 4,267 per SqFeet **+25%**
- Age Of Construction: 1 Years
- Possession: Immediate/Ready to move

Advertiser Details

ALEXA Real Estate
Alexan Real Estate
Owner/Proprietor

Sector 119, Mohali
mob: 9888764155
tel: 9569071155
mail: alexan@propertywala.com

www.propertywala.com/alexan-real-estate

Scan QR code to get the contact info on your mobile
[View all properties by Alexan Real Estate](#)

Description

TDI Sapphire Homes, located in Mohali Sector 110, is a independent builder floor. It offers 3bhk in affordable prices. The project is well equipped with all the amenities to facilitate all business needs. Bask in the warmth of nature and take comfort in raising your family in a wholesome neighbourhood. The exclusive Independent Floors offer a unique residential experience to ones who value independence and love to enjoy smart lifestyle in a secure environment. TDI Sapphire Homes project features such as: 24x7 CCTV, Huge Parking, 100% Power Backup, Modern Fire Detection and Exquisite Landscaping.

When you contact, don't forget to mention that you found this ad on PropertyWala.com.

Features

General

- Power Back-up
- Lifts
- High Speed Internet
- Wi-Fi

Lot

- Balcony
- Corner Location

Exterior

- Reserved Parking
- Visitor Parking

Maintenance

- Water Supply / Storage
- RO System
- Water Softner
- Rain Water Harvesting
- Waste Disposal

Security

- Security Guards
- Electronic Security
- Intercom Facility
- Fire Alarm

Interior

- Woodwork
- Modular Kitchen
- Marble Flooring
- Granite Flooring
- Wooden Flooring
- Fly Proofing
- Feng Shui / Vaastu Compliant

Recreation

- Swimming Pool
- Park
- Fitness Centre / GYM
- Club / Community Center

Location

* Location may be approximate

Landmarks

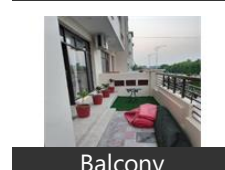
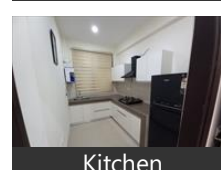
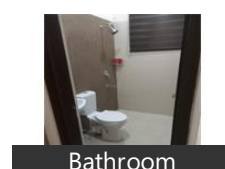
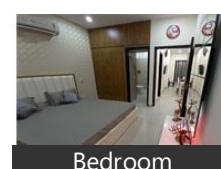
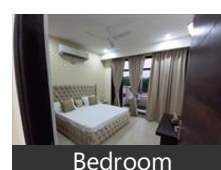
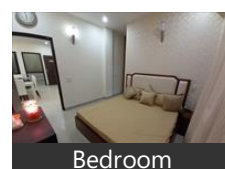
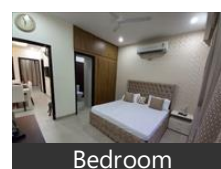
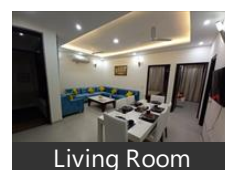
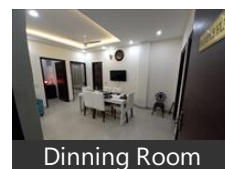
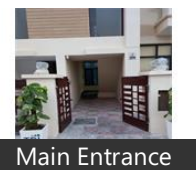
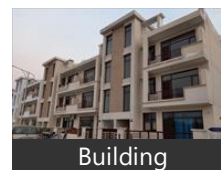
Recreation

Mohali Hills Golf Course Sector 109 (... Marelkotrs Nursery (<1km), Thunder Zone (<4km)

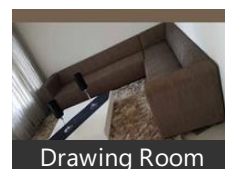
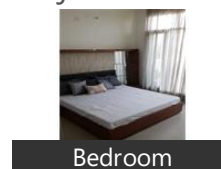
Petrol Station

Bharat Petroleum (<1km), Reliance (<2km)

Pictures



Project Pictures



Hospitals & Clinics

Green Physiotherapy Clinic (<1km), Thakur Clinic (<1km), Dhiman Clinic (<4km), Public Laboratory (<4km), Family Dental Clinic (<4km), Bhardwaj Dental Works (<4km), DR. G. S. Clinic (<4km), Miyan Ji Merath Wale (<4km), Clinic Sambhalki (<4km)

Restaurant & Shops

Maan Karyana Store (<1km), Ashwin Karyana & General Store (<1... General Store (<1km), Puniain General & Gift House (<1km), Sharma Karyana Store (<1km), Deepak Karyana Store (<2km), Chhabra Karyana Store (<2km), Connaught Place (<2km), VS Grocers (<2km), Dudh Utpadakehkari Sabha (<3km), Karyana Store (<3km), Bir Karyana Store (<3km), Roots To Fruits (<3km), Shiv Book Store & stationery (<3km), Indian Western Garments (<3km), Shenty General Store (<3km), Saini Photostat (<4km), Nitish Department Store (<4km), Divyanshi Foot Wear (<4km), Ravi Stationers & Communication (<.. A C Ahaata (<4km), Suvinder General Store (<4km), One Hub (<4km), Ambala Cloth House (<4km), Happy Collection (<4km), Asli Babe di Chah (<4km), Chhabra Provision Store (<4km), Sukhi General Store (<4km), Seerat Boutique & Cloth House (<4k... Raman Karyana Store (<4km), Neha General Store (<4km), Reen Multi Store (<4km), Fashion Point (<4km), Ram Book Center (<4km), Shiv Book Store (<4km), Bheem Tailor (<4km), Ramakant Departmental Store (<4km.. Kaira Readymade Garments (<4km), Jassi Readymade Store (<4km), Harsh Kiryana Store (<4km), Rana Confectionery Shop (<4km), Gurinder Karivana & General Store (<.. Collections (<4km). Bovz Zone (<4km).

[more...](#)

Locality Reviews

Sector 110, Mohali

Well connectivity for Punjab , Himachal , Himachal & Tricity. Tricity tallest tower.

Pros:

- Commercial Zone
- Education Zone
- Hospital Zone

Posted: Aug 16, 2019 by [Pratik Luthra \(Sandwoods Infratech Projects\)](#)

sector 110 of mohali is becoming most profitable area for investors and for end users too Because the kharar banur road is going to built in 4 lane so that this property have excellent location and connectivity

Pros:

- sector 110 will be easy to reach sector in future

Cons:

- its on boundary of mohali and far away from major places of city mohali

Posted: Apr 1, 2017 by [JP Singh \(Crown Real Estate\)](#)

SECTOR 110 strategically located on Landran-Banur Road near Chandigarh Engineering College, Mohali. The city hosts an array of international standard amenities and features that make it a one-of-its-kind township in Mohali.

Pros:

- EXCELLENT LOCATION AND CONNECTIVITY

Cons:

- HIGH TRAFFIC PRESENTLY DUE TO HIGHWAY

Posted: Feb 14, 2014 by [Er. Harjinder Singh \(Safe Homes Real Estate\)](#)

Sector 110, Mohali is rated 7 out of 10 based on 3 user reviews.

Disclaimer: The reviews are opinions of PropertyWala.com members, and not of PropertyWala.com.

Explore

[Similar Properties](#)

[Properties in Sector 110, Mohali](#)

[Projects in Mohali](#)

[Brokers in Mohali](#)

More Information

Disclaimer: All information is provided by advertisers and should be verified independently before entering into any transaction. You may visit the relevant RERA website of your state to verify the details of this property. PropertyWala.com is only an advertising platform to help connect buyers and sellers and is not a party to any transactions, nor shall be responsible or liable to resolve any disputes between them.



Dinning Room



Bathroom



Balcony



Elevation

* These pictures are of the project and might not represent the property

Project Floor Plans



Site Plan



Floor Plan

* These floor plans are of the project and might not represent the property

Report a problem with this listing

Is this property no longer available or has incorrect information?

[Report it!](#)