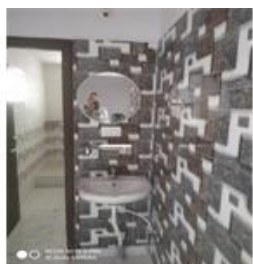


3 Bedroom Apartment / Flat for rent in Ormanjhi, Ranchi

15,000



★ Featured

Independent Flat For Rent.

Ormanjhi, Ranchi, Ormanjhi, Ranchi - 835219 (Jharkhand)

- Area: 1400 SqFeet ▾
- Bedrooms: Three
- Bathrooms: Two
- Floor: First
- Total Floors: Three
- Facing: East
- Furnished: Semi Furnished
- Lease Period: 11 Months
- Monthly Rent: 15,000
- Rate: 11 per SqFeet +55%
- Age Of Construction: 7 Years
- Available: Immediate/Ready to move

Advertiser Details

Aashayana Star Properties
Aashayana Star Properties (Owner Pradip Gupta)
Broker

Hinoo, Ranchi
mob: 7766900394
tel: +91-651-2252423
mail: aashayanaproperties@gmail.com
propertywala.com/aashayana-star-properties

Scan QR code to get the contact info on your mobile
[View all properties by Aashayana Star Properties](#)

Description

location- Ormanjhi, Ranchi
3BHK semi-furnished.
Rent - 15k. (Negotiable)
Bathroom-2
Parking yes

Please mention that you found this ad on PropertyWala.com when you call.

Features

General

- Lifts

Interior

- Modular Kitchen

Lot

- Private Terrace
- Balcony

Maintenance

- Maintenance Staff
- Water Supply / Storage
- Water Softner
- Boring / Tube-well
- Waste Disposal

Location

* Location may be approximate

Landmarks

ATM/Bank/Exchange

Bank of India-Ormanjhi (<0.5km), Indian Overseas Bank-Ormanjhi (<1km), Jharkhand Gramin Bank (<1km), ICICI Bank (<1km), Punjab National Bank-Ormanjhi (<3km), Bank of Baroda (<3km), Indian Overseas Bank (<3km), State Bank of India (<3km), Bank of India (<3km), Punjab National Bank (<3km)

Hospitals & Clinics

Baif Krutrim Garbhadan Kendra (<0.5km), Well Cure Hospital (<1km), Well Cure Hospital-ER (<1km), Giri Seva Sadan (<1km), Synergic Dental Care (<1km), Neha Eye Care (<1km), R. S Diagnostic Center (<1km), DR. Dharmendra Kumar (<1km), Patanjali Arogya Kendra (<1km), Khushi Homeo Clinic (<1km), M. D. L. M. Hospital & Research Cen... Kumar Medical Store (<1km), Dawakhana (<1km), Kumar Singh Hospital-ER (<1km), Kumar Singh Hospital (<1km), Vishwas Clinic (<1km), Deep Medical Store (<1km), Dental Care Clinck (<1km), Prathamik Swasthya Kendra (<1km), Radhika Janch Ghar (<2km), Gramin Swasthya Kendra (<2km), Shri Shri Arogya Kendra (<3km), Acms Hospital (<3km), Acms Hospital-ER (<3km), Third Eye Clinic (<3km), Khushi Homeo Clinic (<4km)

Restaurant & Shops

Nisha Book Depot (<0.5km), S S Mart (<1km), Raja Pan Store (<1km), Dynamic Readymade Collection (<1km), Satisfaction (<1km), Akanksha Garments (<1km), Fashion Hunt (<1km), Sanjay Textiles (<1km), Roshine Foote Wear (<1km), Mahesh Kirana Dukan (<1km), Hind Cloth Store (<1km), Raj Footwear (<1km), Naaz Footwear (<1km), Babita Vastralaya (<1km), R. R. Garments (<1km), Anup Vastralay (<1km),

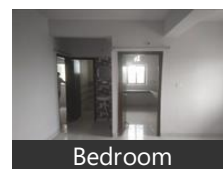
Pictures



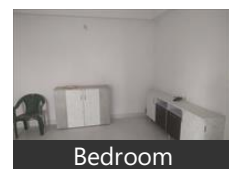
Bathroom



Balcony



Bedroom



Bedroom

Payal Shoe House (<1km), Ayush Shoppe (<1km), Sahu Garment (<1km), Uma Shankar Store (<1km), Ravi Book (<1km), Maa Anpurna Bhandar (<1km), Arun Footwear (<1km), Suman Garments (<1km), Iravi Books (<1km), Mehwish General Store (<1km), Kumar Vastralay (<1km), Saniya Garments (<1km), S. S Book Center (<1km), Agra Shoe Palace (<1km), Anu Cloth Store (<1km), Dilkara Vastralay (<1km), [more...](#)

Locality Reviews

Ormanjhi, Ranchi

Ormanjhi is suburb of Ranchi peaceful and well connected. It is part of Ranchi Municipal Corporation and is developing very fast with 4 lane NH road connecting Ramgarh and Ranchi. There is amusement park, zoo, Engineering college, school, Apollo hospital and shopping complex nearby. the ring road under construction will make the connectivity to Ranchi all the more robust reducing the commuting time to 5-15 minutes drive to any part of Ranchi. a new railway station is also proposed nearby.

Pros:

- Safe Serene locality
- Well connected with all facilities

Cons:

- Distance from Railway Station and airport

Posted: May 18, 2016 by Sweta Upadhayay

A good residential land of 60 acre is available in a well-developed layout at Sikidri bypass express way. The location is ideal with its proximity to Ashok Nagar. The layout has tarred roads; Box type drainage etc. and several houses have been under construction in the layout which has electricity. The layout is fully developed; you can build your dream home and move in immediately. The site is 41x51 and next to the site there is additional 750 sqft land that can be used for garden/parking etc. The documents are clear including khata and tax paid receipts for all years. This land is 20 to 40 minutes from expressway and 8 km from Ormanjhi block. This layout is located strategically close to the city, Situated just 28 km from airport, 26 kms from ranchi railway station and 8kms from nearest bus stand , 10 kms from hospital, 1km from schools, Colleges, Clubs etc., At close proximity. The expected price is 310rs. Per sq. ft. (Front plot)

Pros:

- Fully developed area
- A good residential land
- Easily connected

Posted: Apr 19, 2014 by [Julfan Ansari \(Melody Realtors\)](#)

Ormanjhi, Ranchi is rated 8 out of 10 based on 2 user reviews.

Disclaimer: The reviews are opinions of PropertyWala.com members, and not of PropertyWala.com.

Explore

[Similar Properties](#)

[Properties in Ormanjhi, Ranchi](#)

[Projects in Ranchi](#)

[Brokers in Ranchi](#)

More Information

Report a problem with this listing

Is this property no longer available or has incorrect information?

[Report it!](#)

Disclaimer: All information is provided by advertisers and should be verified independently before entering into any transaction. You may visit the relevant RERA website of your state to verify the details of this property. PropertyWala.com is only an advertising platform to help connect buyers and sellers and is not a party to any transactions, nor shall be responsible or liable to resolve any disputes between them.