

## Nitya Palash Prime - Chandkheda, Ahmedabad



Home... where love resides

Nitya Palash Prime by Nitya Infra at the very prime location of Chandkheda in Ahmedabad offers residential project that host 3 bhk apartments in various sizes.

- Project ID: J455401189
- Builder: Nitya Infra
- Location: Nitya Palash Prime, Chandkheda, Ahmedabad - 382424 (Gujarat)
- Completion Date: Dec, 2022
- Status: Started

### Description

**Nitya Palash Prime** is conveniently situated in the Chandkheda, Ahmedabad and is a project that is well planned. The property comprises of 106 units of 3 bhk apartments which are enclosed within a peaceful environment. The size of apartments may ranges from 1350 to 1600 sqft. The project comprise of various amenities for the residents some of them are CCTV, security, gym etc. The project is in the company of schools, hospitals, shopping destinations, tech parks and every civic amenity required.

#### Amenities :

- 24 Hours Water Supply
- 24 X 7 Security
- Car Parking
- CCTV
- Children's play area
- Gymnasium
- Indoor Games

**Nitya Infra** aims to redefine the real estate industry by developing and delivering state of the art projects. It is committed to providing quality spaces that enrich today and envisage tomorrow. It strives to make its presence felt by developing high-quality projects that provide value for money and the highest customer satisfaction. The company leaves no stone upturned in ensuring that the property-related needs and expectations of the customers are met.

### Features

#### Luxury Features

- Power Back-up ■ Lifts ■ High Speed Internet

#### Lot Features

- Balcony

#### Recreation

- Park ■ Fitness Centre / GYM

#### Security Features

- Security Guards ■ Intercom Facility

#### Exterior Features

- Reserved Parking ■ Visitor Parking

#### Maintenance

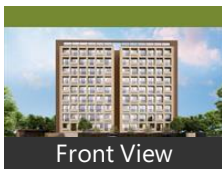
- Maintenance Staff ■ Rain Water Harvesting

### Gallery

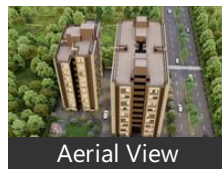
#### Pictures



Front View



Front View



Aerial View

#### Floor Plans



Master Plan



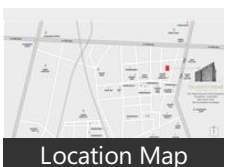
Floor Plan A



Floor Plan B



Floor Plan C



Location Map

## Location

## Landmarks

### Hotel

Hotel Sparsh Inn (<0.5km), Oyo 35512 Hotel LOTUS (<0.5km), Hotel Royal Square by Sky Stays (<1k...  
Radha Hotel (<1km), Hotel Chandra Palace (<1km)

### Petrol Station

Indian Oil Corporation (<0.5km), Indian Oil (<1km)

### Shopping Centre

Sai Sapphire Square (<1km), Apollo Pharmacy (<2km)

### Public Transport

Supath Society (<1km), Dcis BRTS Bus Stop (<1km), Saradan P Ringroad (<1km), Jhunda Bus Stand (<1km)

### Restaurant & Shops

Shri Ugtai General Store (<1km), Balaji Patola Arts (<1km), Haircraft Men Saloon (<1km),  
Bramani General Store (<1km), Jay Chehar Provision Store (<1km), Maheshwari Stationeries Mart (<1km...  
Mahavir Trading (<1km), Sainath Provision Store (<1km), Jay Arbuda Provision Store (<1km),  
Rent And Look (<1km), Bholenath Sales Agency (<1km), Priti Provision (<1km), Akshar Enterprise (<1km),  
Swastik Stationeries (<1km), Sweetu Fashion Point & Gift Articles ... Parmeshwar Super Market (<1km),  
Krishna Provision & Parlour (<1km), Mahalxmi Super Market (<1km), Pavan Traders (<1km),  
Siravi Super Market (<1km), Pandit Dindayal Anaj Bhandar (<2km.. Arbuda Selection (<2km),  
Mahavir Super Market (<2km), Step Up (<2km), Umiya Provision & Dairy Parlour (<2... Uma Institute (<2km),  
Tejas General Stores (<2km), Shri Sundha Provision Stores (<2km), Shri Jalaram Pan Parlour and Provisio..

### Hospitals & Clinics

Devarshi Superspeciality Hospital (<1.. Devasya Hospital (<1km), B K Dental Clinic (<1km),  
Satyamev Hospital (<1km), Satyamev Hospital-ER (<1km), Dentonomics (<1km), New Way Medical (<1km),  
Navjivan Nursing Home (<1km), Ocean Healthcare Service (<1km), Happy Aayurvedic Healthcare (<1km..  
Medbox Doctors (<1km), Eye And You Optics (<1km), Shlok Optic (<1km), Anmol Chikitsalay (<1km),  
Maa Jogni Clinic (<1km), Dr Hemang Shah (<1km), Om Dental Clinic (<1km), Dhanvantari Clinic (<1km),  
Heena Clinic (<1km), Jivandeep Hospital (<1km), Sahara Physiotherapy (<1km),  
Pushp Hospital and Maternity Home... Astha Clinic (<2km), Janani Maternity Home & Women,  
Dental Clinic (<2km), Sopan Pathology Laboratory (<2km), Satyam Hospital (<2km),  
Shraddha Maternity and Sonography..

### ATM/Bank/Exchange

Axis Bank Atm (<1km), Indian Bank (<1km), Indian Bank-Gandhi Nagar Gujarat (<.. State Bank of India (<1km),  
Punjab National Bank-Patiala Tripuri... Bank of Maharashtra-Chandkheda (<.. Adarsh Credit Co Operative Society-C...  
Uco Bank-Chandkheda-Ahmedabad... The Ahmedabad Mercantile Co-op. B. Bank of Maharashtra (<1km),  
Uco Bank (<1km), Indian Bank-Chandkheda Ahmedaba.. Union Bank of India (<1km),  
Union Bank of India-Zundal (<1km), Ahmedabad District Co-op Bank-Ch... Ahmedabad Cooperative Bank (<1km...  
ICICI Bank (<2km), Allahabad Bank-Chandkheda (<2km), Citibank (<2km)

### Recreation

Harimilan Tenements Park (<1km), Bitthal Nagar Park (<1km), Shriji Bungalows Park (<1km)

### Business & Services

Highway Mall (<1km)

### Department Store

J-Mart (<1km), Vraj Parlour (<2km)

\* All distances are approximate

## Properties

## Nitya Palash Prime News

- Singer Palash Sen bids goodbye to his old diesel Toyota Fortuner, complains about NGT rules

*18 days ago* - Palash Sen, the lead singer of Euphoria, has recently expressed his grief in a social media post bidding goodbye to his ten-year-old Toyota Fortuner and complaining about NGT Rules. Palash Sen, the lead singer of the band Euphoria, recently expressed his ... [more](#)

- Delhi Police issues Rs 10,000 fine to multiple DTC and cluster bus drivers for not driving in lane

*18 days ago* - Also read: Singer Palash Sen bids goodbye to his old diesel Toyota Fortuner, complains about NGT rules The second offence will invite prosecution under the Motor Vehicles (MV) Act, the third offence suspension of driving licence and the fourth one leading ... [more](#)

## Expert Reviews on Nitya Palash Prime

### Explore

[Projects in Ahmedabad](#)

[Brokers in Ahmedabad](#)

### More Information

### Report a problem with this listing

Is any information on this page outdated or incorrect?

[Report it!](#)

**Disclaimer:** All information is provided by advertisers, including builders/agents/owners, or collected from publicly available sources and may not be verified under RERA. Any information provided on this website, including facts and figures, should be verified independently, including via the relevant RERA website, before entering into any transaction. PropertyWala.com is only an advertising platform to help connect buyers and sellers and is not a party to any transaction, nor shall be responsible or liable to resolve any disputes between them.

[Home](#) » [Ahmedabad Real Estate](#) » [Projects in Ahmedabad](#) » [Nitya Palash Prime - Chandkheda, Ahmedabad](#)