

Saviour Lord Krishna Mart - Yamuna Expresswa..



commercial shopping mall

Saviour Lord Krishna Mart presented by Saviour Builders Pvt Ltd located at Yamuna Expressway, Greater Noida.

- Project ID: J781189630
- Builder: Saviour Builders Pvt Ltd
- Location: Lord Krishna Mart, Yamuna Expressway, Greater Noida (Uttar Pradesh)
- Completion Date: Sep, 2020
- Status: Started

Description

Saviour Lord Krishna Mart presented by Saviour Builders Pvt Ltd is a beautifully designed convenient shopping center on Yamuna Expressway. The project is an integral part of Gaur Yamuna City township in 250 acres. The project will cater to the commercial requirements of approximate 17000 families expected in the township. The highlight of the project will be the 108 Ft tall statue of Lord Shri Krishna in "Shri Radha Krishna Mandir" which is opposite to the project and attract visitors on Yamuna Expressway.

Features :

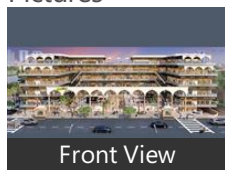
- The project is at an excellent location of yamuna expressway; the next hub of development.
- The project will be an integral part of 250 acres township consisting of approx 10000 plus families.
- The project is surrounded by residential societies, residential villas, school and high-rise commercial.
- The project is opposite to upcoming shri radha krishna temple with the statue of 108 ft lord krishna which will be a landmark on the expressway and attract people visiting to agra, mathura & vrindavan
- High-street retail shops with ample basment parking space.
- The project is conceived keeping in mind the indian cultural elements.
- The project will comprise of both the escalators as well as lifts keeping in mind the upward and downward movement.
- Earthquake resistant building as per norms.
- The project is designed to cater all the basic day to day requirements to exclusive requirements.

About **Saviour Builders** Incorporated in 2006, is actively involved in the real estate industry and engaged in the development of group housing residential projects, townships, and commercial projects. It has maximized its efforts in fulfilling the needs of customers to purchase their dream home. It strives to set new benchmarks in the industry by the construction of small residential buildings as well as multi-dimensional townships.

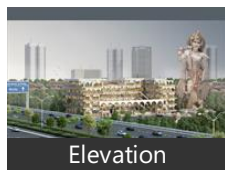
Features

Gallery

Pictures



Front View

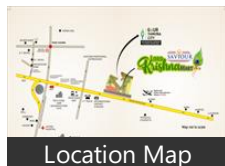


Elevation

Floor Plans



Floor Plan-A



Location Map

Location

Landmarks

ATM/Bank/Exchange

Sarv U. P. Gramin Bank-Dankaur (<8k.. Canara Bank-Dankaur (<5km), Canara Bank-Dungarpur Rilka (<5km... Jila Sahakari Bank-Dankaur (<7km), State Bank of India (<7km), Punjab National Bank-Dankaur (<7km Syndicate Bank-Dankaur (<8km), Bank of Baroda-Dankaur (<8km), HDFC Bank Rabupura (<9km), Punjab National Bank-Rabupura (<9... HDFC Bank (<10km), Dena Bank (<10km)

Hotel

Hummingbird Citrus (<1km)

Building

Gaur Yamuna City (<0.5km), Lake Side Garden Villas (<1km), Cosmic Urban Young (<1km), Shubhkamna Sublime (<2km), Orris Curiosity (<2km), Greenbay (<2km), The Urban Young (<2km), Golf Villas (<2km), Ecnon Kings Court (<2km), Golf Country (<2km), Supertech Golf Villas (<2km), Orris Curio City (<2km), Golf Bay (<2km), Supertech Golf Country (<2km), Fable Castle (<2km), Oasis Grand Stand (<2km), Orris Greenbay Golf Village Plots (<3... Supertech Golf Suites (<3km), Supertech Golf Village (<3km), Boulevard-Entry Gate 2 (<3km), Rudra Skytracks (<3km), Rudra Skywalk (<3km), Jaypee Boulevard Court (<3km), Yamuna Vihar B Block-Entry Gate 2 (... Sunnyvale Homes-Entry Gate 2 (<3km Sunworld Vandita (<3km), Boulevard-Entry Gate 3 (<3km), Boulevard-Entry Gate 1 (<3km), Sunnyvale Homes-Entry Gate 1 (<3km Yamuna Vihar A Block-Entry Gate 2 (... Yamuna Vihar B Block-Entry Gate 1 (... Yamuna Vihar A Block-Entry Gate 1 (... Yamuna Vihar Plots (<4km), LOTUS Parkscape (<4km), LOTUS Greens (<4km), Ajnara London Square (<5km), Ajnara Panorama (<5km), Ajnara R1 (<5km), The Golden Palm Village (<5km), Jaypee Tanishq Square (<6km), Jaypee Greens Country Homes (<6km. Country Homes II-Gate 3 (<7km), Country Homes II-Gate 1 (<7km), Country Homes II-Gate 2 (<7km), Green Crest J Block-Entry Gate 1 (<8k.. Green Crest G Block-Entry Gate 1 (<8.. Green Crest H Block-Entry Gate 2 (<8.. The Kove-Entry Gate (<8km), Jaypee Sports City the Kove (<8km), Jaypee Sports City Kassia (<9km), Green Crest H Block-Entry Gate 1 (<9.. Imperia Mirage (<9km), The Bougainvilleas-Entry Gate 2 (<9k.. Beetle Lap (<9km), The Bougainvilleas-Entry Gate 3 (<9k.. The Bougainvilleas-Entry Gate 1 (<9k... Home and Soul F Premiere (<9km), Taj Greens Residency (<10km), Urbainia Grid1 (<10km), Supertech Upcountry-Gate No 3 (<10..

Petrol Station

Indian Oil (<1km), Reliance (<9km)

Recreation

Park-Boulevard (<3km), Rose Garden (<3km), Park-Sunnyvale Homes (<4km), MSX Mall Greater Noida (<6km), Park-J Block Green Crest (<8km), Park-G Block Green Crest (<8km), Park-H Block Green Crest (<9km), The Bougainvilleas Park-Block GH E ... The Bougainvilleas Park-Block GH C ... Yamuna (<10km)

Restaurant & Shops

Bijendra Communication Reelkha & ... Buddy, Store (<10km), Cafe Buddy

Shopping Centre

Kasana Market-Dankaur (<7km), Biharilal Market-Dankaur (<7km), Main Bazar-Dankaur (<7km), Daya Pradhan Market-Dankor (<8km... Chetram Market-Dankor (<9km)

Hospitals & Clinics

Dr Lal Pathlabs (<7km)

* All distances are approximate

Properties

Saviour Lord Krishna Mart News

Expert Reviews on Saviour Lord Krishna Mart

Explore

[Projects in Greater Noida](#)

[Brokers in Greater Noida](#)

More Information

Report a problem with this listing

Is any information on this page outdated or incorrect?

[Report it!](#)

Disclaimer: All information is provided by advertisers, including builders/agents/owners, or collected from publicly available sources and may not be verified under RERA. Any information provided on this website, including facts and figures, should be verified independently, including via the relevant RERA website, before entering into any transaction. PropertyWala.com is only an advertising platform to help connect buyers and sellers and is not a party to any transaction, nor shall be responsible or liable to resolve any disputes between them.