

2 Bedroom Apartment / Flat for sale in Naupada, Thane

1.5 crore



★ Featured

2BHK For Sale Next To Thane Railway Station

Dada Patil Wadi, Shivaji Nagar, Naupada, Thane - 40060..

- Area: 1150 SqFeet ▼
- Bedrooms: Two
- Bathrooms: Two
- Floor: Fifth
- Total Floors: Seven
- Facing: South
- Furnished: Unfurnished
- Transaction: Resale Property
- Price: 15,000,000
- Rate: 13,043 per SqFeet **-30%**
- Age Of Construction: 1 Years
- Possession: Immediate/Ready to move

Advertiser Details



Rajesh Gadgil
Property Management
Kasarvadavali, Thane

Mob: 9821120390

tel:

mail: manishapropertiee@gmail.com



www.propertywala.com/manisha-properties-pune

Scan QR code to get the contact info on your mobile

[View all properties by Manisha Properties](#)

Description

Looking for a spacious and luxurious apartment in the heart of Thane.

- Look no further! We have the perfect property for you.
- Located in Naupada, this beautiful 2 BHK apartment in the renowned Abhijeet CHS Naupada is now available for sale.
- With a total area of 700 square feet, this unfurnished apartment offers enough space for you to design and decorate it according to your taste and preferences.
- The apartment is situated on the 5th floor of a 7-storey building, providing you with a mesmerizing view of the road.
- The apartment is well-maintained and has never been occupied before, allowing you to move in without having to worry about any wear and tear.
- For your convenience and safety, the apartment comes equipped with essential amenities like power backup, 24x7 security, high-speed elevators, built-in wardrobes, lobby in the building, tiles, service elevators, intercom, security staff, and CCTV security.
- You can enjoy a comfortable and secure living experience with these modern facilities at your disposal. The apartment has 2 spacious bedrooms and 2 well-appointed bathrooms, allowing you to enjoy privacy and comfort.
- The bathrooms are tastefully designed with modern fittings and fixtures.
- In addition to the amenities, the apartment also comes with a designated parking space, ensuring that you never have to struggle to find a parking spot for your vehicle.
- Located in Naupada, you will be in close proximity to all the major markets, schools, hospitals, and other important facilities, making it an ideal location for families and professionals.

Priced at 1.5 Crores, this apartment is a steal deal that offers a modern and luxurious living.

When you call, don't forget to mention that you found this ad on PropertyWala.com.

Location

* Location may be approximate

Landmarks

Nearby Localities

[Gokhale Road](#), [Teen Haath Naka](#), [Panchpakhadi](#), [Thane Belapur Road](#), [Waghle Estate](#), [Wagle Industrial Estate](#), [JK Gram](#), [Subhash Nagar](#), [Kalwa](#), [Kapurbawdi](#)

* All distances are approximate

Locality Reviews

Naupada, Thane

Pictures



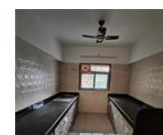
Building elevation



Living Room



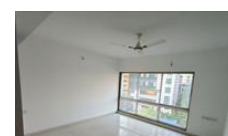
Drawing Room



Kitchen



Bathroom



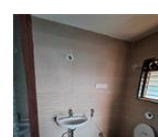
Bedroom



Master Bed Room



Master Bed Room



Attached Toilet

Naupada is located close to thane station and is the commercial heart of thane.It is comparable to VT(CST),Fort,Opera House,Girgaum,Ballardpier to South Bombay is to Thane District,Good civic services,shopping & healthcare facility.Public transport is also easily available

Pros:

- Close to *THANE (W) station*
- *TMT & ST buses available*
- *Plenty of 2 wheeler parking*

Cons:

- *Limited 4 wheeler Parking*

Posted: May 20, 2017 by Jayant Maheshwari

Naupada is the prime locality & heart of Thane and is located near to Thane station, 7mts walking distance from station. All facilities like schools, shops, hospital, market, malls, theater, temple, play ground, police station, transport near to it,

Pros:

- *All facilities near to society.*
- *Near Thane station.*
- *Located in the heart of Thane.*

Cons:

- *Waiting for metro.*

Posted: Mar 29, 2014 by Sanjay Mangaonkar

Naupada is a Commercial business center and it is in the heart of the city.

Pros:

- *It is near to the Station.*
- *Easy rickshaw and bus facility*
- *Cleanness is well maintained in Naupada.*

Cons:

- *No permanent parking for vehicles*

Posted: Feb 22, 2014 by Hilda Dsouza

Naupada, Thane is rated 7 out of 10 based on 3 user reviews.

Disclaimer: The reviews are opinions of PropertyWala.com members, and not of PropertyWala.com.

Explore

[Similar Properties](#)

[Properties in Naupada, Thane](#)

[Projects in Thane](#)

[Brokers in Thane](#)

More Information

Report a problem with this listing

Is this property no longer available or has incorrect information?

[Report it!](#)

Disclaimer: All information is provided by advertisers and should be verified independently before entering into any transaction. You may visit the relevant RERA website of your state to verify the details of this property. PropertyWala.com is only an advertising platform to help connect buyers and sellers and is not a party to any transactions, nor shall be responsible or liable to resolve any disputes between them.