

3 Bedroom Apartment / Flat for sale in Kharadi, Pune

1 - 1.5 crores



3 Bedroom Apartment For Sale In Pune

Kharadi Township, Kharadi, Pune - 411014 (Maharashtra)

- Area: 1229 SqFeet ▼
- Bedrooms: Three
- Bathrooms: Three
- Floor: Seventh
- Total Floors: More than 20
- Facing: East
- Furnished: Unfurnished
- Transaction: New Property
- Price: 1 - 1.5 crores
- Age Of Construction: Under Construction
- Possession: Within 2 Years

Advertiser Details

Manisha Lokhande

Kharadi, Pune
 mob: 9373336258
 tel: 7970820683
 mail:
www.propertywala.com/U31992959

Scan QR code to get the contact info on your mobile

Description

VTP Flamante Pune is a RERA-registered housing society, which means all projects details are also available on state RERA website for end-users and investors. The RERA registration number of this project is P52100051826.

VTP Realty is one of the known real estate brands in Pune. The builder has delivered 25 projects so far. Around 6 projects are upcoming. There are 9 projects of this builder, which are currently under-construction.

Read on to know more about must-know features, VTP Flamante Price List, Photos, Floor Plans, Payment Plans, Brochure download procedure and other exciting facts about the project.

When you contact, don't forget to mention that you found this ad on PropertyWala.com.

Features

General

- Power Back-up
- Centrally Air Conditioned
- Room AC
- Lifts
- High Speed Internet
- Wi-Fi

Lot

- Private Terrace
- Balcony
- Private Garden
- Basement
- Corner Location
- Park Facing

Exterior

- Reserved Parking
- Visitor Parking
- Independent Garage
- Servant Quarter

Maintenance

- Maintenance Staff
- Water Supply / Storage
- RO System
- Water Softner
- Boring / Tube-well
- Rain Water Harvesting
- Waste Disposal

Security

- Security Guards
- Electronic Security
- Intercom Facility
- Fire Alarm

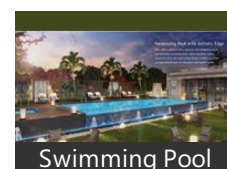
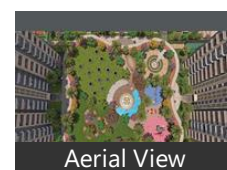
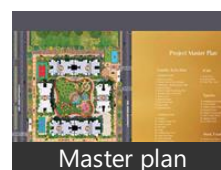
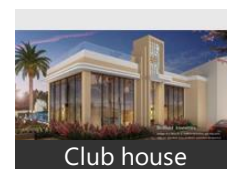
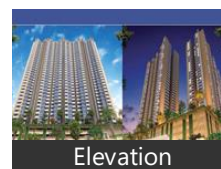
Interior

- Woodwork
- Modular Kitchen
- Marble Flooring
- Granite Flooring
- Wooden Flooring
- Fly Proofing
- Feng Shui / Vaastu Compliant

Recreation

- Swimming Pool
- Park
- Fitness Centre / GYM
- Club / Community Center

Pictures



Location

* Location may be approximate

Landmarks

Nearby Localities

[Maniari](#), [Maniri Budruk](#)

* All distances are approximate

Locality Reviews

One of the promising place to live in. With all the services, malls within 6km radius.

Kharadi, Pune

Pros:

- Easy connectivity

Cons:

- Prices high

Posted: Sep 2, 2020 by Tipsy J

Everything is nearby.
Sophisticated atmosphere.
Hygienic.
All shopping malls,schools, hospitals, gymnasium,etc everything is nearby.

Pros:

- 1) Everything is Nearby.
- 2) Sophisticated atmosphere
- 3) Hygienic

Cons:

- NO CONS

Posted: Aug 9, 2020 by Shubham Kaswa

Kharadi is the latest, rapidly developing IT Hub of Pune. It is centrally located in the heart of the city. With EON IT Park, many world renowned businesses are setting up their offices in this location. Property rates in this location are shooting up fast. It is a sought-after locality for IT brands and residential projects are selling at a rapid pace. Kharadi is the hot location for investments and growing businesses.

Pros:

- Good connectivity, widest roads
- Malls,hospitals, multiplexes, schools in vicinity

Posted: May 15, 2019 by Sneha Bijlani

One of the fastest growing locality of Pune. Great connectivity to airport, railway station and access to Solapur and Ahmednagar highways. Close to shopping malls and movie theaters

Pros:

- Good transport connectivity
- Proximity to offices
- Close to the airport

Cons:

- Prices increasing rapidly

Posted: Feb 11, 2019 by Prabal Deb

Kharadih is one of the fastest growing residential and commercial hubs in Pune. With IT hubs and Commercial Malls, every thing from work to fun is within minutes of reach. Several gated communities and vicinity to airport and areas like Koregaon Park, Kalyani nagar and Viman Nagar are an added advantage.

Pros:

- Nearer to work places like MIDC, WTC
- Several Malls like Seasons Mall, Amonara Mall, Several Hospitals with emergency care units
- Cultural Diversity

Cons:

- The traffic at peak hours is sometimes bad

Posted: Jun 7, 2017 by Abhijit Majumdar

World Trade Center in Kharadi - hub of business in Pune. DP road connecting EON to Wagholi and Surrounding areas.

Pros:

- IT Hub
- International Company Presence
- Well developed Infrastructure

Posted: Jul 17, 2014 by [Jennifer A \(Gulmohar Development\)](#)

Good connectivity to EON IT park, distance is just 3.5 kms, and from Nagar road just a 200 m. Also well connected to Kharadi bypass and Magarpatta city.

Pros:

- Good connectivity to Eon IT park, Kharadi bypass and also Magarpatta city

Posted: May 4, 2013 by [Sagar sudame \(Pristine Group\)](#)

Kharadi, Pune is rated 8 out of 10 based on 7 user reviews.

Disclaimer: The reviews are opinions of PropertyWala.com members, and not of PropertyWala.com.

Explore

[Similar Properties](#)

[Properties in Kharadi, Pune](#)

[Projects in Pune](#)

[Brokers in Pune](#)

More Information

Report a problem with this listing

Is this property no longer available or has incorrect information?

[Report it!](#)

Disclaimer: All information is provided by advertisers and should be verified independently before entering into any transaction. You may visit the relevant RERA website of your state to verify the details of this property. PropertyWala.com is only an advertising platform to help connect buyers and sellers and is not a party to any transactions, nor shall be responsible or liable to resolve any disputes between them.