

## 3 Bedroom Apartment / Flat for sale in Varthur, Bangalore

1.3 crore



### 3 Bedroom Apartment For Sale In Bangalore

DESIRE TREE APARTMENTS, Varthur, Bangalore - 560037..

- Area: 1530 SqFeet ▾
- Bedrooms: Three
- Bathrooms: Three
- Floor: First
- Total Floors: Five
- Facing: North
- Furnished: Unfurnished
- Transaction: New Property
- Price: 13,005,000
- Rate: 8,500 per SqFeet <sup>-5%</sup>
- Age Of Construction: Under Construction
- Possession: Within 1 Year

### Advertiser Details

**Ankitha N**

Thindlu, Bangalore  
mob: 8105646569  
tel:  
mail:  
www.propertywala.com/U346145102

Scan QR code to get the contact info on your mobile

### Description

3 Bedroom Apartment for Sale in Bangalore

When you contact, don't forget to mention that you saw this ad on PropertyWala.com.

### Features

#### General

- Power Back-up
- Lifts

#### Lot

- Private Terrace
- Balcony
- Basement

#### Exterior

- Reserved Parking

#### Maintenance

- Maintenance Staff
- Water Supply / Storage
- Boring / Tube-well

#### Security

- Security Guards

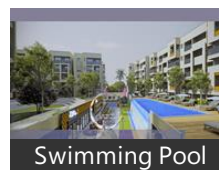
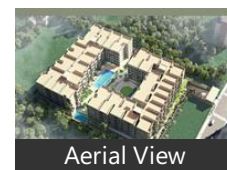
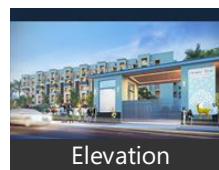
#### Interior

- Feng Shui / Vaastu Compliant

#### Recreation

- Swimming Pool
- Park
- Fitness Centre / GYM
- Club / Community Center

### Pictures



### Location

\* Location is approximate

### Locality Reviews

Varthur, Bangalore

It is a very nice locality that is close to the Star Bazar, Forum Mall, Dmart, International Schools, and Vinayaka Cinemas.

#### Cons:

- full traffic

Posted: Jan 24 by jytohi prasanna

Bank auction property(auction by bank) best location flat available in varthur village

Posted: Aug 12, 2022 by Nehal Gourkar

Varthur is near to many international schools. Accessibility to city. Fastest growing city, green atmosphere, good restaurants within 5 m radius.

#### Pros:

- Good location

Posted: Aug 19, 2015 by Trimurthy

Varthur is very near to Whitefield, Outer ring Road and Sarjapur road, Sarjapur and another route is connected from OuterRing Road, Kadubeesanahalli underpass, Marthahalli towards Panathur and Baligeri.

Another route connected from Varthur is Muthsandra road connecting to Muthsandra village, which is connecting to PERIPHERAL RING ROAD.

Varthur has connectivity to number of International schools like

- 1) Greenwood high school
- 2) Oakridge
- 3) Vagdevi High school

New projects like PRESTIGE LAKE SIDE HABITAT are launched in Varthur main road, the extension of the projects is around 100 acres

A lot of projects are launched in Panathur - Baligeri- varthur road. A connectivity to prestige lake side habitat is also connected from Panathur - Baligeri- varthur road.

Roads of Varthur are very narrow,

**Pros:**

- *Connectivity to number of International schools*
- *Easy accessibility to city*

**Cons:**

- *Very narrow roads*

Posted: Jul 6, 2014 by Phani varma

Varthur is one of the fastest growing residential with good connectivity from Whitefield, Sarjapur road, outer ring road, Wipro corporate office. The accessibility to the above areas makes this area very good residential location.

**Pros:**

- *4km from Whitefield, 6.5 kms from Outer ring road, 8 kms from Wipro corporate office.*

Posted: May 15, 2013 by [Shobha Sudhakar \(Vahe Projects\)](#)

Varthur, Bangalore is rated 7 out of 10 based on 5 user reviews.

Disclaimer: The reviews are opinions of PropertyWala.com members, and not of PropertyWala.com.

Explore

[Similar Properties](#)

[Properties in Varthur, Bangalore](#)

[Projects in Bangalore](#)

[Brokers in Bangalore](#)

More Information

Report a problem with this listing

Is this property no longer available or has incorrect information?

[Report it!](#)

**Disclaimer:** All information is provided by advertisers and should be verified independently before entering into any transaction. You may visit the relevant RERA website of your state to verify the details of this property. PropertyWala.com is only an advertising platform to help connect buyers and sellers and is not a party to any transactions, nor shall be responsible or liable to resolve any disputes between them.