

NCC Urban Misty Woods - Yelahanka, Bangaloo..



The spacious greenery combined with the urban comforts makes it a perfect place

NCC Urban Misty Woods by NCC Urban Infrastructure at Yelahanka in Bangalore offers residential project that host 3 & 4 Bhk apartment in various sizes.

- Project ID: J918960491
- Builder: NCC Urban Infrastructure
- Location: NCC Urban Misty Woods, Yelahanka, Bangalore (Karnataka)
- Completion Date: Dec, 2018
- Status: Completed

Description

NCC Urban Misty Woods, is a sprawling luxury enclave of magnificent Villas in Bangalore, elevating the contemporary lifestyle. The project host 3 bhk and 4 bhk villas in the size ranges in between 3693 to 4683 sqft. The project host lots of amenities like indoor games, landscaped garden etc for giving the residents a comfortable and cozy life. . It is one of the most prestigious address of Bangalore with many facilities and utilities nearby Yelahanka New Town .

Amenities :

- Indoor Games
- Landscaped Garden
- Security
- Parking
- Power Backup

NCC Urban Developers is a subsidiary of Nagarjuna Construction Company Ltd. It develops real estate all over India in cities like Bangalore, Hyderabad, Cochin, Chennai, Goa, Vizag, Ranchi and even in Dubai. NCC Urban Builders has a diverse portfolio with residential and commercial complexes, townships, roads, bridges, pipelines, SEZs and serviced apartment complexes. It has a turnover of around Rs. 3500 crores annually and is widely known for its quality and excellence. Nagarjuna Maple Heights, Nagarjuna Pearl Bay, Nagarjuna Gardens, Nagarjuna Lotus and others are amongst the completed projects by NCC Urban Developers.

Features

Luxury Features

- Power Back-up ■ High Speed Internet

Lot Features

- Balcony

Recreation

- Park

Security Features

- Security Guards

Exterior Features

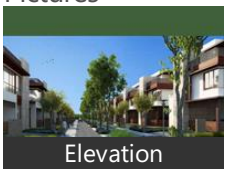
- Reserved Parking

Maintenance

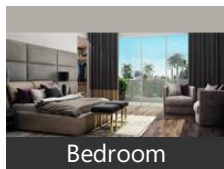
- Maintenance Staff ■ Rain Water Harvesting

Gallery

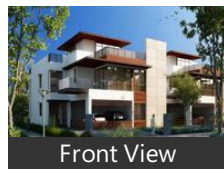
Pictures



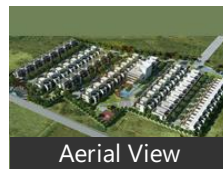
Elevation



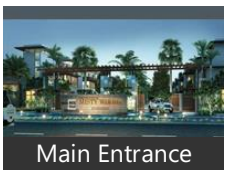
Bedroom



Front View



Aerial View



Main Entrance

Floor Plans



Master Plan



Floor Plan A



Floor Plan B



Floor Plan C



Floor Plan D



Master Plan

Location

Landmarks

Public Transport

Yelahanka Railway Station (<4km), Hebbal (<12km), Hebbal Railway Station (<12km), Bel Circle (<14km), Nagavara (<13km), Yelahanka B M T C Bus Station (<4km. B M T C Bus Station-Yelahanka N E S... Kodigehalli Railway Station (<10km), Nagashettyhalli B M T C Bus Station ... Bmtc Bus Stop-Yelahanka New Town..

Hotel

Royal Orchid Resort & Convention C... Chairman, Ramanashree California Resort-Dodd.. Angsana Oasis Spa & Resort (<12km), The Royale Senate-Hebbal (<13km), Arra Suites (<6km), Liwa Hotel (<7km), Godrej Woodsman Estate (<11km), Maple Inn-Kempapura (<11km), Howard Johnson-Nagavara (<12km), Olde Bangalore Hotel & Resort (<11k.. Country Inn & Suites By Radisson Be... Howard Johnson by Wyndham Beng...

ATM/Bank/Exchange

City Union Bank-Yelahanka New Tow. Canara Bank (<9km), State Bank of India (<11km), State Bank of India-Yelahanka-Gandh. Bank of Baroda-Defence Colony (<10.. Uco Bank (<10km), State Bank of India-Yelahanka New T... ICICI BANK (<5km), Bank Of Maharashtra-Yelahanka (<6...

Building

Adithya Celestial (<0.5km), Orchid Woods (<11km), Sobha Chrysanthemum (<10km), Vivek Marvel (<4km), Krishna Northwoods (<7km), Nagarjuna Meadows Phase-1 (<4km), Vamshi Residency (<5km), SLS Symphony (<9km), Karle Town Centre (<12km), Railway Wheel Factory West Colony ... Prestige Wellington Park (<13km), Kalathoor House (<2km), Kendriya Vihar (<2km), Sobha City ■■■■■■■■■■ (<8km), Arun Patios ■■■■■■■■■■ ... Heritage Estate-Entrance 1 (<4km), Heritage Estate-Main Entrance (<4km. Prestige Monte Carlo (<4km), Heritage Estate-Entrance 2 (<4km), VDB Celadon (<5km), R & S Riviera (<10km), R and S Riviera Bangalore (<10km), Ymr BML Palms (<10km), Eco Narasimha (<14km), Janapriya Heavens (<6km), Sobha Emerald-2 (<6km), Sumukha Paradise (<12km), Purva Venezia (<7km), Supertech Micasa (<7km)

Business & Services

Kirloskar Business Park (<11km), Rail Wheel Factory-Main Gate (<4km.. Sun Pharmaceutical Industries (<4km).

Recreation

Manyata Embassy Business Park (<10.. Decathlon Sports India (<8km), Lumbini Gardens (<12km), PVR Cinemas-MSR Elements Mall (<... Naatyakalakshetra Academy for Fine... BBMP Park-Yelahanka New Town AI... BBMP Park (<6km)

Restaurant & Shops

Five Star Chicken (<2km), Reliance Fresh (<9km), Basaveshwar Bharat Gas Agency-Bha... Mother Dairy-Nandini (<5km), Royal Mart Super Market (<5km), Lulu Value Mart (<11km), Univercell (<6km), Reliance Mobile Store (<6km)

Shopping Centre

Esteem Mall (<11km), MSR Regaliaa Elements Mall (<12km)

Hospitals & Clinics

Yelhanka Govt Hospital (<4km), Columbia Asia Hospital-ER (<11km), DR. Agarwal, I Aim Healthcare Center (<9km), Shushrusha Nursing Home (<3km), Government Public Hospital (<4km), cloudnine clinic (<9km), Dr Lal PathLabs (<10km), Sankalpa E N T Care Centre (<4km), Sham, Kushi Child Care Centre (<6km), Mythyry Polyclinic (<7km)

Hostel

Bmsit Boys Hostel (<7km)

Accommodation

Club Cabana (<11km), Abhyudaya (<10km)

Educational Facility

Vidyashilp Academy (<5km)

Natural or Geographical

Yelahanka 5th Phase Park (<6km), SFS 208 Park (<6km)

Petrol Station

Hindustan Petroleum (<6km)

* All distances are approximate

Properties

NCC Urban Misty Woods News

Expert Reviews on NCC Urban Misty Woods

Explore

[Projects in Bangalore](#)

[Brokers in Bangalore](#)

More Information

Report a problem with this listing

Is any information on this page outdated or incorrect?

[Report it!](#)

Disclaimer: All information is provided by advertisers, including builders/agents/owners, or collected from publicly available sources and may not be verified under RERA. Any information provided on this website, including facts and figures, should be verified independently, including via the relevant RERA website, before entering into any transaction. PropertyWala.com is only an advertising platform to help connect buyers and sellers and is not a party to any transaction, nor shall be responsible or liable to resolve any disputes between them.

[Home](#) » [Bangalore Real Estate](#) » [Projects in Bangalore](#) » [NCC Urban Misty Woods - Yelahanka, Bangalore](#)