

# 1 Bedroom Apartment / Flat for sale in Space India Green Earth Residenc.. 16 lakhs



The Apartment Is 7kms Away From Panvel Railway Station.

Space India Green Earth Residency, Umroli, Panvel-Mathe..

- Project/Society: [Space India Green Earth Residency](#)
- Area: 470 SqFeet ▾
- Bedrooms: One
- Bathrooms: Two
- Floor: Third
- Total Floors: Four
- Furnished: Unfurnished
- Transaction: Resale Property
- Price: 1,600,000
- Rate: 3,404 per SqFeet **-55%**
- Age Of Construction: 10 Years
- Possession: Immediate/Ready to move

## Description

First lets get the fact straight.

I need only genuine buyers to call me directly as i am very busy with my job and don't have time to entertain call center agents. Besides i would not discuss offers on phone unless you come to visit the property.

I live 50 kms way from the property myself so cannot afford a no show from you once we agree to meet. Of course if you don't like the property its you choice and i wont complain

The apartment is 7kms away from Panvel Railway station. It is a co-operative housing society and NOT Gaothan

Ideal as vacation home or for retired people who want to live in a peaceful environment surrounded by real greenery (see pics)

Welcome to your dream apartment in New Panvel, Navi Mumbai! This delightful 1 BHK apartment is situated in a peaceful vicinity, offering a serene and calm atmosphere for you and your family.

- With an affordable price tag of only 16 Lac, this apartment presents a perfect opportunity for both families and bachelors who are looking for a comfortable and beautiful living in a gated society called Space India Green Earth Residency, this apartment provides a safe and secure environment.
- The society offers various amenities, including a well-equipped gymnasium to keep you fit and healthy, dedicated kids play areas for your little ones endless enjoyment, and 24 x 7 security to ensure your waking up to a mesmerizing garden view every morning as this apartment faces the lovely greenery.
- You can start your day with a breath of fresh air and a cup of coffee on your private balcony, connecting you with nature and offering a peaceful apartment is spacious, with an area of 470 square feet, making it ideal for a small family or bachelors in search of comfort and convenience.
- It comes unfurnished, allowing you the freedom to personalize the space according to your taste and , with two bathrooms, there wont be a morning rush and everyone will have their own space.
- The propertys age ranges between 8-10 years, ensuring the buildings durability and longstanding value.
- The apartment is situated on the 3rd floor in a building that has a total of 4 floors.

Although there is no dedicated parking space, ample parking is available for residents and miss out on the opportunity to make this apartment your home.

When you contact, don't forget to mention that you saw this ad on PropertyWala.com.

## Location

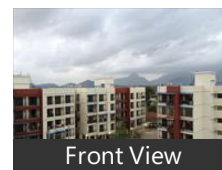
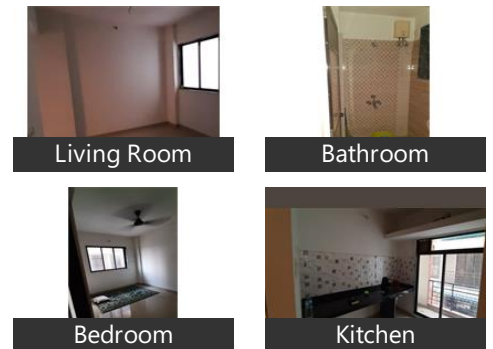
## Advertiser Details

**Vivian Almeida**  
Software Professional

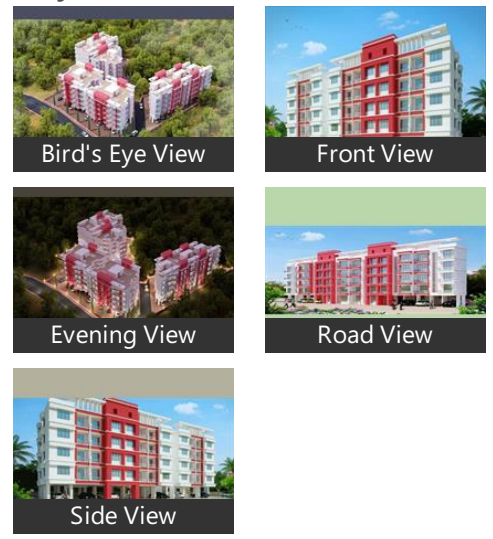
Kasarvadavali, Thane  
mob: 9819868967  
tel:  
mail:  
[www.propertywala.com/U452891647](http://www.propertywala.com/U452891647)

Scan QR code to get the contact info on your mobile

## Pictures

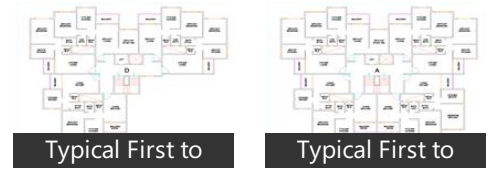


## Project Pictures



\* These pictures are of the project and might not represent the property

## Project Floor Plans



\* Location may be approximate

## Landmarks

### Nearby Localities

[New Panvel Sector-19](#), [New Panvel Sector-1](#), [Panvel](#)

\* All distances are approximate

## Project Reviews

### Space India Green Earth Residency

Space India Green Earth Residency is very close to the sanctioned International Airport in Navi Mumbai. Quality construction and great location ,value for money and good returns. Good amenities and transportation facilities.

#### Pros:

- Close to the International Airport
- Shuttle bus service
- Availability of good shopping centers, stores, cinema halls, schools

Posted: Mar 1, 2015 by [Santosh Shetty \(Spaceindia\)](#)

Space India Green Earth Residency Navi Mumbai is rated 9 out of 10 based on 1 user reviews.

Disclaimer: The reviews are opinions of PropertyWala.com members, and not of PropertyWala.com.

## Explore

[Similar Properties](#)

[Properties in Panvel-Matheran Road area, Navi Mumbai](#)

[Projects in Navi Mumbai](#)

[Brokers in Navi Mumbai](#)

## More Information



Typical First to



Typical First to



Typical First to



Layout Plan

\* These floor plans are of the project and might not represent the property

## Report a problem with this listing

Is this property no longer available or has incorrect information?

[Report it!](#)

**Disclaimer:** All information is provided by advertisers and should be verified independently before entering into any transaction. You may visit the relevant RERA website of your state to verify the details of this property. PropertyWala.com is only an advertising platform to help connect buyers and sellers and is not a party to any transactions, nor shall be responsible or liable to resolve any disputes between them.