

2 Bedroom Apartment / Flat for sale in SBP City Of Dreams, Sector 127, M 55 lakhs



2 Bedroom Apartment For Sale In Mohali
SBP City Of Dreams, Kharar Landra Road, Sector 127, Mo..

- Project/Society: [SBP City Of Dreams](#)
- Area: 1240 SqFeet ▾
- Bedrooms: Two
- Bathrooms: Two
- Floor: Second
- Total Floors: Three
- Facing: East
- Furnished: Semi Furnished
- Transaction: Resale Property
- Price: 5,500,000
- Rate: 4,435 per SqFeet +10%
- Age Of Construction: 1 Years
- Possession: Immediate/Ready to move

Advertiser Details

SBP Group
Om Parkash Jaitly
Sales Executive
Sector 110, Mohali
mob: 8699432528
tel:
mail:
www.propertywala.com/sbp-group

Scan QR code to get the contact info on your mobile
[View all properties by SBP Group](#)

Description

2 Bedroom Apartment for Sale in Mohali

Please mention that you found this ad on PropertyWala.com when you call.

Features

General

- Power Back-up
- Centrally Air Conditioned
- Lifts
- High Speed Internet
- Wi-Fi

Lot

- Private Terrace
- Balcony
- Private Garden
- Basement
- Corner Location
- Park Facing

Exterior

- Reserved Parking
- Visitor Parking
- Independent Garage
- Servant Quarter

Maintenance

- Maintenance Staff
- Water Supply / Storage
- RO System
- Water Softner
- Boring / Tube-well
- Rain Water Harvesting
- Waste Disposal

Location

* Location may be approximate

Landmarks

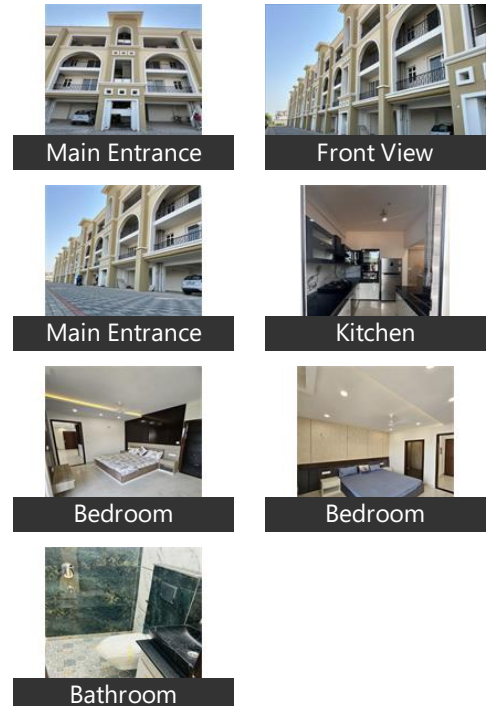
Religious Places

Shiv Mandir (<0.5km), Maa Vaishno Devi Temple (<0.5km), Guga Mari (<1km), Gurudwara Guru Kirpa Saheb (<1km), Guru Har Rai Sahib Ji (<1km), Gurudwara Gurkirpa Sahib (<1km), Sanatan Dharm Mandir (<1km), Ma Vaishno Devi Temple (<1km), Guru Dwara Guru Harkrishan Sahib C.. Gurudwara (<1km)

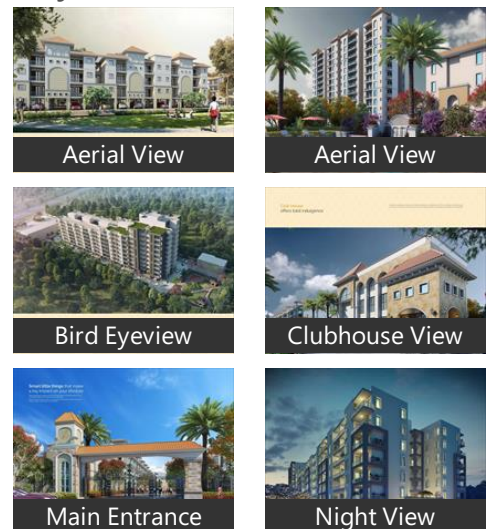
Education

Scholar, Agrimentors Chandigarh (<0.5km), Hitesh Sit Commerce Classes (<0.5km), Bragnam Skill Center (<0.5km), Nancy Beauty Salon and Training Ce... smart Talk - India, Kabalikut Play Way School (<0.5km), School of Cinema (<1km), Strategic Tutorial Home Online Tuiti... Cornerstone Academy-State of Art L...

Pictures



Project Pictures



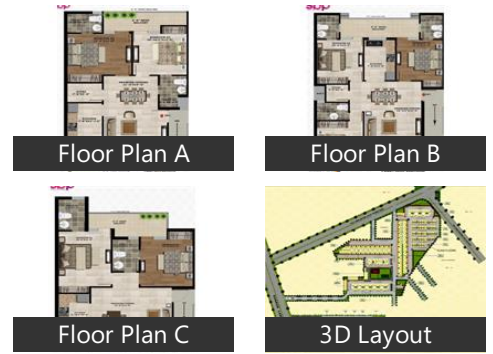
* These pictures are of the project and might not represent the property

Project Floor Plans

Monika Accounts Classes (<1km), The Spanning Kids School (<1km), Child Day Care (<1km), Bank Po Coaching in Chandigarh (<1.. Diamond Public School (<1km), Agri Coaching Chandigarh (<1km), Trusty Coders (<1km), Start smart Tuition Centre (<1km), Garment Palace (<1km), Arnav Coaching Classes (<1km), CPL/Chakravarty, Pratham Science Academy (<1km), Abhyaasm Academy (<1km), The Lexicon School (<1km), King S Fitness & Dance Studio (<1km.. Takshila Education (<1km), Bright Institute Kharar (<1km), Kidzee (<1km), Vision Academy (<1km), Tanishq Tuition Classes (<1km), Bright Institute (<1km), JK International Immigration Services.. Students Destination (<1km)

Restaurants & Cafes

Rutbah Hotel & Restaurant (<0.5km), The Chicken Kitchen (<0.5km), India Cafe (<0.5km), Mohali Rasoi (<0.5km), Snooper (<0.5km), Uncle, Garry Foods (<0.5km), Sherry Fast Food (<0.5km), Royal Food Junction (<0.5km), Kulchewala (<0.5km), Chakh le Rasoi (<1km), Eat and Sip (<1km), Eating Point (<1km), Healthi Diet (<1km), Arun Chinese Fast Food (<1km), The Bravo (<1km), Tiktok Point Fast Food Corner (<1km.. Eating Joint (<1km), Anavrin (<1km), Buddies Budget Cafe (<1km), Amritsari Brothers (<1km), Roll Junction (<1km), Uttkarch Cafe (<1km), Wah li Wah (<1km), Pizza Lover, Tounge Twister (<1km), Venkus Chicken Experience ([more...](#))



Locality Reviews

Sector 127, Mohali

Locality introduction and neighbourhood

Sector-127, a residential locality and the last sector of Mohali, enjoys excellent road connectivity to the rest of the city via Ludhiana Chandigarh State Highway, Landran Road, etc. Mundi Kharar, Chajju Majra Colony, Swaraj Nagar, NRI Enclave and Gulmohar City are the nearest localities to Sector-127. Sector-127 features some under-construction and completed residential projects built by the developers of Shivalik Group, Singla Builders and Promoters, Gillco Valley Builders, etc. Housing options like residential houses, low-rise to mid-rise to multi-storey apartments are available in Sector-127.

Physical infrastructure

Arya College Road, Landran Road, and Ludhiana Chandigarh State Highway connect Sector-127 to the rest of the city. Kharar Railway Station is situated at a range of 3Km which can be reached through Gillco Palms Road. Furthermore, via NH205A, one can reach Shaheed Bhagat Singh International Airport, which is approximately 26Km away.

Social & retail infra

The Spanning Kids School, Gillco International School, Diamond Public School, Little Scholars School, and A.P.J. Public School, are the renowned educational institutes situated in and around Sector-127. Also, a few healthcare centres such as Kaushal Hospital - Orthopedic Doctor, Sharma Multispeciality Hospital, SK Multispeciality Hospital, City Hospital, and Kalra Hospital are located near to Sector-127. Ansal City Centre and VR Punjab are around 4Km away. Also, Phase 5 Market is situated at a distance of 8Km.

Nearby employment hubs

"Sector-127 is situated in Mohali which possess prime companies like Godrej Group, Tata Communications, Punjab Communications Limited, Punjab Tractor Limited (PTL), ICI Paints, and Vodafone, etc. Industrial Area Phase 1 is around 20Km via Shanti Path. Industrial Area Phase 1 possesses a number of manufacturing units of industrial fasteners (nuts, bolts, and screws), paper products and printing, sanitary fittings, etc.Source: Magicbricks Research"

Pros:

- All things are easily available

Cons:

- Little rushy

Posted: May 15, 2021 by [Sahil Dhiman \(Jai Durga Property\)](#)

Key Estate is an accomplished real estate firm deals in "Mohali, locality. Drawing from their years of experience they bring More.

Pros:

- Its Gated and Secure society. And near by all amenities.

Cons:

- No any negative point

Posted: Aug 7, 2020 by [Sonia sohota \(Key Estate\)](#)

This sector is a good habitat. At central Kharar, it is well connected by dual highway roads leading to chandigarh (Ludhiana-Chandigarh) and Ambala (via Landran. It is also central to CGC Landran, Chd University and IIT Ropar. Gillco Valley itself has a good International school and almost 37 school buses of Mohali and Chandigarh pick/ drop students here. Gillco Valey has a decent resident market which is functional almost fulltime (0600hrs to 2300hrs). Hospitals like MAX, Fortis, PGI, Govt hospital are all 5-6 km away.

Pros:

- Low cost
- Gated and secured premises
- Good gentry

Cons:

- Touched by 02 highways
- Flyover is under construction, likely to complete this year.
- Fairly dense population.

Posted: Sep 9, 2019 by Kamaljit Singh

Very clean and nice society. Shops are in complex. Lots of parks. Connected to kharar landran road and near airport road.

Pros:

- Clean
- Lota of parks

Cons:

- None

Posted: Jun 6, 2017 by Kirandeep Singh

Sector 127, Mohali is rated 5 out of 10 based on 4 user reviews.

Disclaimer: The reviews are opinions of PropertyWala.com members, and not of PropertyWala.com.

Project Reviews

SBP City Of Dreams

* These floor plans are of the project and might not represent the property

Its nice township and delivered successfully. All units sold out and family living happily.

Pros:

- *Beauty fully designed township*

Posted: Sep 17, 2020 by Manoj Mathur

Sbp City Of Dreams Mohali is rated 9 out of 10 based on 1 user reviews.

Disclaimer: The reviews are opinions of PropertyWala.com members, and not of PropertyWala.com.

Explore

[Similar Properties](#)

[Properties in Sector 127, Mohali](#)

[Projects in Mohali](#)

[Brokers in Mohali](#)

More Information

Report a problem with this listing

Is this property no longer available or has incorrect information?

[Report it!](#)

Disclaimer: All information is provided by advertisers and should be verified independently before entering into any transaction. You may visit the relevant RERA website of your state to verify the details of this property. PropertyWala.com is only an advertising platform to help connect buyers and sellers and is not a party to any transactions, nor shall be responsible or liable to resolve any disputes between them.