

## 2 Bedroom Apartment / Flat for sale in DSR RR Avenues, Yelahanka, Bang. 1.22 crore



★ Featured

### 2 Bedroom Apartment For Sale In Yelahanka, Bangalore

DSR RR Avenues, Yelahanka, Bangalore - 560064 (Karnat..

- Project/Society: [DSR RR Avenues](#)
- Area: 1315 SqFeet ▾
- Bedrooms: Two
- Bathrooms: Two
- Transaction: New Property
- Price: 12,200,000
- Rate: 9,278 per SqFeet +45%
- Age Of Construction: 1 Years
- Possession: Immediate/Ready to move

### Advertiser Details

**OH Realty**  
Manjunath K  
Agent  
Thanisandra, Bangalore  
mob: 9741137112  
tel: 7349180004  
mail:  
[www.propertywala.com/oh-realty](http://www.propertywala.com/oh-realty)

Scan QR code to get the contact info on your mobile

[View all properties by OH Realty](#)

### Description

**DSR RR Avenues** is located in the heart of Yelahanka , Bangalore North offers 2 BHK apartments with sizes ranging from 1315 sqft. The project is spread over an area of 2.23 acres of land. It consists of 1 building with 13 floors and 212 units to offer. There is sufficient space between buildings and each home is 100% vastu compliant. The project offers spacious interiors and wide balconies with pleasant views.

**RERA ID:** PRM/KA/RERA/1251/472/PR/190809/002785

### Amenities

- Sprawling lawns and landscape exteriors
- Amphitheater
- A distinct,tree-lined pathway leading to the
- Outdoor gym
- Swimming Pool
- Spa
- Children Play Area
- Sand Pit with climbing wall
- Seating steps
- Changing room
- Meditation Hall
- People's plaza
- Wooden deck
- Children's swimming pool
- Entrance plaza
- Multipurpose Hall
- Indoor Games
- Gym

Please mention that you saw this ad on PropertyWala.com when you contact.

### Features

#### General

- Power Back-up
- Centrally Air Conditioned
- Lifts
- High Speed Internet
- Wi-Fi

#### Lot

- Balcony

#### Exterior

- Visitor Parking

#### Maintenance

- Maintenance Staff
- Water Supply / Storage
- Water Softner
- Rain Water Harvesting
- Waste Disposal

### Location

#### Security

- Security Guards
- Electronic Security
- Intercom Facility

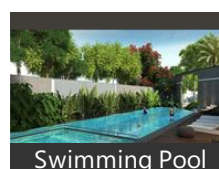
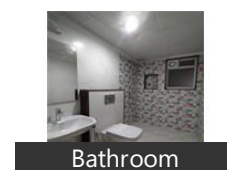
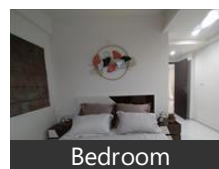
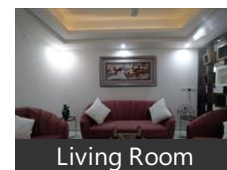
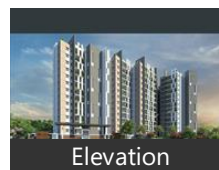
#### Interior

- Woodwork
- Modular Kitchen
- Granite Flooring
- Wooden Flooring
- Feng Shui / Vastu Compliant

#### Recreation

- Swimming Pool
- Park
- Fitness Centre / GYM
- Club / Community Center

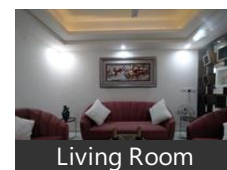
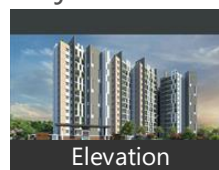
### Pictures

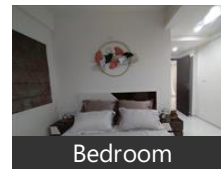


### Floor Plans



### Project Pictures

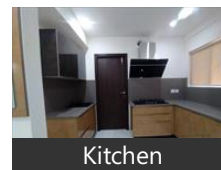




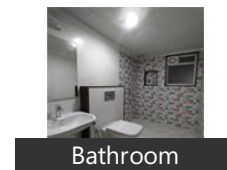
Bedroom



Dinning Room



Kitchen



Bathroom

\* These pictures are of the project and might not represent the property

\* Location may be approximate

## Landmarks

### Restaurant & Shops

N M Fashion (<0.5km), Laxmi Matching Center (<0.5km), Liberty (<0.5km), Black Bird (<0.5km), Venkateswara Provision Store (<0.5km Genx (<0.5km), next (<0.5km), Radha Hi Fashion (<0.5km), Elegant Outfits (<0.5km), Radha Bar & Restaurant (<0.5km), Rajalakshmi Packaging (<0.5km), New Fashion Gents Wear (<0.5km), Batte Mane Cloth Center (<0.5km), Diamond Traders (<0.5km), Sagar Fashion (<0.5km), Sanketh Silk & Sarees (<0.5km), Factory Sale Suits (<0.5km), Shabana Hand Embroidery (<0.5km), Nandi Hi Fashion (<0.5km), Rachana Bar & Restaurant (<0.5km), Mangaldeep Creations (<0.5km), New Cotton Mart (<0.5km), Ashirwas Textiles & Ready Made (<0.5km), Rishab Creations (<0.5km), Shwetha Text Tiles (<0.5km), K G N Mens Wear (<0.5km), ABC Cotton Sales (<0.5km), P. K. Mens Wear (<0.5km), Shyam Deep (<0.5km), Ganesh Textiles (<0.5km), Shri Nidhi Bake & Sweets (<0.5km), Shri Maatha Collections (<0.5km), Gurunatha Provision Store (<0.5km), J P Store (<0.5km), Nataraj (<0.5km), Shri Mathaji Fashion (<0.5km), Vani Silk Saree (<0.5km), Shri Sai Silk Sarees (<0.5km), Puran Collection (<0.5km), Shri Ranga Bar & Restaurant (<0.5km.. City Soles (<0.5km), Kumar Pal Shirts (<0.5km), Eye Siri Clinic & Opticals (<0.5km), Bhavana Fashions (<0.5km), Swagath Textiles (<0.5km), Shri Chowdeshwari Silk Textile House.. Nawaz Hadloom (<0.5km), Kala Mandhir NX (<0.5km), Ashapura Kripa (<0.5km), Shri Ramdev Garments (<0.5km)

### Hospitals & Clinics

Rathna Clinic (<0.5km), Sowmya Dental Clinic (<0.5km), Suraksha Polyclinic (<0.5km), Shri Manjunatha Provision Store (<0.5km Apurva Mother and Child Hospital (<. Apurva Mother and Child Hospital-E... Charma Mattu Gupt Rog Chikitsalay ... Sharadhi Diagnostic Centre (<0.5km), Mathru Maternity & Women Health ... Yashas Polyclinic (<0.5km), Sapthagiri Diagnostics (<0.5km), Lakshmi Diagnostics (<0.5km), Suraksha Polyclinic & Kidney Center... Vadanaa Maxillofacial Multispeciality.. Shiva Naranmuni Medical & General... Veterinary Clinical Service-Veterinary ... Small Animal Clinic (<0.5km), Northside Diagnostic (<0.5km), Indian Medical Association (<0.5km), Government Hospital (<0.5km), Government Hospital-ER (<0.5km), [more...](#)

## Project Floor Plans



Clubhouse Floor



Typical Floor Plan



Floor Plan-A



Floor Plan-B

\* These floor plans are of the project and might not represent the property

## Locality Reviews

Yelahanka, Bangalore

Best place without any traffic, without any noise pollution, air pollution, better living.

### Pros:

- Traffic free

Posted: Oct 20, 2019 by Gopal Y

Lake view apartment as lake is visible from the balcony of the flat. Always breezy requiring no fan! Abundant parking & a secured environment with a beautiful ambience.

### Pros:

- Govt employees campys

### Cons:

- Airport road makes it quite difficult

Posted: Jun 10, 2017 by M Anand

Best place in Bangalore, near to office, best schools, having a malls everywhere.. it's a place for all religions.

### Pros:

- nice houses
- lots of gud people

### Cons:

- traffic

Posted: Apr 17, 2017 by Akash Gowda

Yelahanka is a New Town in which is somewhat developed and is also Being improved.

### Pros:

- New SomerSet Mall nearTraffic Police Station:coming up very soon,
- Sanitary Drainage ,Kaveri water Service in already Completed
- Asphaltalng work is under progress ,completing in about 2-3 months which was damaged sanitary pipelines

### Cons:

- Metro not connected may come later years up to Airport

Posted: Mar 1, 2017 by Bache R

Yelahanka is an upcoming locality and is very well equipped with all necessary amenities

### Pros:

- Well developed with very wide roads
- Closer to New airport
- Nice place to stay with lot of fresh air

### Cons:

- Water supply from BWSSP is not there at some regions
- Far away from Bangalore main marketing areas

Posted: Mar 7, 2016 by K Sarover

Yelahanka is a very good locality with proximity to International Schools, Tech Parks, Highways, International Airport, Good connectivity and less pollution and Traffic.

**Pros:**

- *Good Connectivity to all parts of Bangalore*
- *Less Polution & Less Traffic*
- *Greenary*

Posted: Aug 18, 2015 by Rakesh Kumar

Yelahanka is a good location for students and Govt Employees. Good schools/colleges are nearby. No tension of traffic. Close to International Airport. Good parks nearby.

**Pros:**

- *Good tranposrt facility*
- *Close to International Airport*
- *Nearby railway station*
- *Good schools and colleges nearby.*

Posted: Aug 26, 2013 by Sanjay Joshi

Yelahanka among best places to live in Bangalore.

Pattabhirama Nagar in Jayanagar (ward number 168) and Yelahanka Satellite Town (ward number 4) were rated the best two wards in Bangalore in an assessment by WQS across 23 life indicators, such as water, sanitation, environment, mobility and public amenities. Jayanagar and Yelahanka are the best assembly constituencies by quality of life, taking into account scores of all their constituent wards.

**Pros:**

- *More number of parks, and greenery.*
- *Good educational institutes from Primary to Undergraduate level.*
- *Traffic seems to be okay. But in future it needs to be covered by Namma metro.*

**Cons:**

- *Ground water table in some areas is not good.*

Posted: Jul 2, 2013 by Ravi R

Yelahanka is a great town, close to everything. No water problems. Transportation is great. It is next to Mother Dairy. Schools are excellent.

**Pros:**

- *Polution is very low*
- *Good transport options*

Posted: Jun 8, 2013 by Anand David

Yelahanka is a new Gurgaon for Bangalore. A highest appreciating value of property is seen in this area due to BIAL airport and 4600 acres of SEZ coming with financial city. Aerospace park, IT & Hardware park are very close to Yelahanka and before BIAL airport.

**Pros:**

- *Good place to invest in properties in this area.*
- *Airport, SEZ, Aerospace park, IT & Hardware park nearby*

**Cons:**

- *Late comers will be penalized with higher rates of properties.*

Posted: May 18, 2013 by Aslam Mohammad

Yelahanka, Bangalore is rated 8 out of 10 based on 10 user reviews.

Disclaimer: The reviews are opinions of PropertyWala.com members, and not of PropertyWala.com.

Explore

[Similar Properties](#)

[Properties in Yelahanka, Bangalore](#)

[Projects in Bangalore](#)

[Brokers in Bangalore](#)

More Information

Report a problem with this listing

Is this property no longer available or has incorrect information?

[Report it!](#)

**Disclaimer:** All information is provided by advertisers and should be verified independently before entering into any transaction. You may visit the relevant RERA website of your state to verify the details of this property. PropertyWala.com is only an advertising platform to help connect buyers and sellers and is not a party to any transactions, nor shall be responsible or liable to resolve any disputes between them.