

Bramha Avenue - Kondhwa, Pune



1BHK, 2BHK, 3BHK residential apartments in Kondhwa Khurd, Pune

Bramha Corp presents luxurious 1BHK, 2BHK and 3BHK Residential Apartments in Bramha Avenue at Kondhwa Khurd Pune.

- Project ID : J919052741
- Builder: Bramha Corp
- Properties: Apartments / Flats
- Location: Bramha Avenue, Kondhwa, Pune - 411048 (Maharashtra)
- Completion Date: Dec, 2014
- Status: Started

Description

A leading real estate group of India "**Bramha Corp**" has recently completed its brand new beautiful residential project named "**Bramha Avenue**" in the arm of Kondhwa Khurd, Pune. The project is offering beautiful **1BHK**, **2BHK** and **3BHK** residential apartments in various sizes starting from **636 Sq. Ft** to **1531 Sq. Ft** in very reasonable price that will be easily affordable by you. BramhaCorp Avenue is a wonderful luxury township that strikes a perfect balance in combining natural beauty with the best of man-made comforts along with amenities that could rival any international residential complex. This project is built for those who wish for a little peace & quiet, while still staying in touch with a modern life. You can enjoy the shopping with in a short drive down to MG Road or head for a night - out with your friends at Koregaon Park. You will also find lots of Hospitals, schools, multiplexes & malls are all within reach, so that every aspect of your life is fulfilled at BramhaCorp Avenue.

Location - Kondhwa Khurd Pune

Type - 1BHK, 2BHK and 3BHK Residential Apartments

Size - 636 Sq.Ft to 1531 Sq.Ft.

Price - On Request.

1BHK - 636 Sq.Ft. to 672 Sq. Ft.

2BHK - 1100 Sq.Ft to 1200 Sq.Ft.

3BHK - 1489 Sq.Ft, 1513 Sq.Ft and 1531 Sq.Ft.

Features

- Feng Shui
- Club house
- Maintenance Staff
- Park
- Power Back-up
- Fire Alarm
- Water Storage
- GYM
- Fitness Centre
- Corner Property
- Community Center
- Waste Disposal
- Bank Attached Property
- Vaastu Compliant
- Rain Water Harvesting
- Shopping Centre
- Other Features
- Security

Specifications

- Decorative cornices in POP for ceiling in living & dining
- Internal molded doors with premium quality fittings
- Modular kitchen trolleys with top cabinets
- 24" X 24" vitrified tiles in living, dining, bedrooms & kitchen
- Ceramic tiles in terraces and dry balcony
- Granite door frames for toilets & wooden for bedrooms
- Superior quality acrylic paint for external walls
- Decorative main door with brass fittings
- Earthquake resistance structure
- Dado tiles above granite platform up to kitchen cabinets
- L-shaped granite top kitchen platform with S.S. sink
- Loft in kitchen
- Piped gas connection
- Adequate electrical points
- Exhaust fan
- Provision for inverter

- Water purifier in kitchen
- Premium quality switches
- Superior wall finish with plastic emulsion for internal walls

BramhaCorp is one of the leading diversified business groups head quartered in Pune city today. With a huge turnover of over two thousand crores, its business encompasses real estate development, hospitality, retail as well as leisure. The vision & dynamism of the founders has seen the group making remarkable strides. Our achievement over the last 25 years are landmarks that have set precedents. In 1998, we were the first to bring world class hospitality to Pune city through our prestigious project -Le Meridien-Pune. The Residency Club was the first lifestyle leisure club in Pune. In 2003, we envisioned the first hi-tech 'Bramha SunCity' that has been the benchmark thereafter. The next few years will see the commitment of more than 1000 Crores in building hotels, shopping malls, commercial real estate, upscale residences and lifestyle leisure clubs.

Features

Luxury Features

- Power Back-up ■ Centrally Air Conditioned
- Room AC ■ Lifts ■ RO System ■ Water Softner
- High Speed Internet ■ Wi-Fi

Security Features

- Electronic Security ■ Intercom Facility ■ Fire Alarm

Lot Features

- Private Terrace ■ Balcony ■ Corner Location
- Park Facing

Interior Features

- Woodwork ■ Modular Kitchen
- Feng Shui / Vaastu Compliant

Exterior Features

- Reserved Parking ■ Visitor Parking ■ Servant Quarter
- Basement

Recreation

- Swimming Pool ■ Park ■ Fitness Centre / GYM
- Club / Community Center

Maintenance

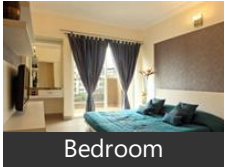
- Maintenance Staff ■ Water Supply / Storage
- Boring / Tube-well ■ Rain Water Harvesting
- Waste Disposal

Commercial Features

- Cafeteria / Food Court ■ Conference room ■ ATM
- Service / Goods Lift ■ High Speed Internet / Wi-Fi

Gallery

Pictures



Bedroom



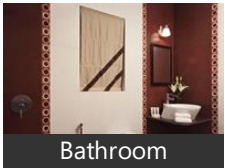
Kitchen



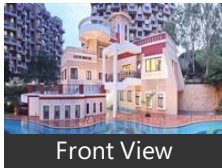
Garden



Drawing Room



Bathroom

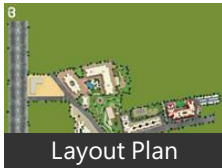


Front View

Floor Plans



Location Map



Layout Plan



1 BHK Floor Plan



2BHK Even Floor



2BHK Odd Floor

Location

Landmarks

Transportation

Hadapsar Gliding Centre (<9km), Hadapsar Airport (<8km), Railway Station Shivaji Nagar (<10km.. Pune Railway Station (<8km), Kothrud Depot (<14km), Swargate ST Stand (<5km), State Transport - Shivajinagar (<10km. Shaniwar Wada Kasaba Peth Police C.. Anand Park (<13km), Lal Maheal Bus Stop (<8km), Sasane Nagar (<7km), Dhayari Maruti Mandir (<12km), Dhayri Gaon (<12km), Taravde Vasti (<6km), Kumar Park (<3km), Sadhu Vaswani Chowk (<7km), Shanivarwada (<8km), Paujai Chowk (<9km), Satav Nagar (<7km), indian taxi app (<17km)

Shopping

iStore (<10km), CoEP Store (<9km), Shoppers Stop (<10km), Ishanya Mall (<12km), Sony Center (<9km), Archies Gallery (<9km), Hotel Park Central (<10km), P.N. Gadgil (<8km), Housefull (<13km), S Mall (<9km), Katraj Dairy (<6km), Westside (<7km), Modular Infotech Private Limited (<5.. City Pride Kothrud (<10km), World of Titan (<9km), Cottonking Pvt Ltd (<9km), New Sujata Cold-drink House (<8km.. Shakti Sports For Winning Moments ... Kayani Bakery (<6km), Pantaloons Store (<12km)

Banks & ATMs

Axis Bank Ltd (<11km), Bharati Vidyapeeth University (<5km), Corporation Bank (<6km), IDBI Bank (<10km), Hongkong and Shanghai Bank Corpo. State Bank Of Hyderabad (<5km), Syndicate Bank (<7km), IDBI (<9km), ICICI Bank (<11km), Bank Of India (<10km), Indian Bank (<11km), Axis Bank Ltd (<5km), State Bank of India (<9km), Bank of Maharashtra (<10km), SBI ATM (<6km), Nabard Bank (<10km), Syndicate Bank (<10km), The Karur Vysya Bank (<11km), IDBI Bank (<6km), Indusind Bank (<5km)

Hotels & Guest Houses

Osho International Meditation Resor... Le Meridien Pune (<8km), The O Hotel (<10km), Hotel Aurora Towers (<9km), The Westin Pune Koregaon Park (<10.. Hotel Sapna (<9km), Bawa Regency (<9km), Beverly Hills (<1km), Hotel Sagar Plaza (<8km), The Pride Hotel (<10km), Hotel Shreyas (<9km), Deccan Rendezvous Hotel (<9km), The Corinthians Resort & Club Pune... Kapila Business Hotel (<9km), Royal Orchid Central (<11km), Seasons Apartment Hotel (<17km), The Ambassador Hotel (<10km), Hotel PARK ORNATE (<11km), The Golden Emerald (<3km), Royal Orchid Golden Suites (<11km)

Education

MIT College of Engineering (<12km), St. Vincent, M.E.S. Abasaheb Garware College (<... Symbiosis Institute Of Computer Stu... Symbiosis Institute of Management S.. Don Bosco High School (<12km), College of Engineering Pune (<9km), The British Council Library (<9km), Sindhu Vidya Bhavan High School (<... Dayanand Public School (<18km), NCL School (<15km), Hutchings High School (<4km), The Bishop, Delhi Public School (<6km), Millennium National School (<12km), Pune Institute of Computer Technolo.. Poona College of Arts Science and C... Brihan Maharashtra College Of Com... Nowrosjee Wadia College (<9km), Vishwakarma Institute of Technology..

Hospitals & Healthcare

Osho International Meditation Resor... Ruby Hall Clinic (<9km), Jehangir Hospital (<8km), Deenanath Mangeshkar Hospital And. The Corinthians Resort & Club Pune... Sancheti Hospital (<9km), Sahyadri Hospital (<9km), Royal Orchid Golden Suites (<11km), Inlaks and Budhrani Hospital (<9km), HV Desai Eye Hospital (<6km), Noble Hospital (<7km), Courtyard by Marriott Pune City Cen... Deendayal Memorial Hospital (<10km NIO (<10km), KEM Hospital (<7km), Bharati Vidyapeeth Dental College (<... Shashwat Hospital (<11km), Healing Hands Clinic (<6km), Oyster & Pearl Hospital (<10km)

Restaurants & Clubs

1000 Oaks (<5km), Leopold Cafe (<9km), The Westin Pune Koregaon Park (<10.. Spice It (<13km), Barbeque Nation (<12km), The Corinthians Resort & Club Pune... Sono & Toscana Restaurant (<11km), Post 91 (<10km), 4 Seasons (<5km), Hidden Place The Hangout (<10km), Royal Orchid Golden Suites (<11km), Mainland China (<12km), Stone Water Grill (<10km), Malaka Spice (<9km), Pizza Hut (<9km), Jyoti Pure Veg Restaurant (<0.5km), Cafe Coffee Day (<9km), Shisha Café (<10km), Subway (<11km), Mocha Cafe (<10km)

Religious Places

Osho International Meditation Resor... Dagdusheth Temple (<7km), St. Patrick, Chaturshringi Temple (<13km), MaNaN Ashram (<15km), Kanifnath Temple (<14km), Parvati Temple (<7km), Omkareshwar Mandir (<9km), Katraj Jain Temple (<7km), ISKCON (<7km), Balaji Mandir & Maruti Mandir (<8km. Jungli Maharaj Mandir (<9km), Don Bosco Church (<12km), Shri Gajanan Maharaj Temple (<6km), Iskcon NVCC (<5km), Sadguru Shankar Maharaj Muth (<5k.. Tambdi Jogeshwari Mandir (<8km), Sarasbaug Ganapati Mandir (<6km), Word of Grace Church (<6km), Church Of Our Lady Of Immaculate ...

Recreation

Raja Dinkar Kelkar Museum (<7km), Race Course (<5km), Jawaharlal Nehru Stadium (<6km), Mariplex Mall (<11km), E-Square (<17km), Alka Theatre (<8km), Joshi, City Pride Kothrud (<10km), Mangala Cinema Hall (<9km), Big Cinema (<8km), Empress Botanical Gardens (<6km), Darshan Museum (<7km), Rahul Cinema (<10km), Saras Baug (<6km), Empress Garden (<6km), Bollywood E Square Multiplex (<12km), Cinemax Multiplex (<14km), Konark Pooram Society (<1km), Fun Time Multiplex (<10km), Chatrapati Sambhaji Park (<9km)

Offices

Pune Passport Office (<11km), PSK Pune (<9km), Pune Municipal Corporation (<9km), Tilak Vidya Pith Post Office (<4km), Passport Office (<11km), R.T.O Office Pune (<9km), Chaturshringi Police Station (<14km.. Global Packways India (<13km), Shivajinagar District Sessions Court (... Shaniwar Peth Police Chowky (<8km.. Khadki Police Station (<14km), Labour OFFICE (<10km), Old City Post Office (<7km), Jai Jawan Society (<3km), Sahakar Nagar Police Chowky (<5km.. Holidaypack Travel & Living Pvt Ltd ... Warjermalwadi Police Station (<13km.. More Vidyalaya Post Office (<11km), Narayan Peth Police Chowky (<8km), Senadatta Police Chowky (<7km)

* All distances are approximate

Properties

Type	Area	Possession	Price *
1BHK Apartment / Flat	625 SqFeet	-	₹ 38.5 lakhs
1BHK Apartment / Flat	653 SqFeet	-	₹ 40 lakhs
2BHK Apartment / Flat	1035 SqFeet	-	₹ 72 lakhs
2BHK Apartment / Flat	1050 SqFeet	-	₹ 58 lakhs
2BHK Apartment / Flat	1106 SqFeet	-	₹ 70 lakhs
2BHK Apartment / Flat	1120 SqFeet	-	₹ 65 lakhs
2BHK Apartment / Flat	1140 SqFeet	-	₹ 72 lakhs
2BHK Apartment / Flat	1150 SqFeet	-	₹ 67 lakhs
2BHK Apartment / Flat	1169 SqFeet	-	₹ 76 lakhs
2BHK Apartment / Flat	1232 SqFeet	-	₹ 66 lakhs
3BHK Apartment / Flat	1422 SqFeet	-	₹ 84 lakhs
3BHK Apartment / Flat	1440 SqFeet	-	₹ 89 lakhs

* Data has been collected from publicly available sources and may not be up to date.

Properties available in 'Bramha Avenue'

2 Bedroom Flat for sale in Bramha Avenue, NIBM Road area.. 75 lakhs



1039 SqFeet Apartment @ Rs.7218/SqFeet

ID: P71147107 — Posted: Jan 31 by Dinesh Singh

2BHK Fully furnished with all hard and soft furnishing ready to move in with just a suit...

2BHK fully furnished property with 2AC, 2 geysers, TV, Fridge, Microwave, Washing Machine, Gas, Sofa, Dining Table with chairs, wooden flooring, fancy lighting, Built in wardrobes and all that needed for modern living. Double covered car park to accommodate 2 vehicles. Ready to move in ... [more details](#)

Bramha Avenue News

Expert Reviews on Bramha Avenue

Explore

[Projects in Pune](#)

[Brokers in Pune](#)

More Information

Report a problem with this listing

Is any information on this page outdated or incorrect?

[Report it!](#)

Disclaimer: All information is provided by builders, advertisers, or collected from publicly available sources and may not be verified as per RERA guidelines. Any information provided on this website, including facts and figures, should be verified independently before entering into any transaction. PropertyWala.com is only an advertising platform to help connect buyers and sellers and is not a party to any transaction, nor shall be responsible or liable to resolve any disputes between them.

[PropertyWala.com](#) » [Pune Real Estate](#) » [Projects in Pune](#) » [Bramha Avenue - Kondhwa, Pune](#)